

iOS mail for  
mobile



# iOS mail for mobile devices

Mail application on iOS

For use by:	Students, Employees
Version:	1.1
Date:	25-07-22
Owner:	SID

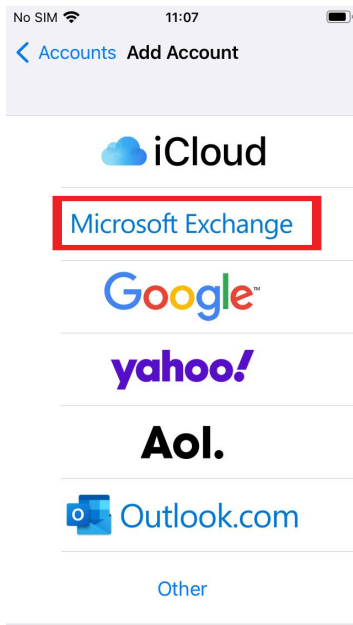
*(this page was intentionally left blank)*

# Configure Exchange Email on iPhone or iPad for Mail in iOS 15.5

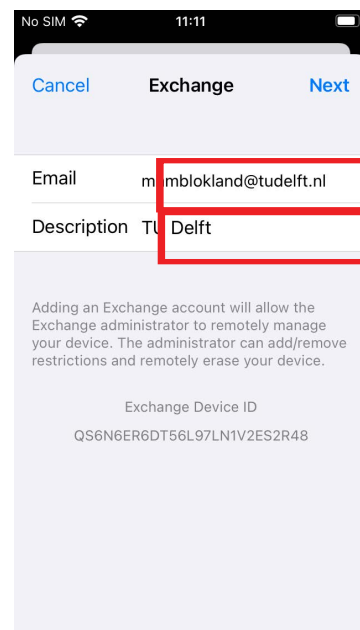
## Before you begin

The following instruction is supported by the TU Delft and has been tested to be working. However, we offer this manual to you as an extra service. In case you have a configuration or version of iOS other than the one described here and you have problems Setting up Exchange Email, neither ICT nor a Servicepoint will be able to help you to Set up Exchange mail.

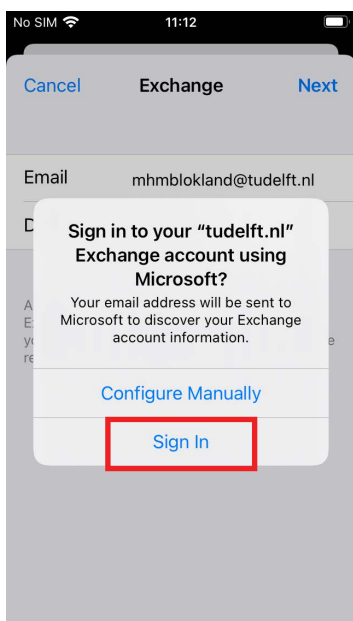
Step 1. Go to the **Settings** app. Tap **Mail**. Tap **Accounts**. Tap **Add Account**. The following screen appears. Select **Microsoft Exchange**.



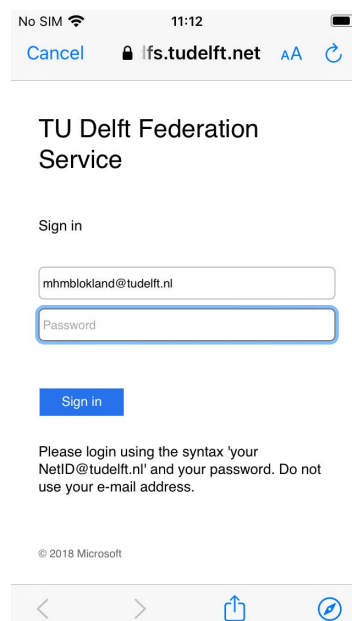
Step 2. Enter your **TU Delft e-mail address** and choose a **Description**. Tap **Next**



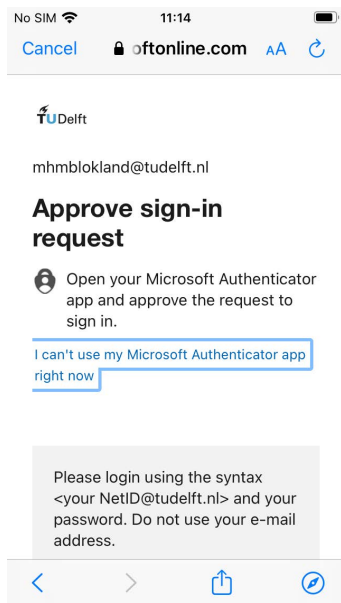
Step 3. Tap **Sign In**



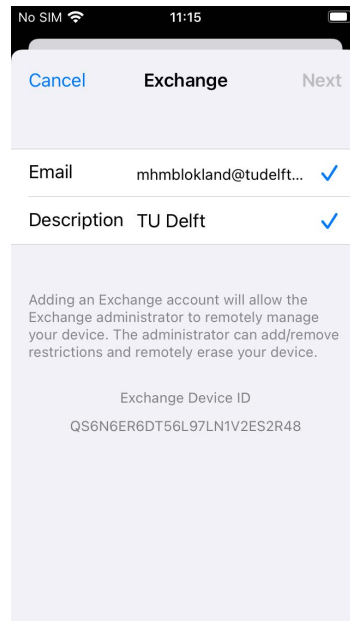
Step 4. Sign in with your **NetID**



### Step 5. Approve sign-in with Authenticator



### Step 6. Info screen that everything is ok.



### Step 7. Select the services you would like to use and tap **Save**. Your selected services will now sync. Note: this may take some time

