

REPORT Open Access TU Delft 2022

Date: 26-4-2023

TU Delft Library - Research Support / Team Analytics

This document reports on the results of the analysis of the Open Access (OA) figures for 2022 for TU Delft.

It consists of three parts. In the first part, the main results are reported. Next, an explanation on the use and content of the accompanying Excel report is given. Finally, the methodology and steps of the analysis are described.

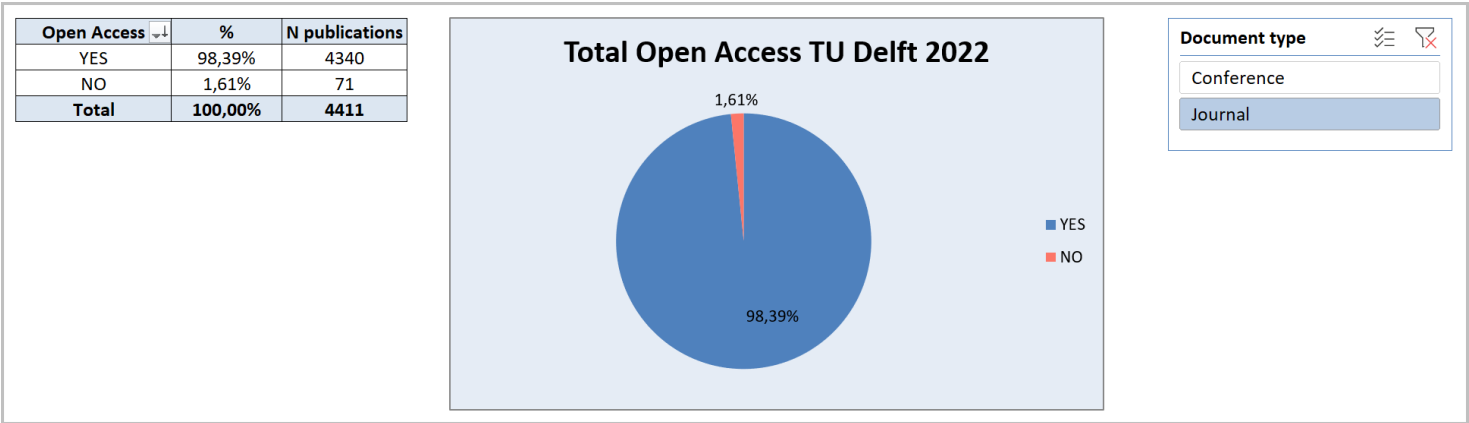
1 MAIN RESULTS

In this chapter the main results are reported.

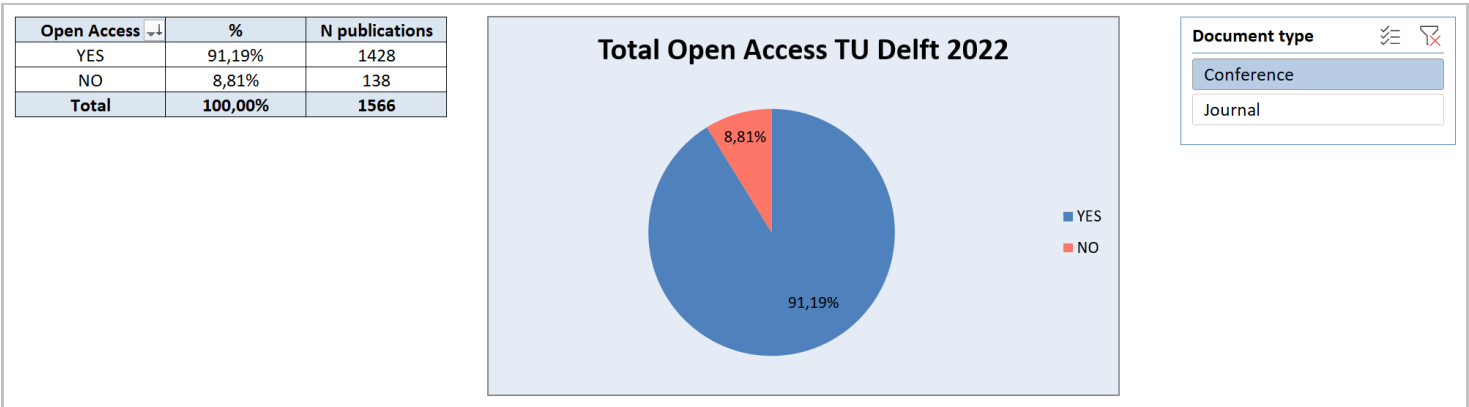
It should be noted that the figures reported here are based on an export from Pure on April 1st, 2023 and that publications have been checked for their Open Access status using several sources and specific criteria (see Chapter 3: methodology).

Some publications that were found to be non-Open Access at the time of this analysis still will become Open Access later on, e.g. after an embargo date has expired. And publications that had neither a valid ISSN nor a valid DOI might end up being classified as non-Open Access, even though they actually could be Open Access. The figures and percentages presented in this report should therefore be considered as the minimum Open Access for TU Delft for 2022.

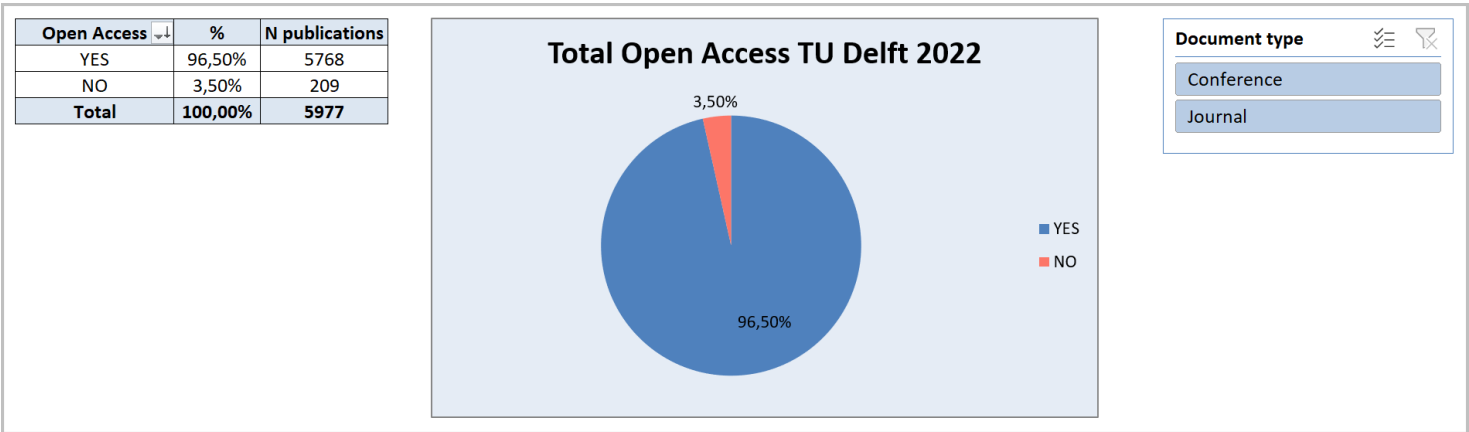
1.1 OA TU Delft Total: Journal articles



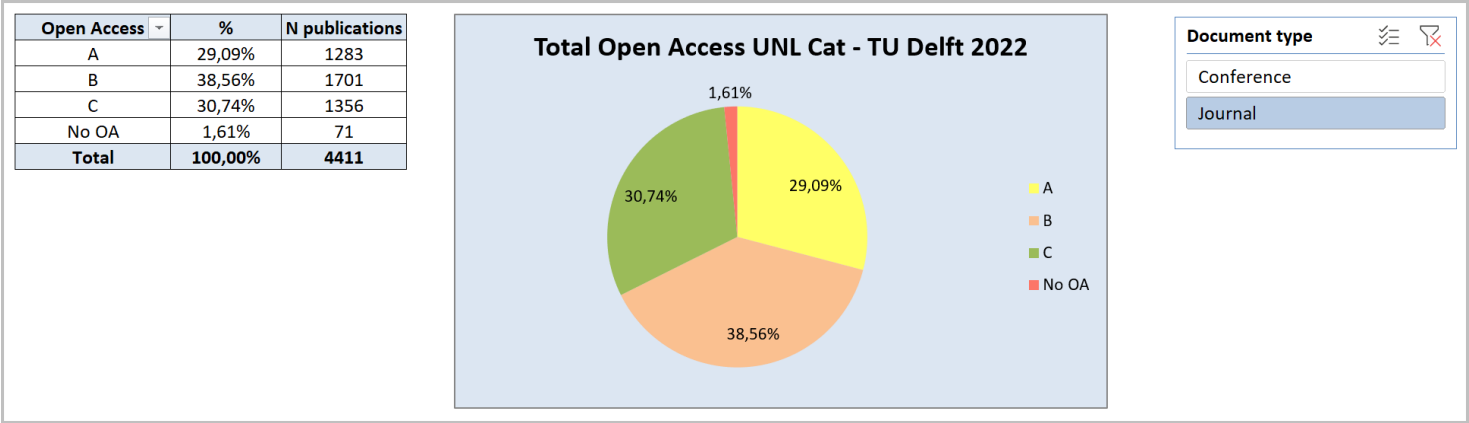
1.2 OA TU Delft Total: Conference proceedings



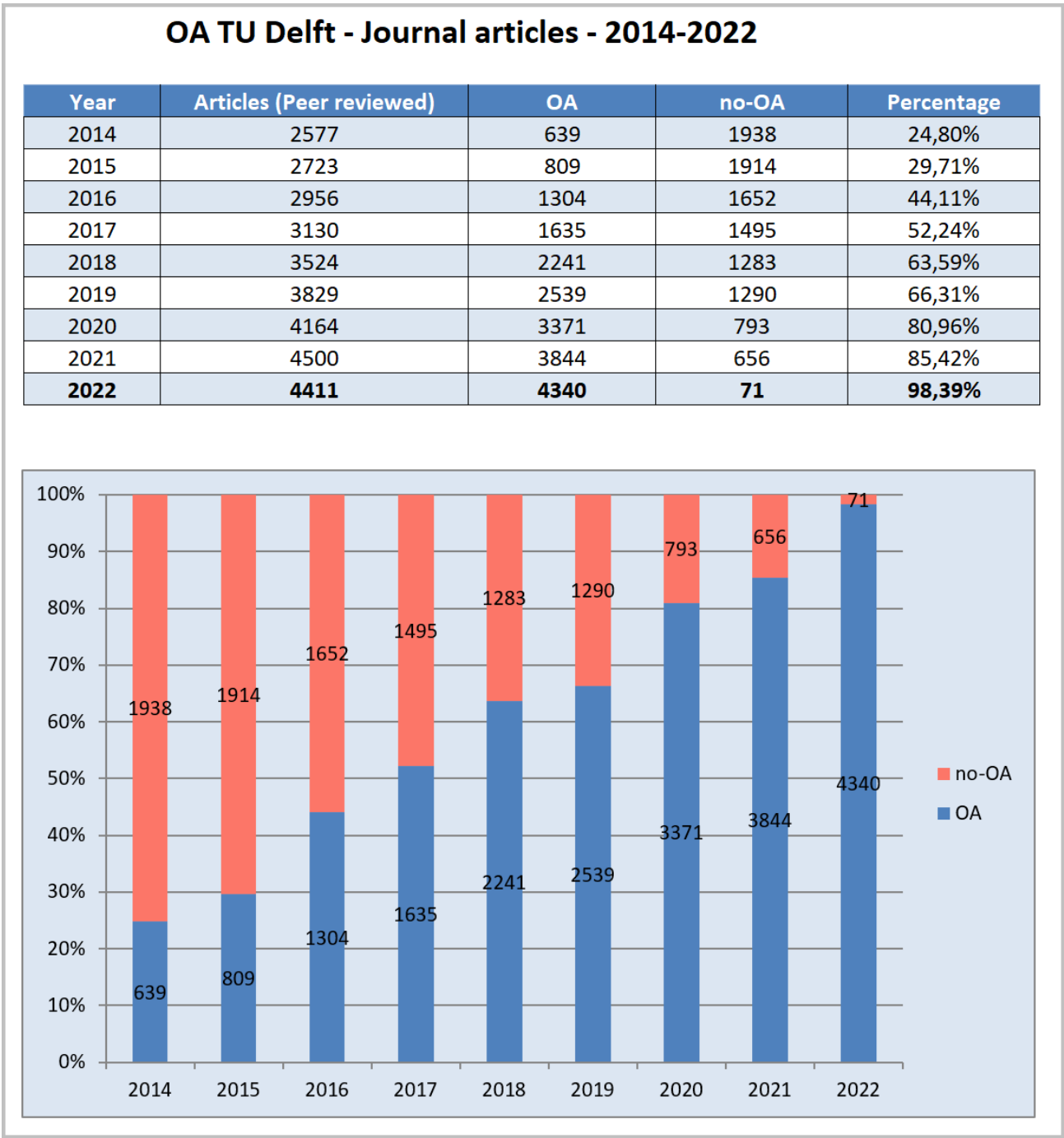
1.3 OA TU Delft Total: Journal articles AND Conference proceedings



1.4 OA TU Delft UNL Categories Total: Journal articles

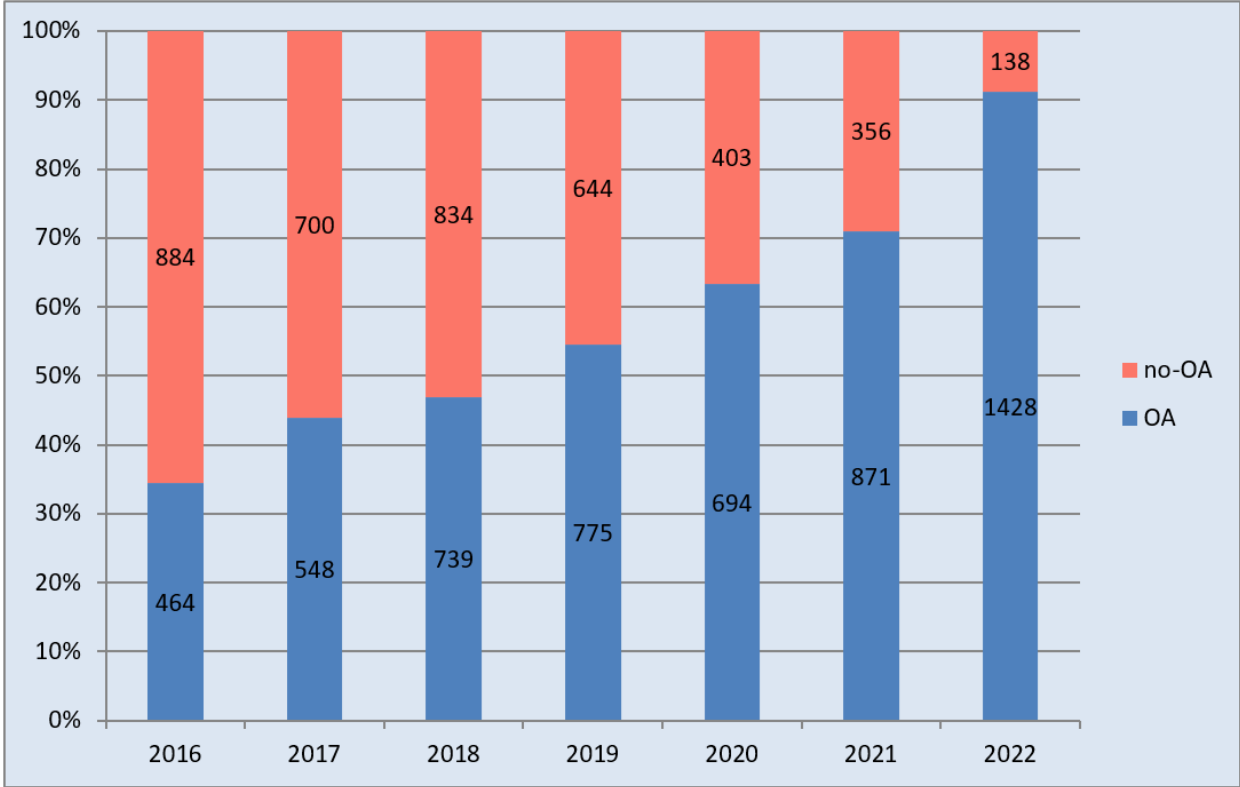


1.5.1 OA TU Delft Journal articles 2014-2022



OA TU Delft - Conference proceedings - 2016-2022

Year	Conference proceedings	OA	no-OA	Percentage
2016	1348	464	884	34,42%
2017	1248	548	700	43,91%
2018	1573	739	834	46,98%
2019	1419	775	644	54,62%
2020	1097	694	403	63,26%
2021	1227	871	356	70,99%
2022	1566	1428	138	91,19%



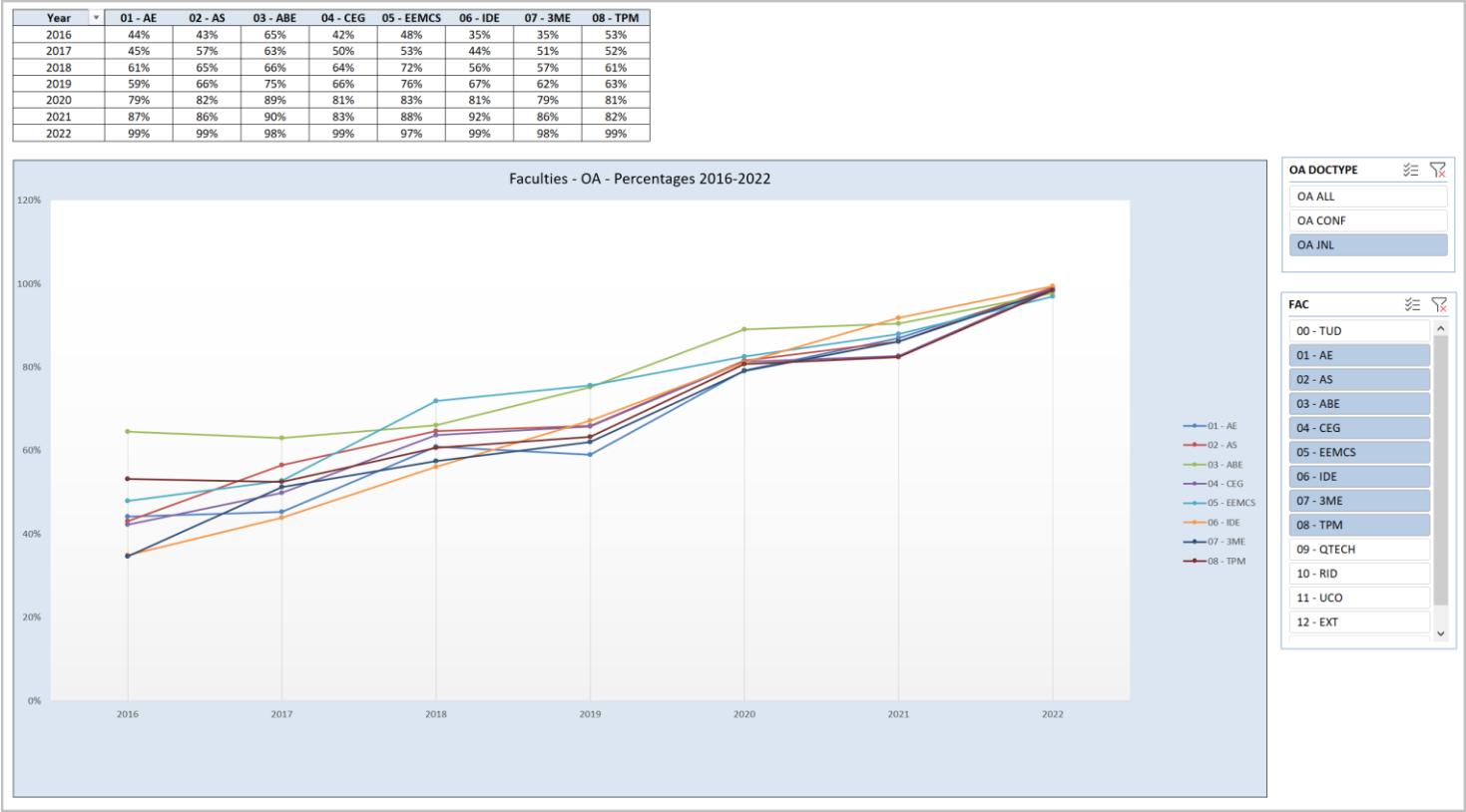
OA TU Delft - Journal articles - 2016-2022 - UNL Categories

Year	A	B	C	No-OA	Total
2016	302	395	607	1652	2956
2017	389	662	584	1495	3130
2018	616	800	825	1283	3524
2019	726	916	897	1290	3829
2020	983	1339	1049	793	4164
2021	1203	1658	983	656	4500
2022	1283	1701	1356	71	4411

Year	A	B	C	No-OA	Total
2016	10,22%	13,36%	20,53%	55,89%	2956
2017	12,43%	21,15%	18,66%	47,76%	3130
2018	17,48%	22,70%	23,41%	36,41%	3524
2019	18,96%	23,92%	23,43%	33,69%	3829
2020	23,61%	32,16%	25,19%	19,04%	4164
2021	26,73%	36,84%	21,84%	14,58%	4500
2022	29,09%	38,56%	30,74%	1,61%	4411



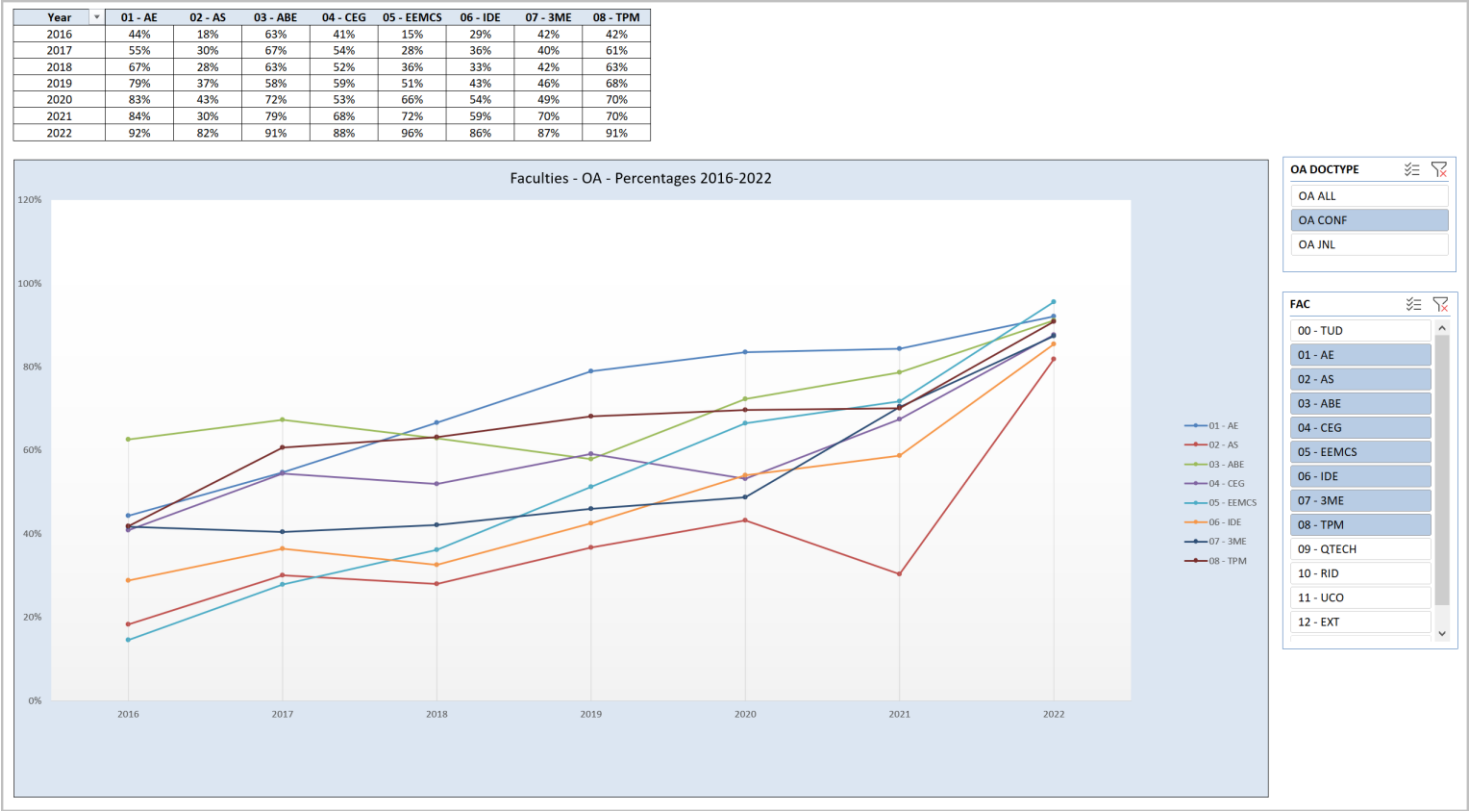
1.7.1 OA Faculties: Journal articles - 2016-2022 - Percentages OA



1.7.2 OA Faculties: Journal articles - 2022 - Percentages and number of publications OA

YEAR	OA DOCTYPE	FAC	A %	B %	C %	No OA%	OA Total %	Total %	A	B	C	No OA	OA Total	Total
2022	OA JNL	00 - TUD	29,09%	38,56%	30,74%	1,61%	98,39%	100,00%	1283	1701	1356	71	4340	4411
2022	OA JNL	01 - AE	25,99%	46,29%	26,49%	1,24%	98,76%	100,00%	105	187	107	5	399	404
2022	OA JNL	02 - AS	30,20%	40,17%	28,79%	0,84%	99,16%	100,00%	215	286	205	6	706	712
2022	OA JNL	03 - ABE	42,07%	39,48%	16,18%	2,27%	97,73%	100,00%	130	122	50	7	302	309
2022	OA JNL	04 - CEG	30,65%	40,14%	28,12%	1,08%	98,92%	100,00%	339	444	311	12	1094	1106
2022	OA JNL	05 - EEMCS	24,85%	30,73%	41,42%	3,00%	97,00%	100,00%	207	256	345	25	808	833
2022	OA JNL	06 - IDE	38,67%	37,02%	23,76%	0,55%	99,45%	100,00%	70	67	43	1	180	181
2022	OA JNL	07 - 3ME	25,89%	40,82%	31,76%	1,53%	98,47%	100,00%	203	320	249	12	772	784
2022	OA JNL	08 - TPM	27,91%	49,03%	21,60%	1,46%	98,54%	100,00%	115	202	89	6	406	412
2022	OA JNL	09 - QTECH	42,53%	21,84%	34,48%	1,15%	98,85%	100,00%	37	19	30	1	86	87
2022	OA JNL	10 - RID	7,69%	73,08%	15,38%	3,85%	96,15%	100,00%	2	19	4	1	25	26
2022	OA JNL	11 - UCO	32,26%	32,26%	29,03%	6,45%	93,55%	100,00%	10	10	9	2	29	31
2022	OA JNL	12 - EXT	0,00%	0,00%	0,00%	0,00%	0,00%	0,00%	0	0	0	0	0	0

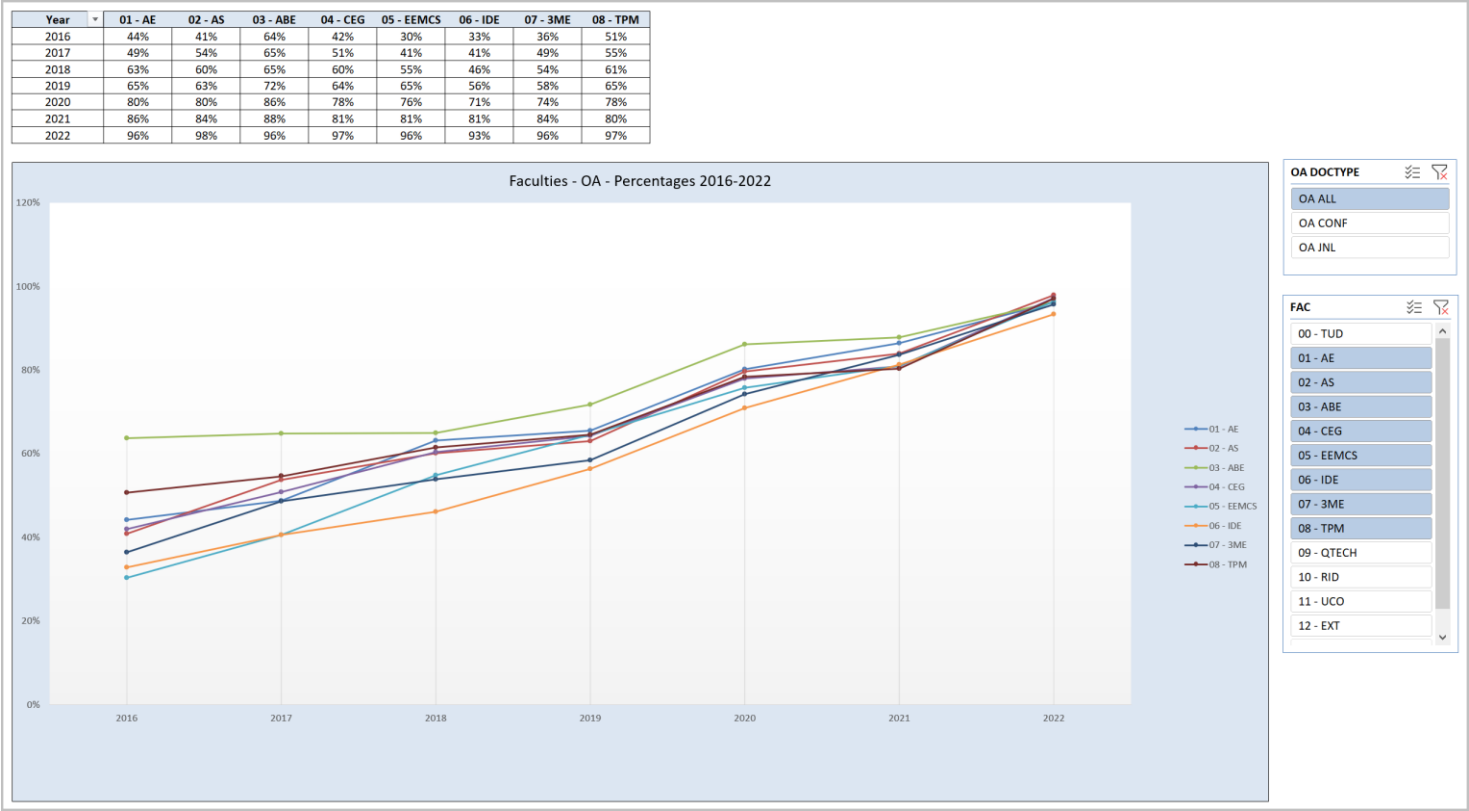
1.8.1 OA Faculties: Conference proceedings - 2016-2022 - Percentages OA



1.8.2 OA Faculties: Conference proceedings - 2022 - Percentages and number of publications OA

YEAR	OA DOCTYPE	FAC	A %	B %	C %	No OA%	OA Total %	Total %	A	B	C	No OA	OA Total	Total
2022	OA CONF	00 - TUD	1,98%	9,45%	79,76%	8,81%	91,19%	100,00%	31	148	1249	138	1428	1566
2022	OA CONF	01 - AE	0,00%	17,43%	74,69%	7,88%	92,12%	100,00%	0	42	180	19	222	241
2022	OA CONF	02 - AS	0,00%	0,00%	81,82%	18,18%	81,82%	100,00%	0	0	45	10	45	55
2022	OA CONF	03 - ABE	15,38%	13,19%	62,64%	8,79%	91,21%	100,00%	14	12	57	8	83	91
2022	OA CONF	04 - CEG	7,35%	7,35%	73,04%	12,25%	87,75%	100,00%	15	15	149	25	179	204
2022	OA CONF	05 - EEMCS	0,17%	2,24%	93,10%	4,48%	95,52%	100,00%	1	13	540	26	554	580
2022	OA CONF	06 - IDE	1,45%	21,01%	63,04%	14,49%	85,51%	100,00%	2	29	87	20	118	138
2022	OA CONF	07 - 3ME	0,00%	15,29%	72,16%	12,55%	87,45%	100,00%	0	39	184	32	223	255
2022	OA CONF	08 - TPM	1,02%	7,14%	82,65%	9,18%	90,82%	100,00%	1	7	81	9	89	98
2022	OA CONF	09 - QTECH	0,00%	0,00%	82,61%	17,39%	82,61%	100,00%	0	0	19	4	19	23
2022	OA CONF	10 - RID	0,00%	0,00%	0,00%	0,00%	0,00%	0,00%	0	0	0	0	0	0
2022	OA CONF	11 - UCO	0,00%	12,50%	81,25%	6,25%	93,75%	100,00%	0	2	13	1	15	16
2022	OA CONF	12 - EXT	0,00%	0,00%	0,00%	0,00%	0,00%	0,00%	0	0	0	0	0	0

1.9.1 OA Faculties: Journal articles AND Conference proceedings - 2016-2022 - Percentages OA



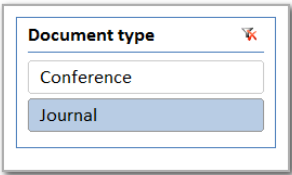
1.9.2 OA Faculties: Journal articles AND Conference proceedings – 2022 - Percentages and number of publications OA

YEAR	OA DOCTYPE	FAC	A %	B %	C %	No OA%	OA Total %	Total %	A	B	C	No OA	OA Total	Total
2022	OA ALL	00 - TUD	21,98%	30,94%	43,58%	3,50%	96,50%	100,00%	1314	1849	2605	209	5768	5977
2022	OA ALL	01 - AE	16,28%	35,50%	44,50%	3,72%	96,28%	100,00%	105	229	287	24	621	645
2022	OA ALL	02 - AS	28,03%	37,29%	32,59%	2,09%	97,91%	100,00%	215	286	250	16	751	767
2022	OA ALL	03 - ABE	36,00%	33,50%	26,75%	3,75%	96,25%	100,00%	144	134	107	15	385	400
2022	OA ALL	04 - CEG	27,02%	35,04%	35,11%	2,82%	97,18%	100,00%	354	459	460	37	1273	1310
2022	OA ALL	05 - EEMCS	14,72%	19,04%	62,63%	3,61%	96,39%	100,00%	208	269	885	51	1362	1413
2022	OA ALL	06 - IDE	22,57%	30,09%	40,75%	6,58%	93,42%	100,00%	72	96	130	21	298	319
2022	OA ALL	07 - 3ME	19,54%	34,55%	41,67%	4,23%	95,77%	100,00%	203	359	433	44	995	1039
2022	OA ALL	08 - TPM	22,75%	40,98%	33,33%	2,94%	97,06%	100,00%	116	209	170	15	495	510
2022	OA ALL	09 - QTECH	33,64%	17,27%	44,55%	4,55%	95,45%	100,00%	37	19	49	5	105	110
2022	OA ALL	10 - RID	7,69%	73,08%	15,38%	3,85%	96,15%	100,00%	2	19	4	1	25	26
2022	OA ALL	11 - UCO	21,28%	25,53%	46,81%	6,38%	93,62%	100,00%	10	12	22	3	44	47
2022	OA ALL	12 - EXT	0,00%	0,00%	0,00%	0,00%	0,00%	0,00%	0	0	0	0	0	0

2 Explanation on use and content of the Excel report

2.1 General information

A number of sheets contain reports that have been filtered using so called slicers. Example:

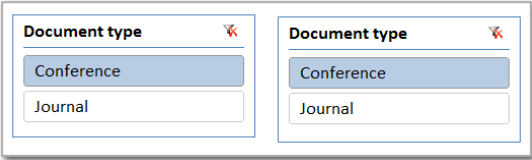
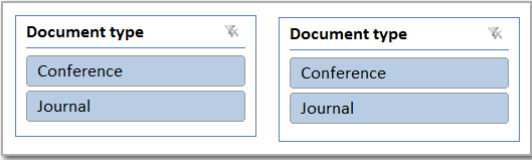
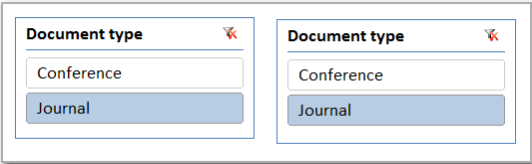


Default filtering is on Journals. In all results sheets you can use these slicers to make another selection. For example, in sheet **1 - OA TU Delft Total** you can either select Conference proceedings, Journals, or all publications. Click on Conference or Journal to make a choice or hold CTRL and click on both items to select Journal as well as Conference.

Important!

Slicers are always shown twice. This in order to make it possible to simultaneously show numbers and percentages. When you toggle slicers make sure you **ALWAYS USE BOTH** equally named slicers and that your filter selections for these slicers are exactly the same!

Examples:



In a number of results sheets you will also find (filtered) tabulated OA results for all faculties, including UNL OA Categories:

OA JOURNAL							
FAC	A	B	C	No OA	OA Tot	Total	
00 - TUD	1283	1701	1356	71	4340	4411	
01 - AE	105	187	107	5	399	404	
02 - AS	21			6	706	712	
03 - ABE	13			7	302	309	
04 - CEG	339	444	311	12	1094	1106	
05 - EEMCS	207	256	345	25	808	833	
06 - IDE	70	67	43	1	180	181	
07 - 3ME	203	320	249	12	772	784	
08 - TPM	115	202	89	6	406	412	
09 - QTECH	37	19	30	1	86	87	
10 - RID	2	19	4	1	25	26	
11 - UCO	10	10	9	2	29	31	
12 - EXT	0	0	0	0	0	0	

2.1 Description of sheets

Sheet 0 - Output Pure TU Delft 2022

Pure export data: peer reviewed journal articles and peer reviewed conference proceedings.

This sheet includes all collected (matching) information and results and is the basis for OA reporting in the subsequent sheets.

Sheet 0 - Field descriptions

Column	Field name	Explanation
A	empty	Intentionally blank
B	Custom entities	Hidden - contains formulas for custom entity reports
C	Custom entity OA Y/N	Hidden - contains formulas for custom entity reports
D	Source	Source identifier: source name, publication year and serial number, e.g. Pure_2022_0001
E	UUID	Pure UUID (unique record identifier)
F	TUD - ALL	Is a TU Delft publication (always YES)
G-Q	01 - AE, 02 - AS, 03 - ABE etc.	Publication has at least one author from this faculty (YES/NO)
R	12 - EXT	Publication identified as authored by a non-TU entity (External). Note: as of analysis year 2022 the output from Pure already excludes "External", so this value will always be NO.
S	CAT ALL	Identified UNL (former VSNU) Category (A, B, C or No OA)
T	OA	Identified as Open Access (YES/NO)
U	Document type	Document type classification (Journal or Conference)
V	Document type (Pure)	Original Pure document type classification
W	1 - DOAJ	Identified as OA, UNL Category A, using the Directory of Open Access (DOAJ) (YES/NO)
X	2 - Adm Hybrid - B	Identified as TU Delft OA, UNL Category B using the Dutch national administration of OA publications in subscription journals (YES/NO)
Y	3 - UPW - B	Identified as OA, UNL Category B, using the Unpaywall (UPW) service (YES/NO)
Z	4 - OA Fund TU Delft	Identified as OA, UNL Category B: publications for which the Article Processing Charges (APCs) have been paid using the TU Delft Open Access Fund
AA	5 - UPW - C	Identified as OA, UNL Category C, using the Unpaywall (UPW) service (YES/NO)
AB	6 - Repository - C	Identified as OA, UNL Category C, by matching repository publications with the set of Pure publications (YES/NO)
AC	7 - Taverne - no embargo	Identified as OA, UNL Category C: in accordance with the Taverne Amendment, a publishers' version has been made available through the TU Delft Repository: on 1-7-2023 the embargo period of 6 months has expired (YES/NO)
AD	8 - OA Pure - C	Identified as OA, UNL Category C, after manual check on remaining publications having Pure OA status Open but previously NOT verified as OA
AE	Surf Admin Publisher	Publisher names of publications from the Dutch national administration of OA publications in subscription journals

AF	ISSNs Original	Original ISSNs from Pure DWH
AG	ISSN-LF	ISSN-L (Linking ISSN, the preferred ISSN for a publication according to ISSN.org) or the First ISSN Original if no ISSN-L was identified
AH	Journal title	Original journal title from Pure
AI	OA status Pure	Open Access status as found in Pure DWH on 1-4-2023
AJ	DOI - clean	DOIs (cleaned/corrected if necessary). Note: a very limited number of publications have multiple DOIs. In that case only the first DOI was kept for this analysis
AK	Title	Main title from Pure DWH
AL	Subtitle	Subtitle from Pure
AM	Reference (APA)	Reference in APA format: contains basic bibliographic data of a Pure publication
AN	Is OA UPW	Is Open Access according to Unpaywall (UPW) (YES/NO)
AO	UPW OA type	Open Access colour derived from data received from Unpaywall (UPW)
AP	TU Delft OA Fund	Publications for which the Article Processing Charges (APCs) have been paid using the TU Delft Open Access Fund
AQ	Taverne no embargo on 1-7-2023	In accordance with the Taverne Amendment, a publishers' version has been made available through the TU Delft Repository: on 1-7-2023 the embargo period of 6 months has expired (YES/NO)
AR	Taverne	In accordance with the Taverne Amendment, and with the explicit consent of an author, a publishers' version has been made available through the TU Delft Repository
AS	Taverne Embargo Date	Taverne Embargo Date as found in Pure
AT	Surf OA Admin	Open Access publications in subscription journals that have been made Open Access as a results of agreements of Dutch university libraries with publishers. Information was collected using the Surf administration
AU	UPW Journal name	Journal name as identified using Unpaywall (UPW)
AV	Manual check is OA	Final manual check on OA status of publications with Pure status OA = Open that were still not assigned to an Open Access category A, B, or C at the end of the previous "batch" matching steps
AW	DOAJ Title match only	A publication was identified as Gold (Category A) after matching and verifying journal titles from Pure with the 'frozen' DOAJ list of 31-12-2022, but was not previously identified using ISSNs for matching
AX	Multiple DOIs	A record has multiple DOIs. Note: this is only the case for a limited number of records. In most cases the first DOI is kept for further matching and all other DOIs discarded
AY	Duplicate DOIs	Multiple records have the same DOI. Note: no duplicate DOIs were found for the 2022 analysis

0 - FAC data 2016-2022

Data table with Open Access percentages and number of publications for all faculties for the period 2016-2022.

Sheet 1 - OA TU Delft Total

Total Open Access for TU Delft 2022.

Sheet 2 - OA TU Delft Total UNL Cat

Total Open Access for TU Delft 2022 specified according to UNL Categories (A, B, C, or No OA).

Sheet 3.1 - OA Journal art. 2014-2022

Open access statistics and trend for journal articles for the period 2014-2022 for TU Delft.

Sheet 3.2 - OA conf 2016-2022

Open access statistics and trend for conference proceedings for the period 2014-2022 for TU Delft.

Sheet 4 - OA UNL CAT TUD 2016-2022

Open access statistics and trend for the period 2016-2022* for TU Delft specified according to UNL Categories (A, B, C, or No OA).

* No prior data is available: the UNL/VSNU Framework formalizing guidelines on category classification was made public in April 2017, and used for the first time for the analysis of publications from 2016.

Sheet 5 - FAC OA % 2016-2022

Open Access percentages for the period 2016-2022 for all faculties.

Sheet 6 - FAC OA N pub 2016-2022

Number of Open Access publications for the period 2016-2022 for all faculties.

Sheet 7 - FAC No OA % 2016-2022

Non-Open Access percentages for the period 2016-2022 for all faculties.

Sheet 8 - FAC No OA N pub 2016-2022

Number of Non-Open Access publications for the period 2016-2022 for all faculties.

Sheet 9 - FAC Gold % 2016-2022

Gold Open Access percentages for the period 2016-2022 for all faculties.

Sheet 10 - FAC Gold N pub 2016-2022

Number of Gold Open Access publications for the period 2016-2022 for all faculties.

Sheet 11 - FAC Hybrid % 2016-2022

Hybrid Open Access percentages for the period 2016-2022 for all faculties.

Sheet 12 - FAC Hybrid N pub 2016-2022

Number of Hybrid Open Access publications for the period 2016-2022 for all faculties.

Sheet 13 - FAC Green % 2016-2022

Green Open Access percentages for the period 2016-2022 for all faculties.

Sheet 14 - FAC Green N pub 2016-2022

Number of Green Open Access publications for the period 2016-2022 for all faculties.

Sheets 01-12 - Faculty name - OA YES-NO

Open Access 2022 figures for a specific faculty.

Note: Sheet 12 - EXT has been hidden since there were no publications assigned in 2022 to this entity.

Sheets 01-12 - Faculty name - OA CAT UNL

Open Access 2022 figures for a specific faculty specified according to UNL Categories (A, B, C, or No OA).

Note: Sheet 12 - EXT has been hidden since there were no publications assigned in 2022 to this entity.

Sheet 13 - Paste custom entities

Sheet to enable reporting on OA 2022 figures for custom entities, e.g. a specific TU department. Please refer to the instructions provided in this sheet.

Note:

If you need to build a custom-made OA-report on e.g. faculties, departments and sections, you can also use the snapshot of 1-4-2022 in Pure DWH and link that to the data in Sheet 0 - Output Pure TU Delft 2022 using the Pure UUID.

Sheet 13.1 - OA YES-NO Custom entity

Total Open Access for a custom entity, e.g. a specific TU department. Based on the custom input from sheet 13.

Sheet 13.2 - OA UNL Cat Custom entity

Total Open Access for a custom entity, e.g. a specific TU department, specified according to UNL Categories (A, B, C, or No OA). Based on the custom input from sheet 13.

3 METHODOLOGY

3.1 INPUT: collection, cleaning and preparation of data and sources

All necessary data and sources were collected and prepared for the analysis. In order to optimize and maximize the identification of OA status of publications all data, especially key fields needed for matching and identification (ISSNs, DOIs, and UUIDs from Pure) were properly checked and cleaned if necessary.

The following sources were used for collecting the necessary information to make it possible to identify TU Delft Open Access publications and classify these according to the April 2017 UNL/VSNU Framework Monitoring Open Access.

3.1.1 Publication data from Pure DWH (Data Warehouse) and Pure (CRIS)*

Attention!

To analyze data from 2022, a snapshot of Pure from the TU Delft Data Warehouse is used as the main source. In previous years analyses were solely based on a direct export from the Pure Current Research Information System (CRIS).

In the Pure Data Warehouse, the document type "conference article" is categorized as "conference proceeding", whereas previously it was classified as "journal article" (referring to conference articles published in a journal).

As a result, in the current analysis, 155 publications have been reclassified from the "journal" category to the "conference" category. Please keep this in mind, particularly when comparing the current analysis with previous ones.

Pure DHW:

- Export/snapshot date: 1-4-2023
- Publication year: 2022
- Peer reviewed
- Document types:
 - Conference*
 - Conference article
 - Conference contribution
 - Paper
 - Journal
 - Article
 - Comment/Letter to the editor
 - Letter
 - Review article

*Only used for internal reporting. UNL reporting is limited to peer reviewed journal articles.

Pure CRIS:

Only used to retrieve additional metadata that was not available in Pure DWH:

“Subtitle” and “APA reference”

- Export date: 7-4-2023
- Publication year: 2022
- Peer reviewed
- article, comment/letter to the editor, conference article, letter and review article
- chapter in book/conference proceedings/edited volume, conference contribution, contribution to conference paper

3.1.2 DOAJ Journal list

The Directory of Access Journals (DOAJ) can be used to determine if a publication is Gold OA. According to the UNL Framework all universities must use the same 'frozen' version from 31-12-2022.

- Export date: 31-12-2022
- ISSNs were identified and used to find the ISSN-L (Linking ISSN, the preferred ISSN for a publication according to ISSN.org) If no ISSN-L match was found, the first ISSN was kept
- To identify journal titles for which ISSN did not result in a match, journal titles from Pure and Unpaywall were utilized to find matching journal titles

3.1.3 Surf OA administration: data from publishers on OA (hybrid) publications

As a results of agreements of Dutch university libraries and publishers regarding Open Access an increasing number of publications in subscription journals are being made Open Access. Reports from publishers on these so called hybrid OA (UNL Category Gold, B) publications are collected nationally. The available list of DOIs has been used to to identify TU Delft (co)authored publications.

- Retrieval date 11-4-2023 and version date: 3-8-2023

3.1.4 TUD OA Fund

This list is exported from the TU Delft Repository. It identifies publications for which the APCs (Article Processing Charges) have been paid through the TU Delft Open Access Fund. These publications are at least classified as Category B (Gold, not DOAJ classified OA/Hybrid):

- Export date: 7-4-2023
- Label OA Fund TU Delft

3.1.5 Institutional Repository list

This list can be used to determine whether a TU Delft publication is at least Green OA:

- Export date: 5-4-2023
- Publication year: 2022
- Visibility: Public - no restriction
- Workflow status: Approved or Validated
- Research output has an association to file
- Open access permission NOT closed, embargoed or restricted

3.1.6 Unpaywall (UPW)

Unpaywall's API (api v2 at <https://api.unpaywall.org/>) was queried using the cleaned DOIs from the Pure publication data (3.1.1). The resulting csv-report was used to identify and classify TU publications. Using calculations following the flow described at the UPW support portal ([link](#)) we were able to find evidence for the following OA categories for a publication:

- Gold: OA publication in an OA journal (UNL Category A)
- Hybrid: OA in a subscription based journal (UNL Category B)
- Bronze: accessible on a publisher's journal website, but no identified OA-license
- Green: available through a trusted repository (UNL Category C)
- Closed: not OA (UNL Category D, in our report: no-OA)
- Retrieval date: 4-4-2023 and 5-4-2023

Notes:

In order to comply with the guidelines drawn up in the UNL Framework we initially only use the UPW Green and Hybrid classifications for our matching. UPW Gold, but not identified using the DOAJ journal list, was then classified as Category B (Gold, not DOAJ Classified).

The output from UPW also uncovered additional ISSNs. These were added to the list of already identified ISSNs and subsequently used to match TU Delft publications with the DOAJ journal list.

Bronze publications are not universally recognized as being sustainable OA and thus have been disregarded for our analysis. The status Closed will already be determined automatically at the end of our analysis and will consist of all publications for which we could find no conclusive OA evidence.

3.1.7 Taverne

- Retrieved from TU Delft repository searching for "taverne project"
- Retrieval date: 7-4-2023

Note:

For the 2022 analysis an article was classified as Open Access if the embargo date is 1-7-2023 or earlier. In the previous analysis this was set somewhat earlier (1-5-2022).

From: <https://www.openaccess.nl/en/in-the-netherlands/you-share-we-take-care>, retrieved on 26-4-2023:

(...)

The ambition of the Netherlands is to achieve 100% open access by 2020. Agreements have been made with many publishers about open access publishing. Unfortunately, this is not possible for all types of publications or journals. However, Dutch copyright law offers an alternative.

Article 25fa of the Dutch Copyright Act (Taverne Amendment) allows researchers to share short scientific works (e.g. articles & book chapters), regardless of any restrictive publishers' guidelines.

Taverne Amendment

"The maker of a short scientific work, the research for which has been paid for in whole or in part by Dutch public funds, shall be entitled to make that work available to the public for no consideration following a reasonable period of time after the work was first published, provided that clear reference is made to the source of the first publication of the work."
(Dutch Copyright Act 2015)

The Dutch universities decided to give open access an extra boost from 2019 by starting a pilot early 2019. On the basis of the Taverne Amendment, the publishers' versions of short scientific works can be made available after six months via the university repository. (...). In 2020 Dutch Universities and University Medical Centers started implementing the Taverne amendment widely. The way in which this is done differs per institution. (...)

Conditions for participation

The university libraries can make your publication available in the repository. The period of publication after six months applies under the following conditions:

- The publication is funded wholly or partly with Dutch public funds. That is the case if the work was done for a university or UMC; see also the point below.
- The maker(s) has/have an employment contract with an institution affiliated to the UNL; the makers can be both authors and co-authors.
- It is a short scientific work; this has the length of a scientific article or book chapter in an edited collection.

(...)

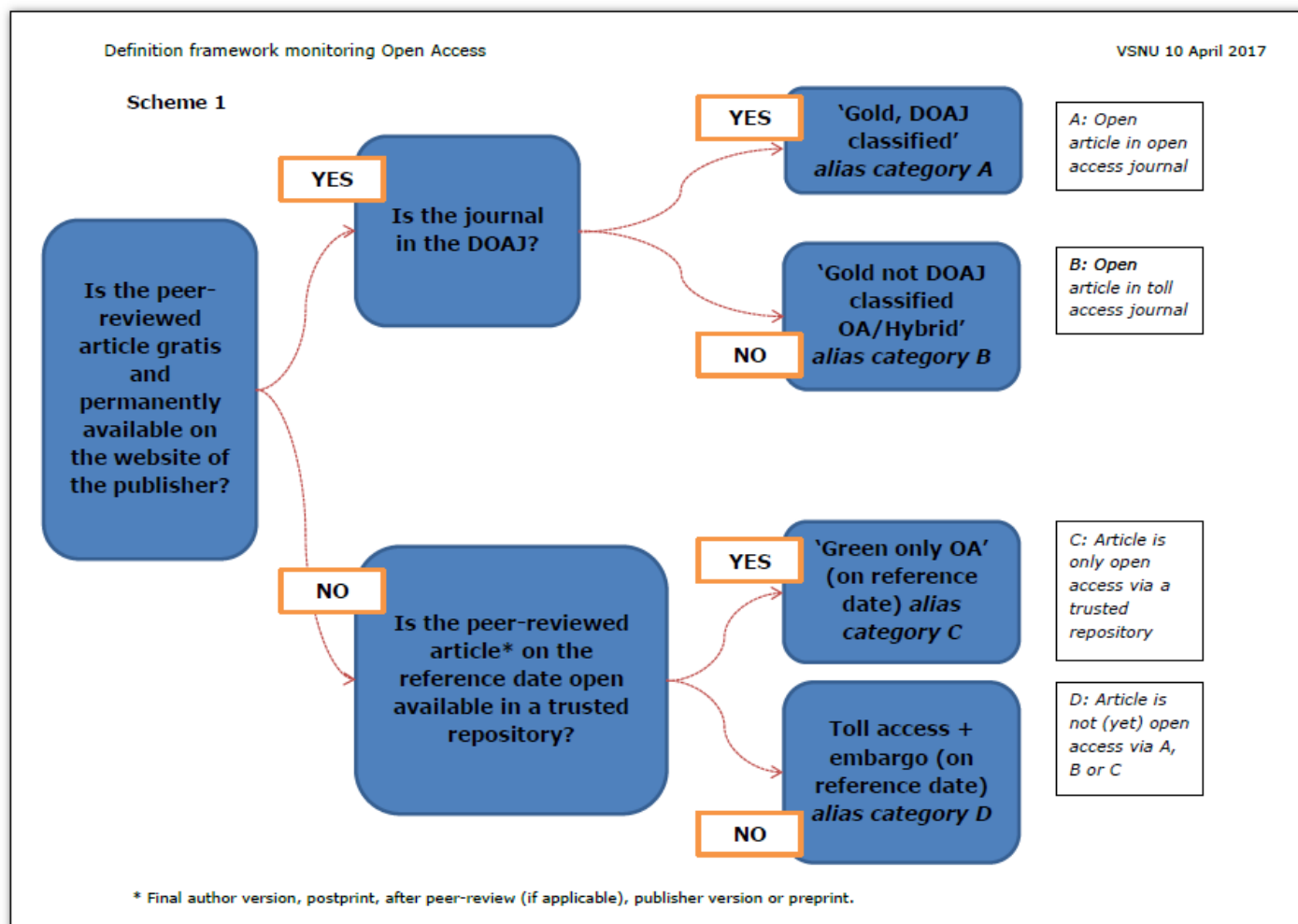
More information on this initiative and specifics for TU Delft can be found at:

TU Delft: You Share, we take care! <https://www.tudelft.nl/en/library/library-for-researchers/library-for-researchers/publishing-outreach/you-share-we-take-care>

3.2 MATCHING: matching and determining OA status of publications

The final classification of a TU Delft publication is determined using the April 2017 VSNU* Framework monitoring OA. The matching and classification follows the scheme below:

* former name of Universities of the Netherlands (UNL)



In practice matching and classification is done by matching all TU Delft publications from Pure with all other collected sources using the steps and order described in the following table.

Note:

A publication will only be assigned to one UNL Category: the highest possible category for which we have found evidence!

Step	Source	Match fields	If match is YES: Assigned OA status
1	Directory of Open Access (DOAJ)	ISSN OR Title match DOAJ-Pure	Category A (Gold, DOAJ classified OA)
2	Surf OA administration	DOI	Category B (Gold, not DOAJ classified OA/Hybrid)
3	Unpaywall : Gold/Hybrid status	DOI	Category B (Gold, not DOAJ classified OA/Hybrid)
4	Repository: OA Fund TU Delft	Pure UUID	Category B (Gold, not DOAJ classified OA/Hybrid)
5	Unpaywall: Green status	DOI	Category C (Green only OA)
6	Repository Pure UUID	Pure UUID	Category C (Green only OA)
7	Repository: label Taverne (and no embargo on 1-7-2023)	Pure UUID	Category C (Green only OA)
8	OA status Pure = open*	Open Access status Pure: Open (not A, B, C) manual check	Category C (Green only OA)

* After performing steps 1 through 7 - a limited set of publications with Pure status OA = Open remained unassigned to category A, B, C or non-OA. These were checked manually to determine if they are actually are Open Access or not.