

Bitlocker drive encryption

For use by:	Employees
Version:	1.2
Date:	28-03-2019
Owner:	ICT

(this page was intentionally left blank)

Encryption process Bitlocker

Before you begin

In this manual you can find the instructions to use BitLocker to protect your data on TU Delft managed computers (laptops and desktops) that run on Windows 10.

TU Delft attaches importance to handling our digital information securely. The digital information of our students and employees is of high importance for our research and education.

In order to protect our digital information now and in the future, we want to secure our (sensitive) data and make sure they are stored safely.

Encryption of our data helps us to secure our data in an effective and user-friendly way. In the coming period, we will encrypt the computers (laptops/desktops) managed by the TU Delft. We will do this gradually.

This document provides more information about the process of encryption for computers with Windows 10 (BitLocker). If you have any questions, please check security.tudelft.nl for more information or contact the Servicedesk.

How does the encryption impact me and my computer?

During the encryption process you are able to use your computer and perform your regular activities. Your computer may process on lower speed during the encryption process.

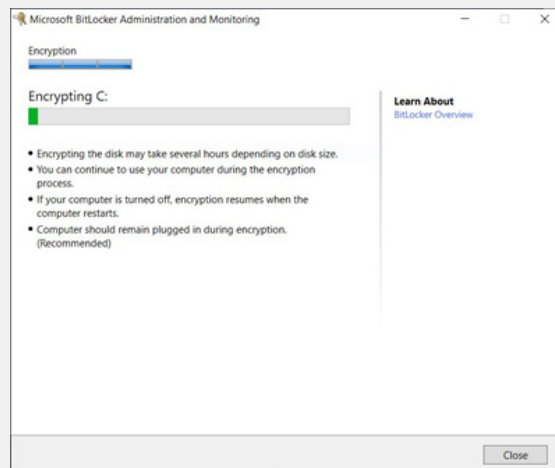
When installation is completed, you can log in to your computer with your regular NetID and password. There are no changes in the user's experience.

How does it work?

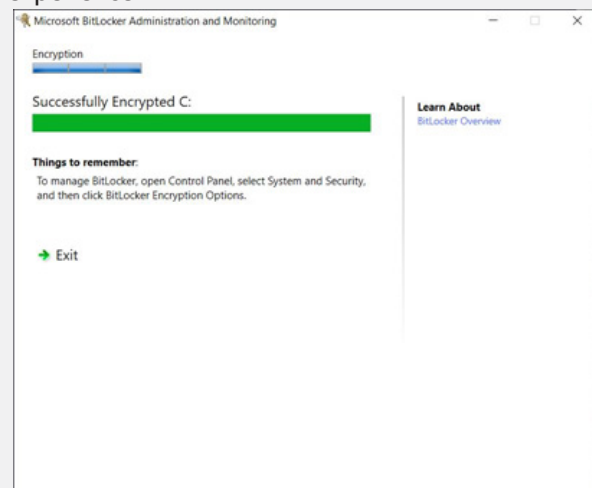
Step 1: You will receive a pop-up message on your computer screen with the request to start the encryption process. You can postpone the encryption process for a maximum of 10 days. After 10 days, the encryption process starts automatically.



Step 2: During the encryption process you are able to use your computer and perform your regular activities. Your computer may process on lower speed during the encryption process, which may take up to a few hours.



Step 3: When the encryption process is completed, no further action is required. You can log in with your NetID and password. There are no changes in the user experience.



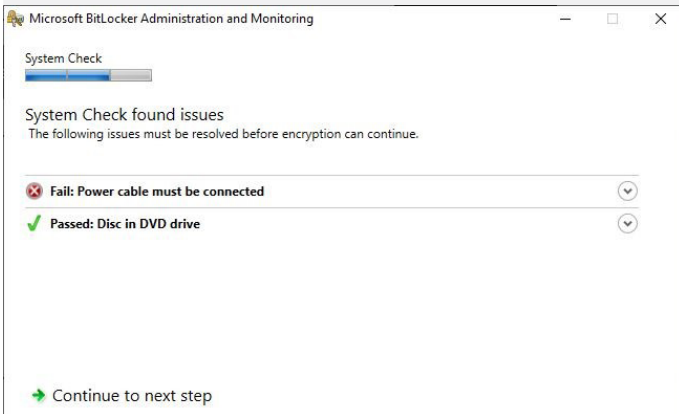
Can I turn off my computer during the installation of the encryption software?

Yes. The installation will proceed when you turn on your computer.

Does my computer need to be connected to a power adapter during the installation of the encryption?

A precondition for starting the encryption process is that your computer must be connected to a power adapter. If your computer is not connected, you will receive a request (pop-up message, see screenshot 4) to connect your computer to a power adapter.

When the encryption process has started, a connection to a power adapter is not required. Except when the battery of your computer is low.



I log in on my local admin account, but I do not receive a pop-up message with the request to start the encryption process. What should I do?

In order to start the encryption process, you will need to log in as domain user one time only.

I have already encrypted my computer manually with Bitlocker software. What should I do?

Your local recovery key will be synchronized with the server key. When synchronization is finished, your recovery key is stored on a secure server of the TU Delft. You will not receive a confirmation of this synchronization process. If you would like to know whether your local recovery key is synchronized with the server key, please contact the Servicedesk or create a call in Topdesk.

How do I check if my computer is already encrypted?

- 1) Search for "Bitlocker" in the windows search bar
- 2) Select "Manage Bitlocker"
- 3) If your computer is encrypted, you will see image A. If your computer is not encrypted, you will see image B. If your computer is in the process of encrypting, you will see image C.



Figure A

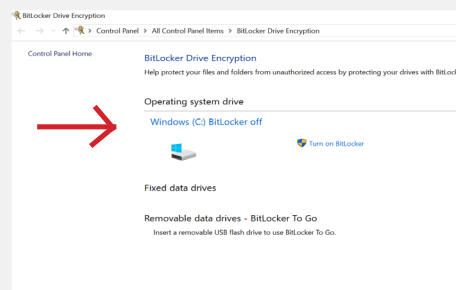


Figure B

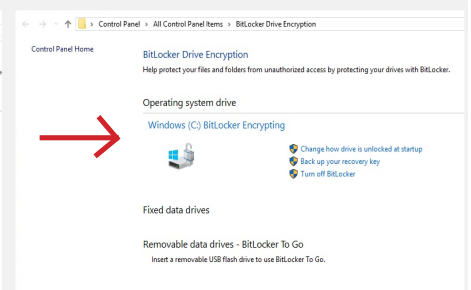


Figure C