

SPS Feedback

28.02.2024 – 11.03.2024

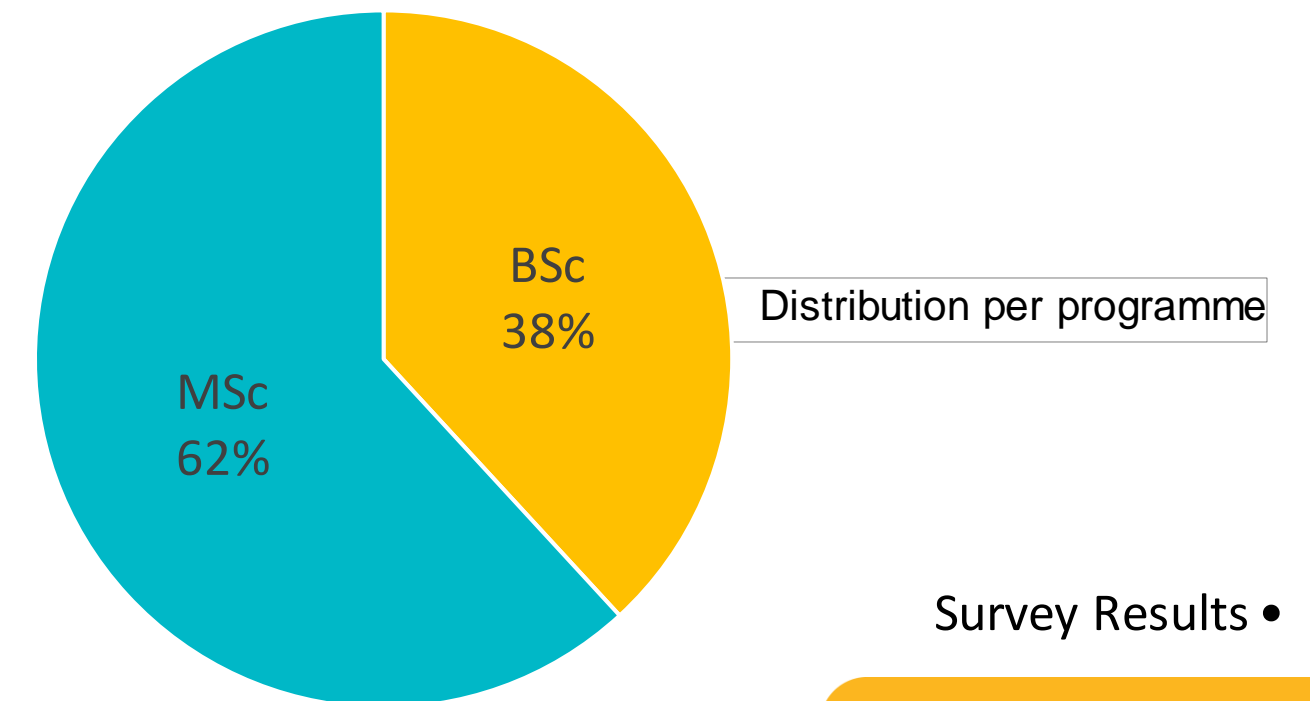
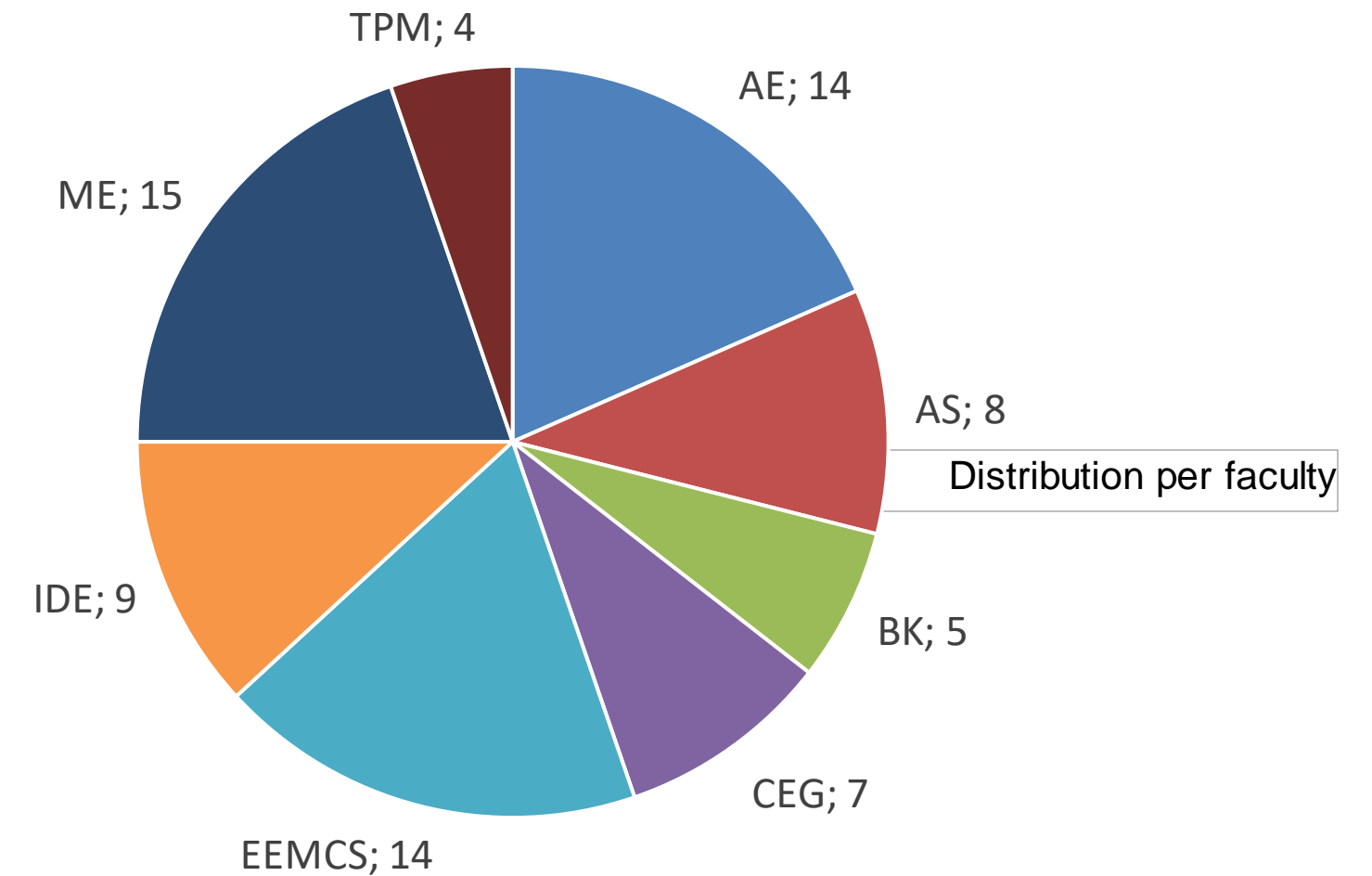
Topic of research

The Student Panel Surveys are used to retrieve student perspectives on current topics within TU Delft. To be able to maintain high quality results and enough respondents, the Student Panel was asked to give some feedback on their experience of the surveys.

Survey Insights

- Overall, the main motivator for students (15 out of 47 responses) were the rewards, consisting of the Bol.com voucher raffle and the sweatshirt after 10 surveys, and the opportunity to give feedback on various topics that are relevant to students at TU Delft.
- Most students find the survey topics to be interesting (55 out of 76 respondents) and find the surveys relevant as well (46 out of 76 respondents).
- Students enjoy the accessible nature of the surveys due to their length and the type and mix of questions that are asked in each survey.
- For future surveys, students have indicated a desire for a Dutch translation of the surveys, a larger number of relevant topics, more clarity on the topic and questions of a survey, and some form of feedback or summary of the results of the surveys they have responded to.

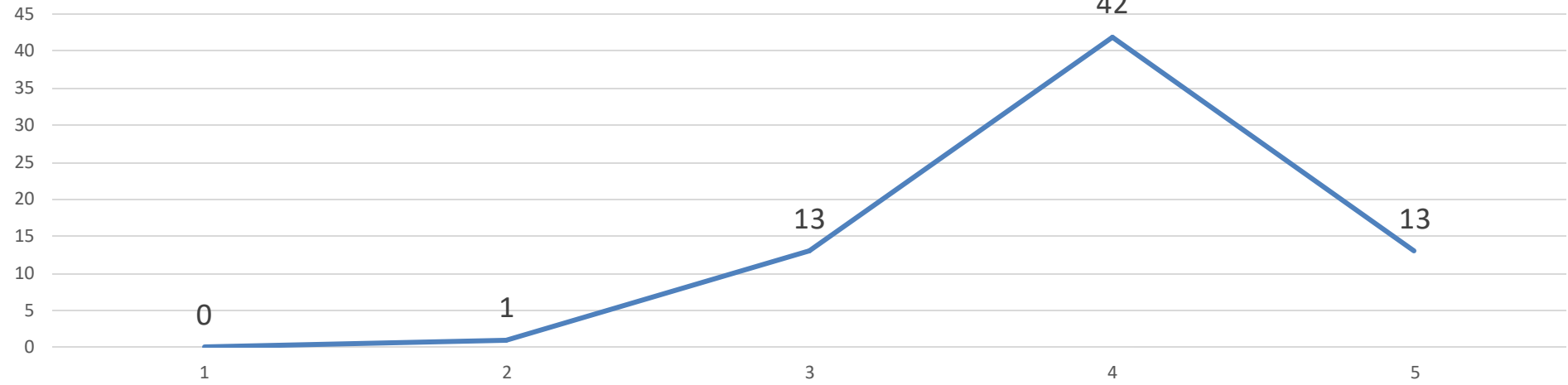
Survey Respondents | 76 Respondents



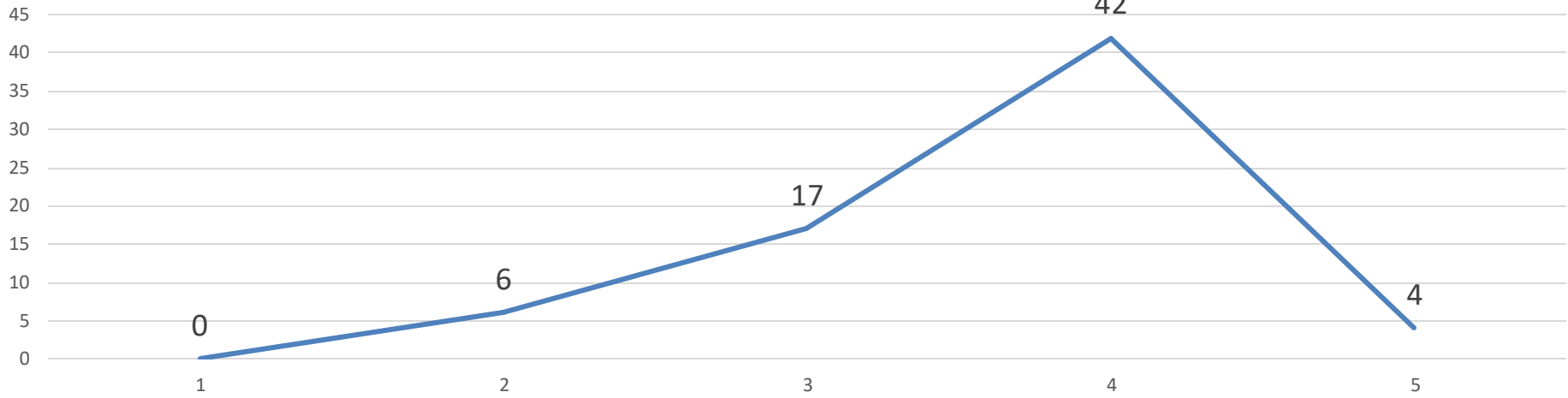
Survey Results •

Please indicate whether or not you agree with the following statements 69 Respondents

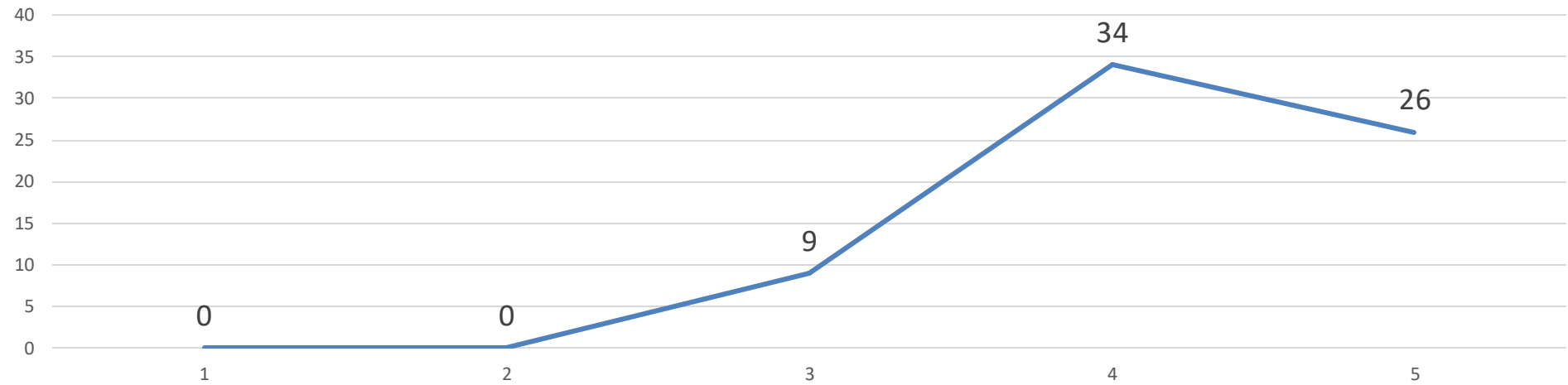
I care about the topics covered in the SPS



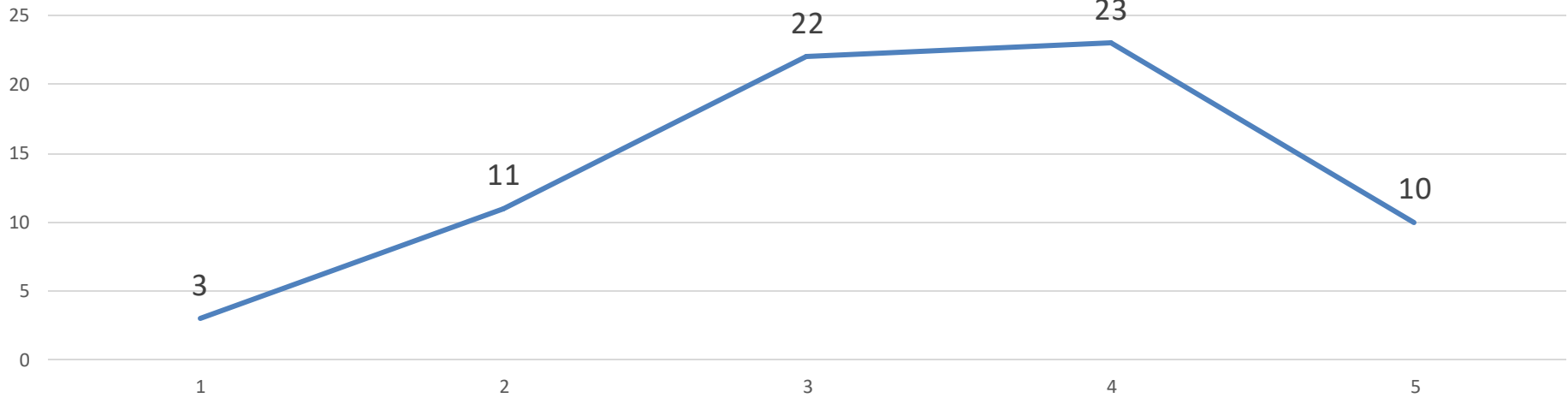
I find the SPS relevant



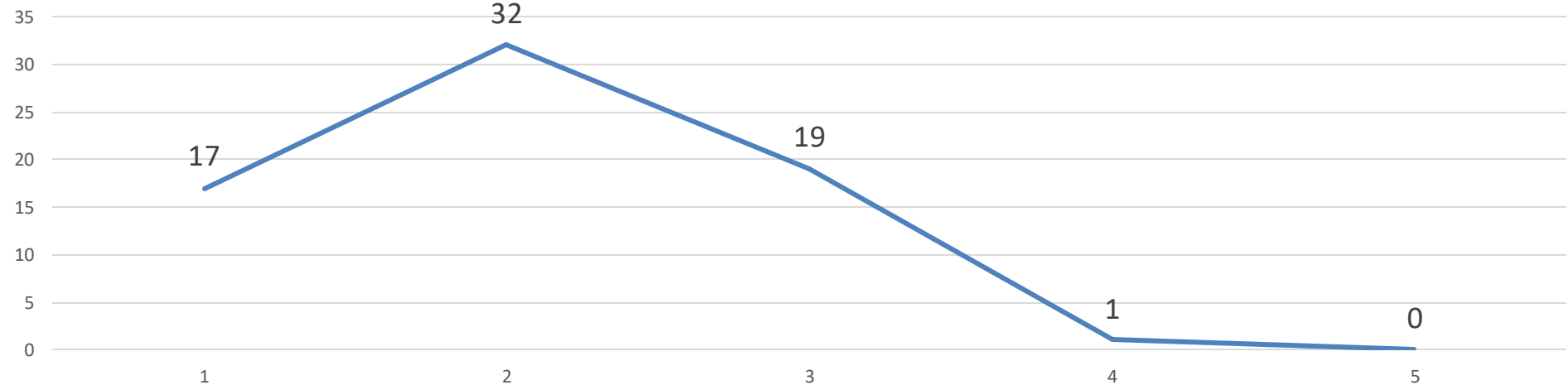
The SPS are a convenient way for me to provide feedback



I like having the option to discuss the topic in depth through focus groups

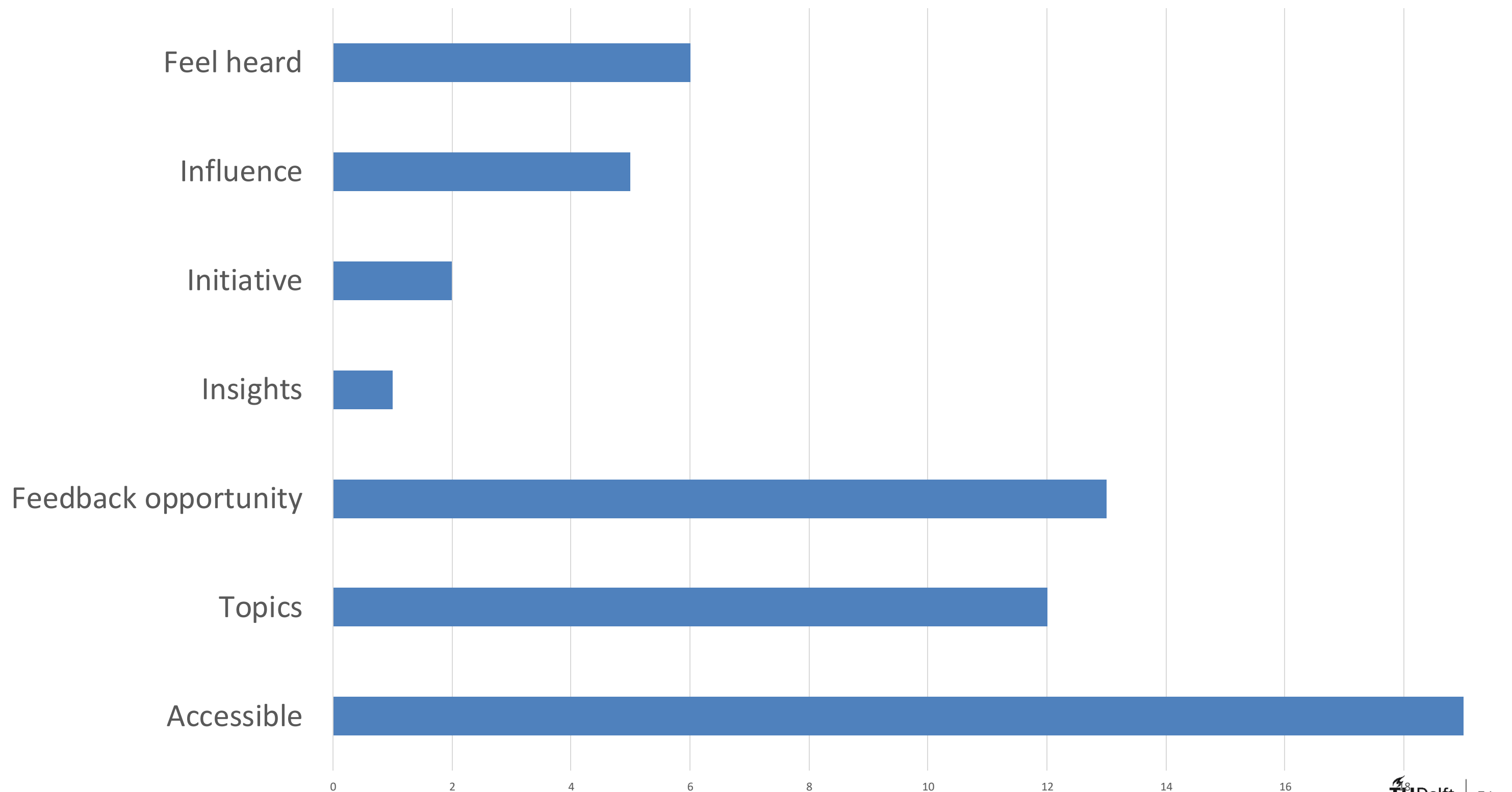


I find the SPS time consuming



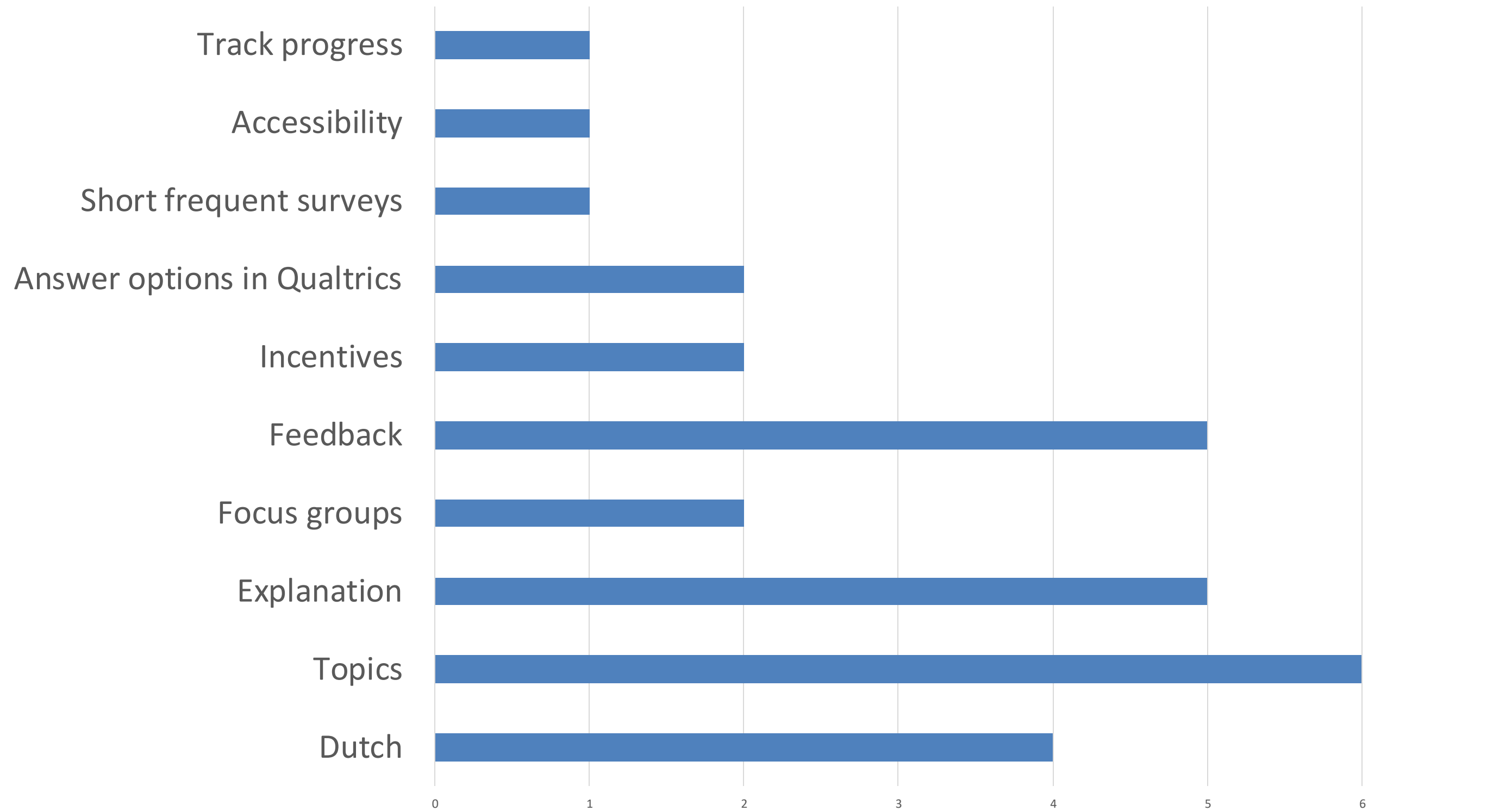
39 Respondents

What do you appreciate about the Student Panel Surveys?



What could we improve in the upcoming surveys?

29 Respondents



What motivated you to respond to the Student Panel Surveys?

47 Respondents

