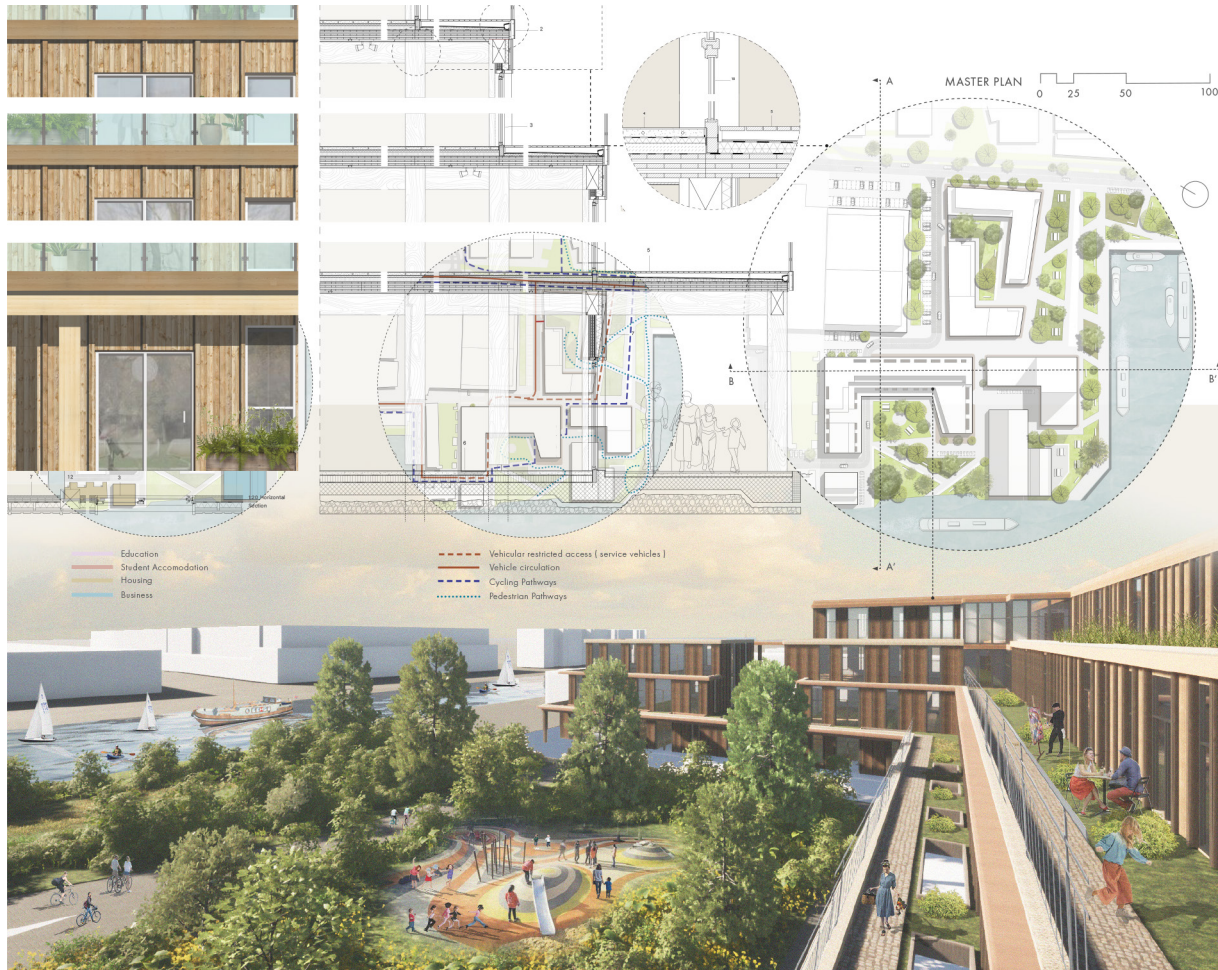


Architecture and Dwelling

MSc 1 - Fundamentals of Housing Design



Marta Carvalho & Kjestin Yee, design for a new residential building focussing on families; fragment design and final elaboration by Marta Carvalho, MSc1 2022

Tutors:

Theo Kupers
Harald Mooij
Pierijn van der Putt
Jacques Vink
Ana Rocha

Coordinators:

Harald Mooij
Pierijn van der Putt

Collaborations:

- Municipality of Amsterdam
- Architects and urban design offices

Code	AR1AD014
Credits	10 ECTS
Location	Delft
Excursion	Yes
Costs	€ 0,-

In the MSc1 Fundamentals of Housing Design studio you will actively engage in all aspects of contemporary housing design, throughout the different scales: from the individual dwelling to an inclusive city neighbourhood.

In both design and analysis, you will explore the playful game of linking & stacking, repetition & variation, access & circulation, type and typology, while consciously applying concepts of structure and spatiality, sustainability and climate responsiveness, materiality and expression.

With the acquired knowledge and skills, you will design in full detail a residential building within a mixed housing neighbourhood in the contemporary Dutch context.

Ever since the beginning of the 20th century, The Netherlands nurtures a strong tradition in innovative architectural and urban design for residential buildings and neighbourhoods. With influences

to and from the European context, new design concepts, typologies and solutions have incessantly renewed the possibilities to create meaningful living conditions that match the needs and demands of a changing society.

Through analysis, workshops, literature study and lectures, you will get acquainted with this tradition and become part of it by designing new solutions for contemporary needs.

The design project focuses on the Sloterdijk area in Amsterdam, a site with at present a rather non-descript array of small industries and businesses. The municipality of Amsterdam foresees a dramatic transformation here towards a mixed housing and working area with a highly urban character. You will work within the tentative urban master plan that the municipality has made for this site.