

Architecture & Dwelling

MSc3/4 Designing for Care in an Inclusive Environment
Towards a healthy and inclusive environment

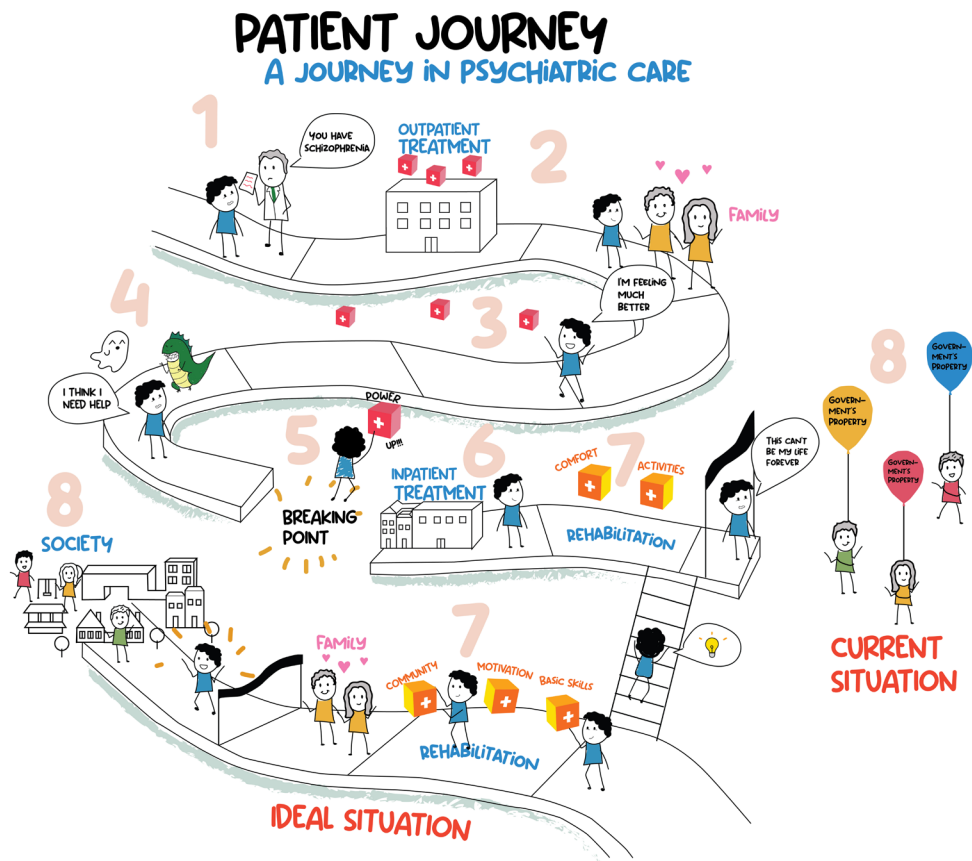


Image by Romina GurkanSau (2022/23)

Course Coordinator
 Birgit Jürgenhake

Tutors
 Birgit Jürgenhake
 Elke Miedema

Code	AR3AD110
Credits	55 ECTS
Location	tba
Excursion	to design site
Costs	-

We are, now more than ever, aware of the role of our everyday (built) environment on our health and quality of life. For instance, views on nature, access to services, fresh air, daylight, privacy, having control over your environment, attractive stairs are just a few of the design features that architects can use to support healthcare through design.

The current societal-, health-, and care-related issues require a transformation of the healthcare system. Instead of only treating disease, new models also pay attention to prevention of disease, promotion of health, informal care concepts within our neighborhoods and quality of life. And, while healthcare used to take place in hospitals and nursing homes, health-care will take place much more within our communities as part of a network of health and care. What does this change mean for designing buildings for care?

This MSc3 studio questions how to design for health and care. How can

space offer the care for those who will need it? What are general and specific spatial needs for certain population?

The integration of ethnographic research methods provides an unique opportunity for the student to meet their target populations and understand their specifics (spatial/care) For instance; you may stay at an elderly home for 5 days and nights together with one other student, participate in the daily life, observe the situation and people and talk to the elderly and caregivers.

The fieldwork will provide input for the development of a design proposal for new care home concepts like homes for elderly, for children and (young) adults with mental health issues, or short-term care needs (patient hotel). Or you can focus on other health/care related building typologies that are part of the network for care, such as primary care centre, hospice, cancer support centres or healthy neighbourhoods.