



**European #ClimateTalk
2022**

An aerial photograph of Rotterdam, Netherlands, taken at sunset. The city's skyline is visible, featuring several prominent skyscrapers and the Erasmus Bridge crossing the Nieuwe Maas river. The sky is filled with warm, orange and yellow hues from the setting sun. A large, semi-transparent red circle is overlaid on the left side of the image, containing the text 'Rotterdam Delta City' in white. The overall scene captures the urban landscape and its integration with the waterways.

Rotterdam Delta City

An aerial photograph of a city skyline, likely Philadelphia, featuring a mix of historic and modern architecture. A river flows through the foreground, bordered by a street with trees. The sky is blue with scattered white clouds. Overlaid on the left side of the image are four overlapping circles in shades of pink, red, yellow, and teal. The text 'The changing City' is centered within the teal circle.

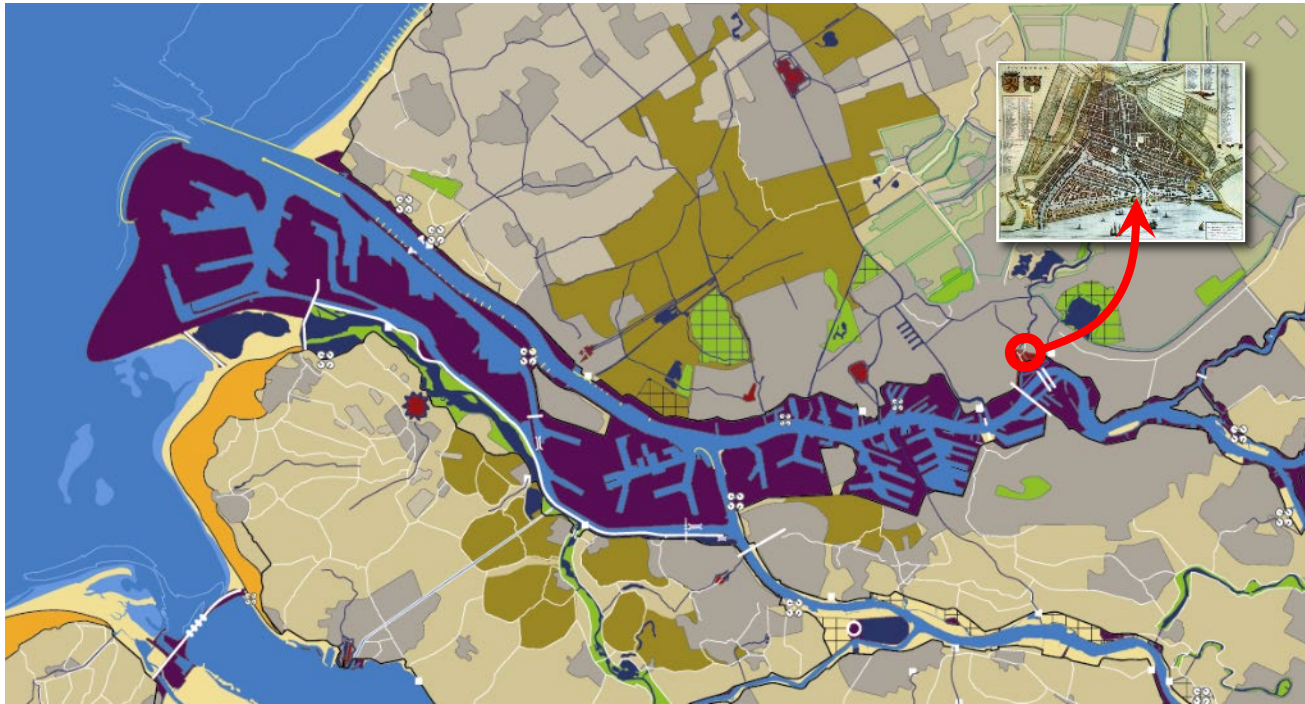
The changing City



1270



1854



City

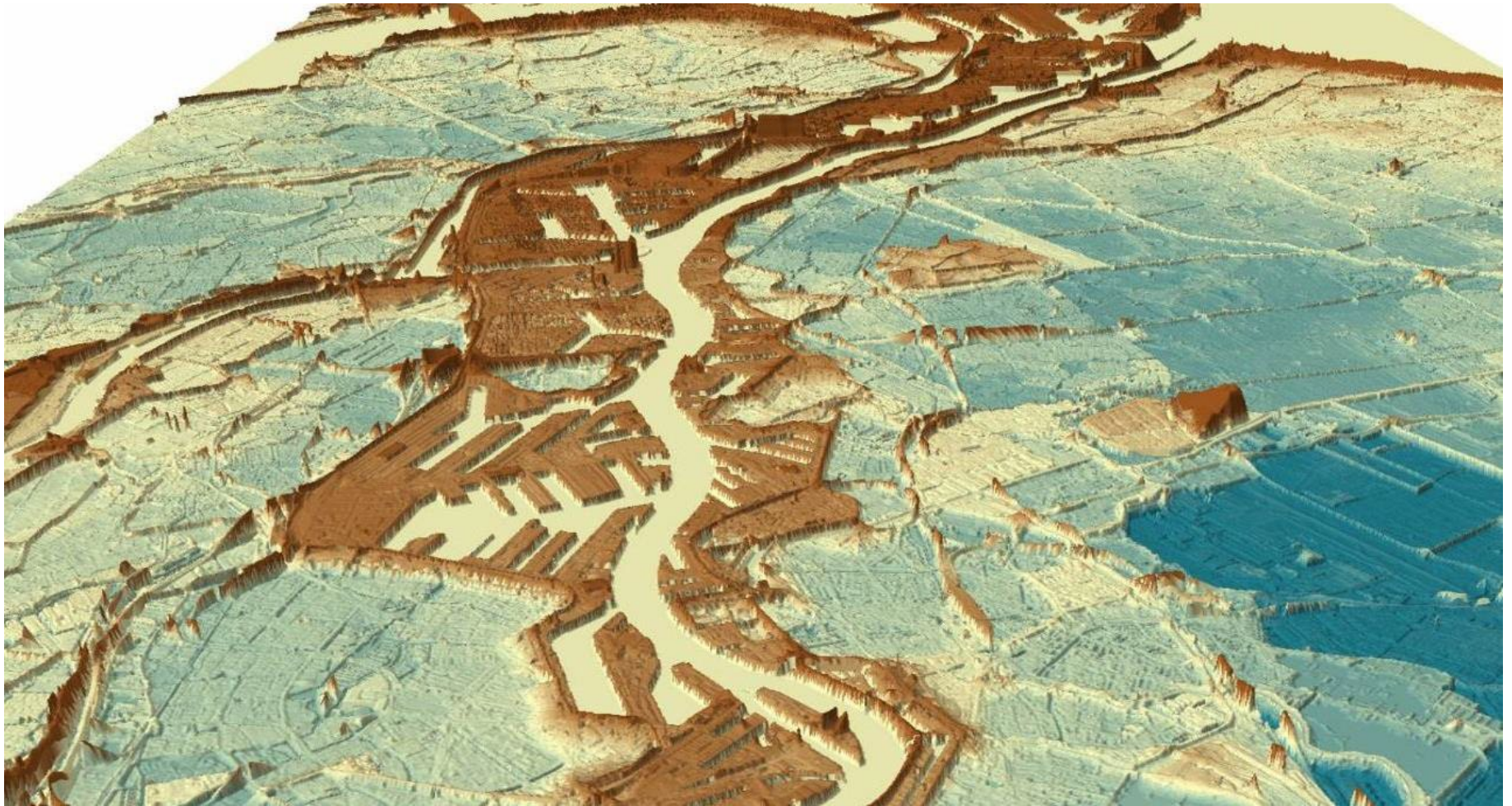
Area : 325 km²
 Inhabitants: 640,000
 Nationalities: 175
 Municipal Budget: 3,8 billion Euro's

Region

Inhabitants: 3,600,000

Port

Area: 105 km² (50 km² commercial sites)
 Length of port area: 40 km.
 Direct employment: over 70,000 jobs
 Goods throughput: over 400 million tonnes of goods per annum
 Shipping: 33,000 sea-going vessels and 110,000 inland vessels per annum



Precipitation

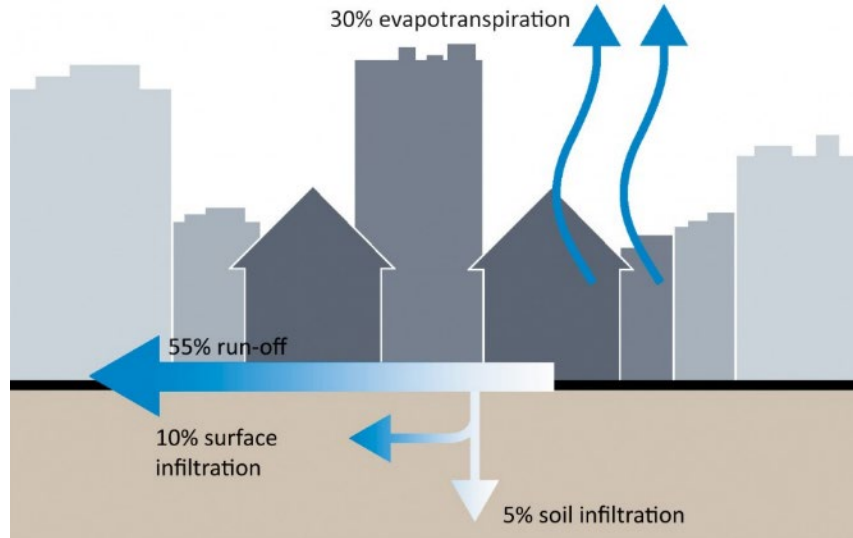
River

Sea

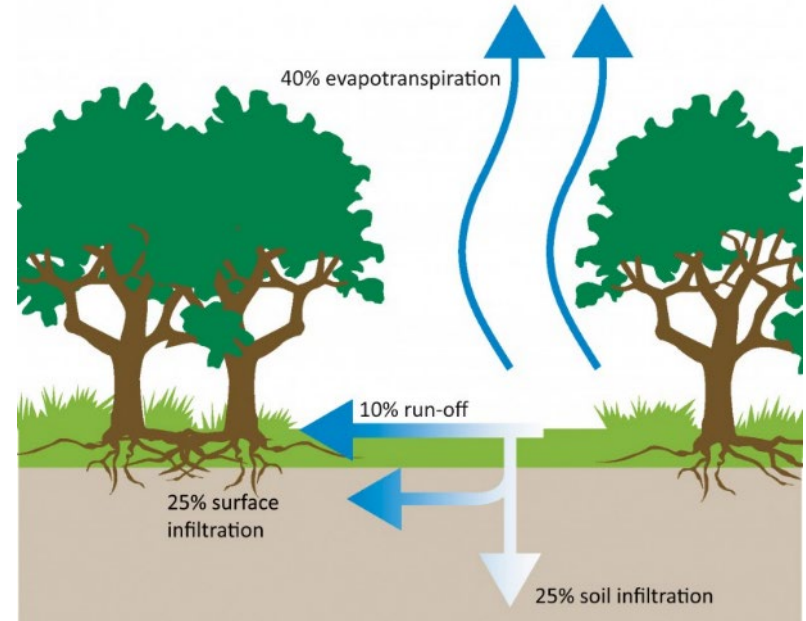
Groundwater







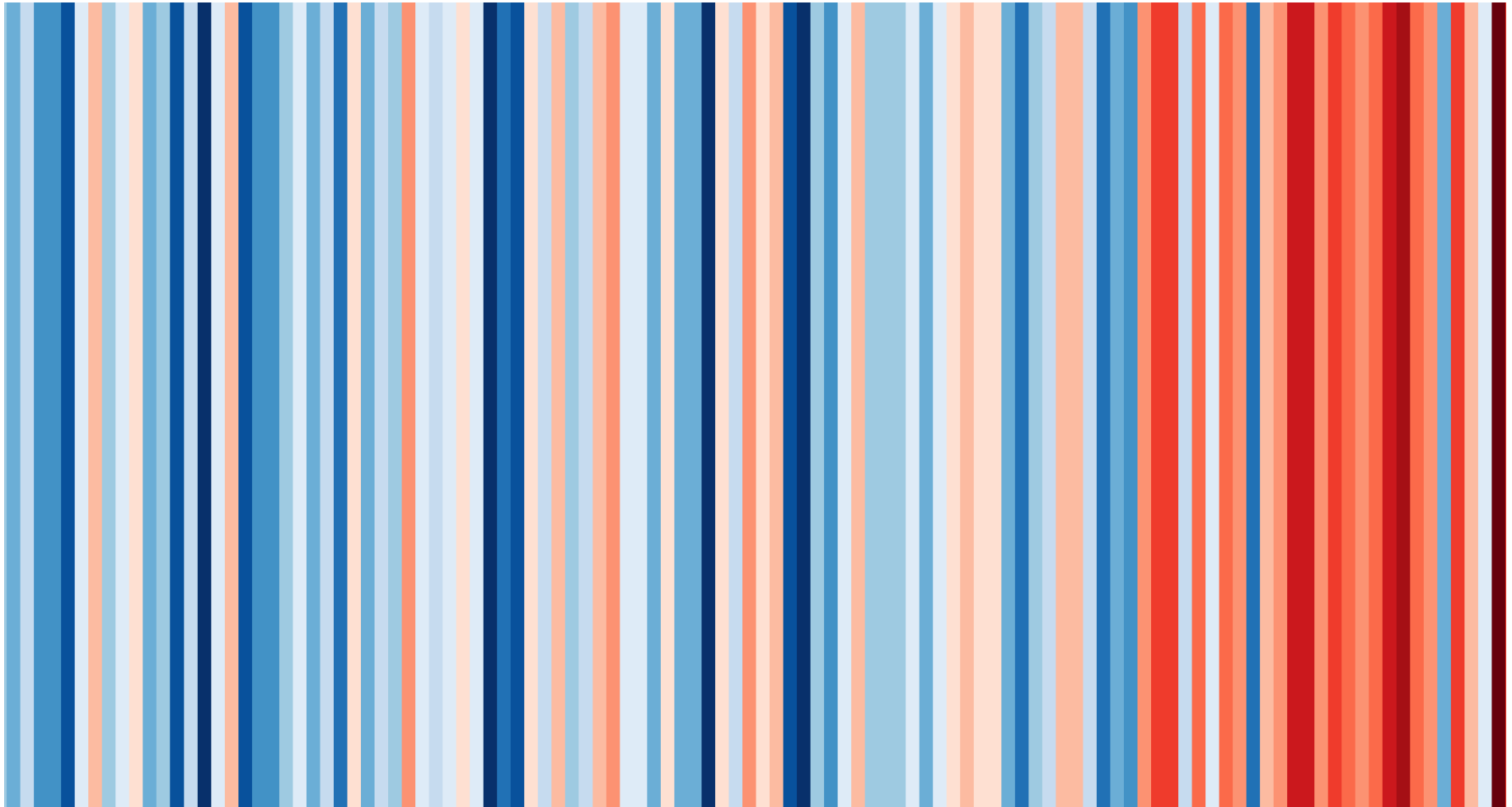
Urban Environment



Rural Environment

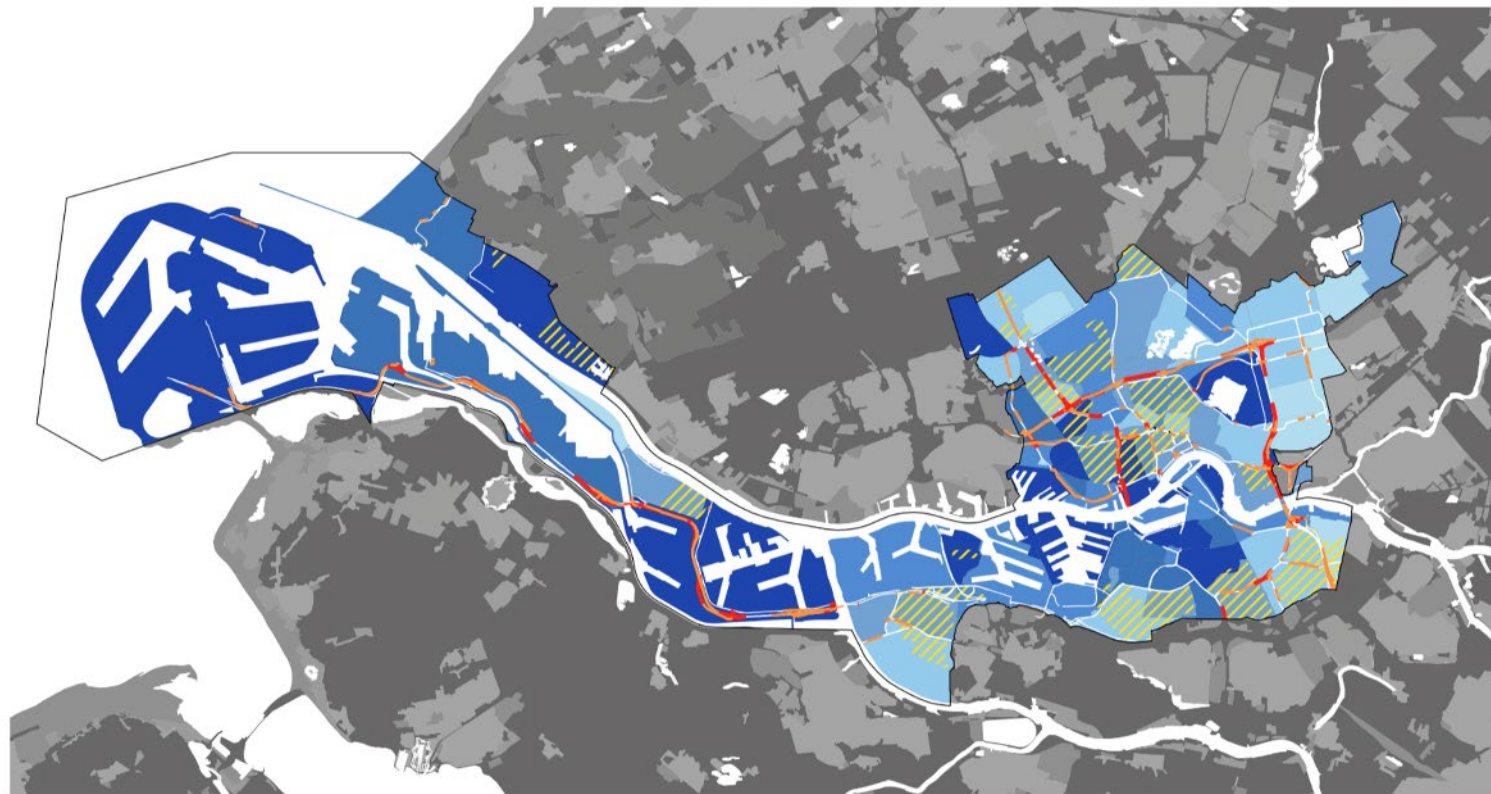
A woman with a backpack is riding a red bicycle on a wet city street. The street is reflective, showing the bicycle and the surrounding buildings. There are colorful circular overlays in shades of orange, pink, and yellow on the left side of the image. The background shows a modern building and bare trees, suggesting a winter or early spring setting.

Changing Climate



Yearly average temperature the Netherlands from 1901-2018 data from Berkeley Earth

Precipitation



% risicopanden per buurt

>25%

20-25%

15-20%

10-15%

5-10%

0-5%

kwetsbare hoofdwegen

onbegaanbaar

bereikbaar calamiteitenverkeer

wateropgave oppervlaktewater

2018





Temperature

Average temperature rises from 22.1 C to 23.5C in 2050.

Maximum day temperature rises from 36 to 39 C



Tropical nights

From 7 nights > 20 C to 3 weeks in 2050



Precipitation

Maximum daily total rises to 94 mm in 2050. More days with > 50mm



Drought

Precipitation deficit rises from 230mm to 288mm in 2050



Sea level

Sea level rises with 40cm in 2050 and 100m in 2100.





DEMOGRAPHICS



CLIMATE

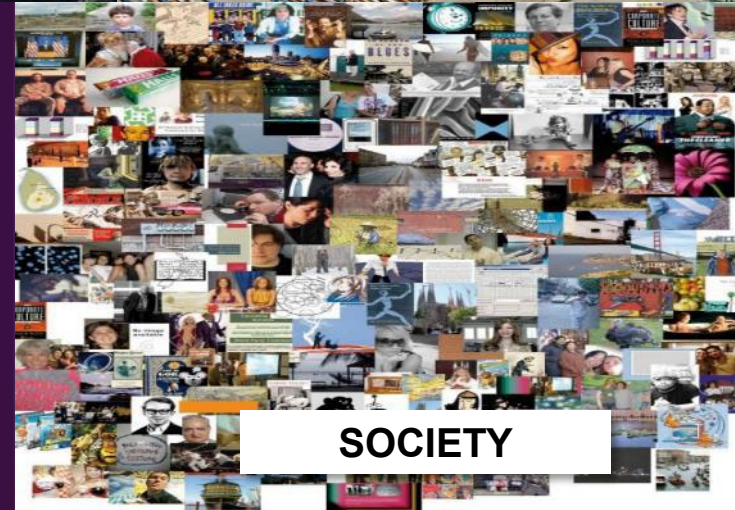


ECONOMY



TECHNOLOGY

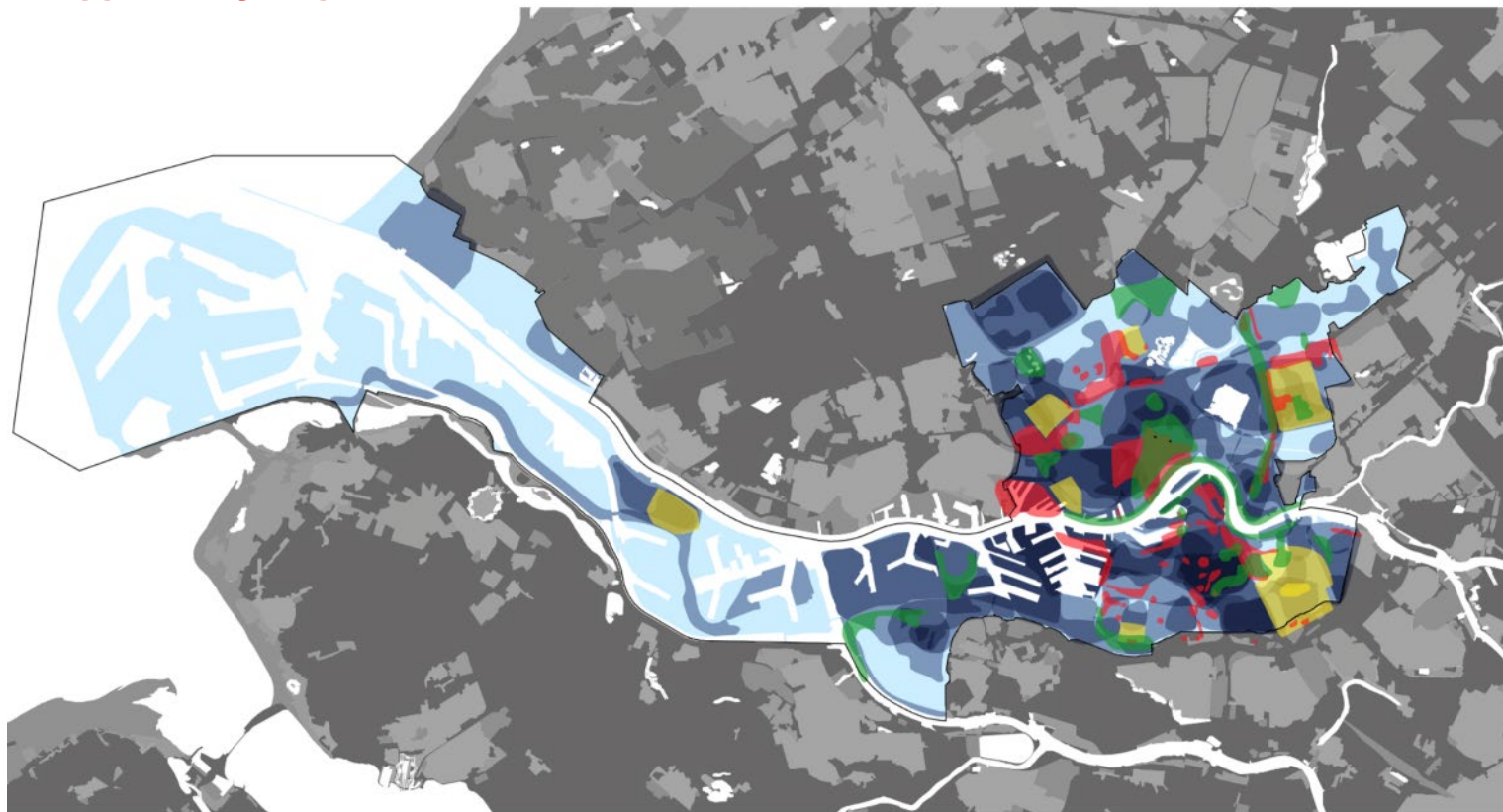
Welke **impact** heeft de 3e Industriële
Revolutie op uw bedrijf?



SOCIETY



Opportunity map



aantal klimaatthema's per gebied



1 tot 2



3 tot 4



meer dan 4

verknoping andere programma's



energietransitie



verdichting woningbouw



vergroening

A vibrant city park scene. In the foreground, a paved area features a water fountain with several small jets. People of various ages are playing and sitting around the fountain. In the middle ground, a large green lawn is filled with people sitting on blankets, some with umbrellas. In the background, there are several modern, multi-story buildings with grid-like window patterns. The sky is blue with light clouds. The image is overlaid with semi-transparent pink and orange circles. The text "The adaptive city" is written in white on a pink circle.

The adaptive city



Summary of Rotterdam Adaptation Strategy

2008 – 2018

Developing and experimenting phase

- Gaining knowledge
- Starting pilot projects
- Strategy development
- Linking in with citizens and other stakeholders



2019 – 2025

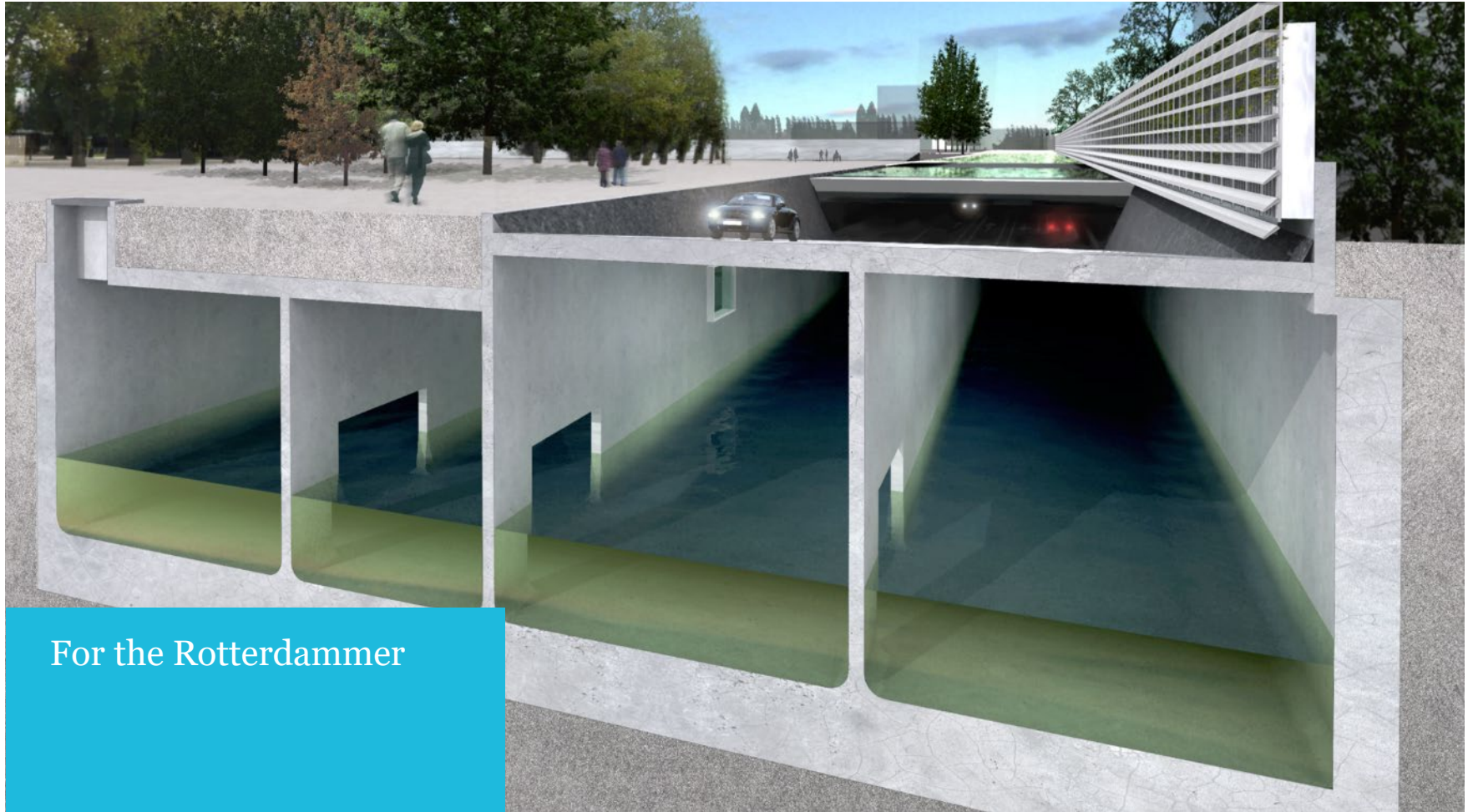
Upscaling and anchoring

- Starting city-wide approach
- Deepening knowledge base
- Integrating climate adaptation in specific policies and working processes
- Cooperate and finance on a city wide scale





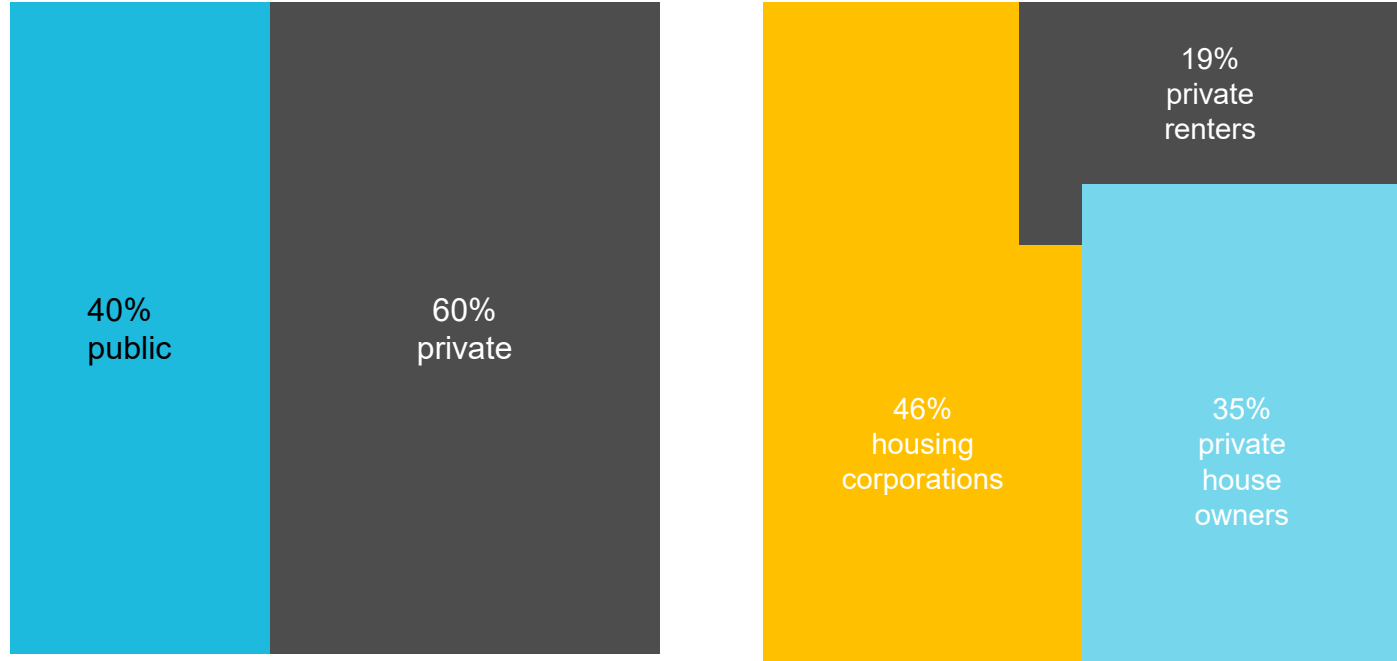
Examples



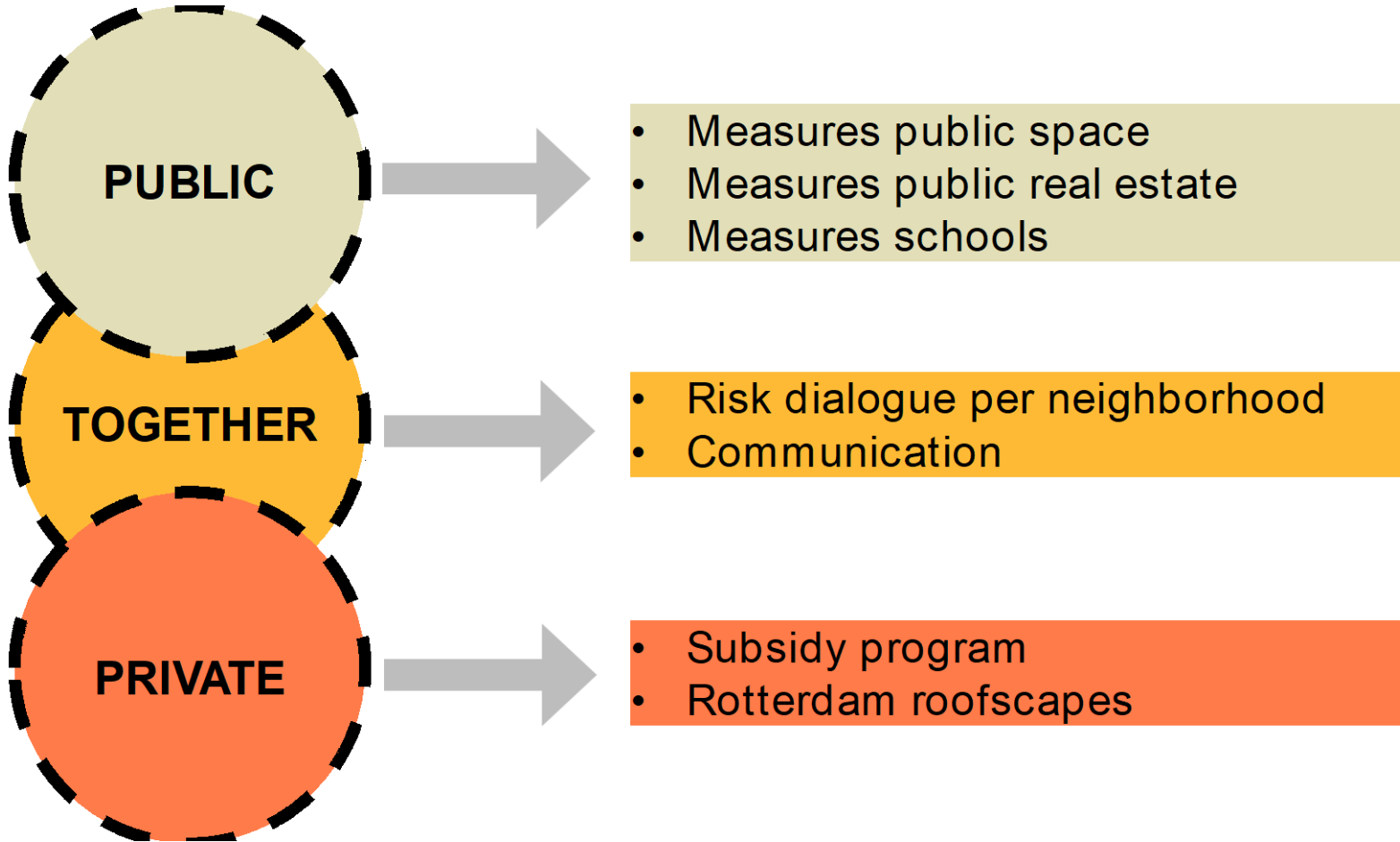
For the Rotterdammer

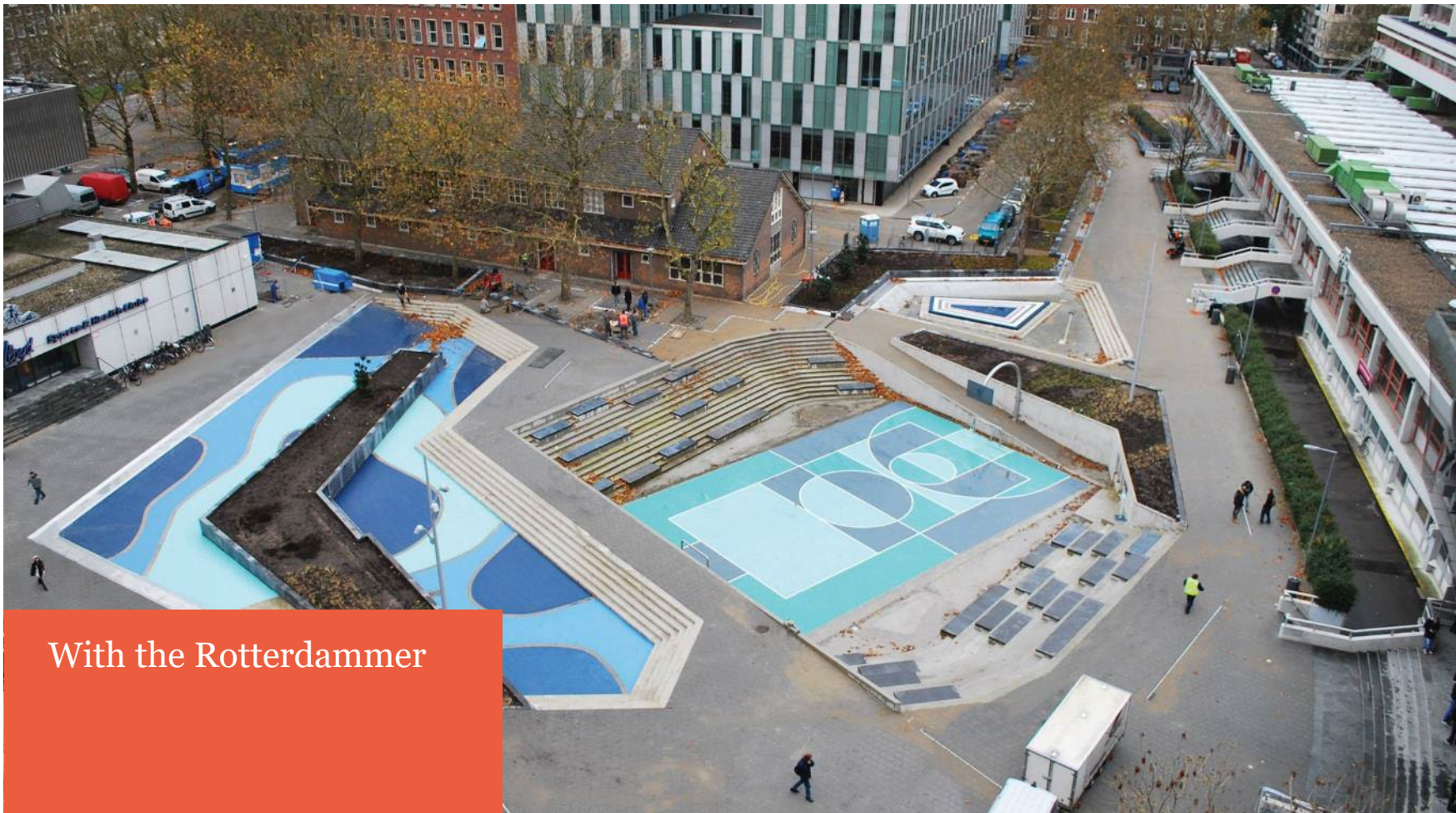


Challenge: public-private space ratio and ownership



Cooperation, creating incentives and making agreements is key

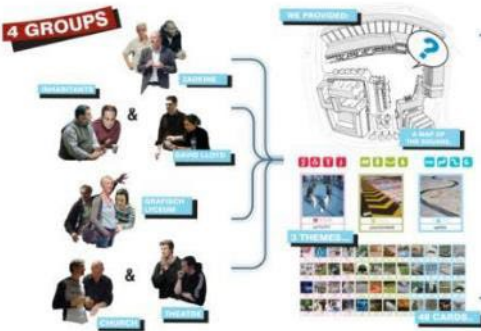




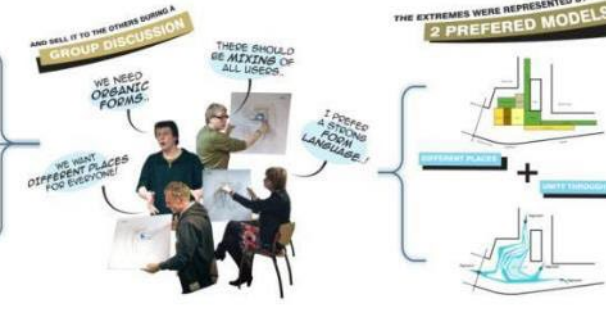
With the Rotterdammer



WORKSHOP 1



WORKSHOP 2



3



Designed by participation



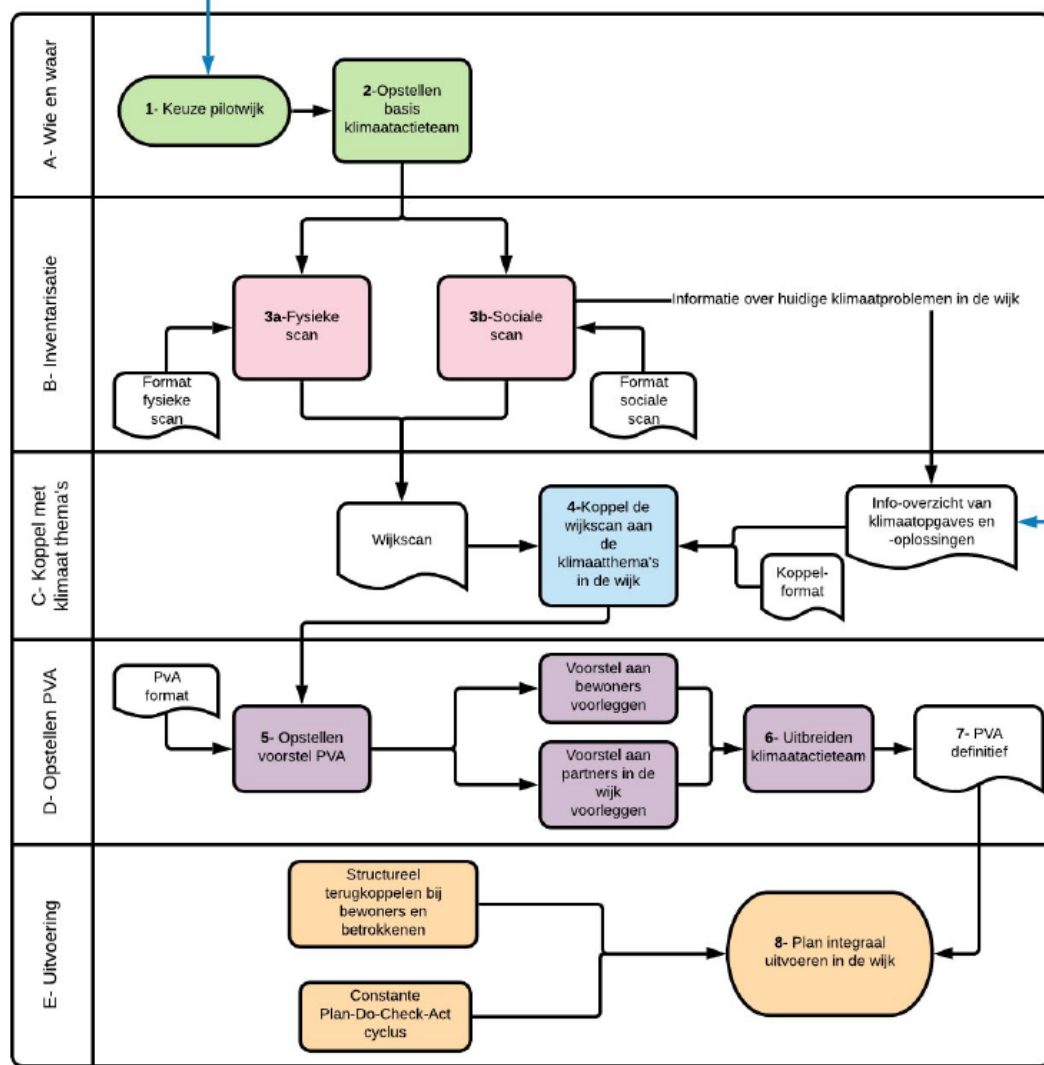
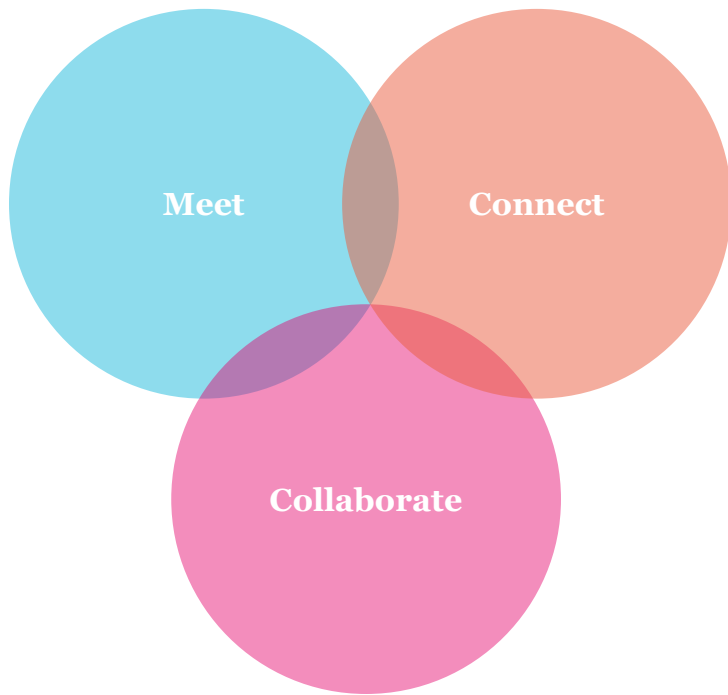




An aerial photograph of Rotterdam, Netherlands, taken at sunset. The city is illuminated by the warm, golden light of the setting sun, which is visible on the horizon. The city's architecture is a mix of modern skyscrapers and older buildings. A prominent feature is the Erasmus Bridge, a white cable-stayed bridge that spans the Nieuwe Waterweg canal. The canal is filled with water, and several boats are visible. The sky is a mix of orange, yellow, and blue, with some clouds. In the foreground, there are several large, semi-transparent circles in shades of orange, red, and green, which are part of a graphic design. The text 'Rotterdam Neighbourhood approach' is overlaid on the red circle.

Rotterdam Neighbourhood approach

The process



Stakeholders

“All people and organizations that have a connection with the neighbourhood, people that live, work, recreate in that area.”

- Citizens
- (Social) entrepreneurs
- Neighbourhood organizations
- Schools
- Social housing corporations
- Waterboard
- Local civil servants
- Other relevant partners

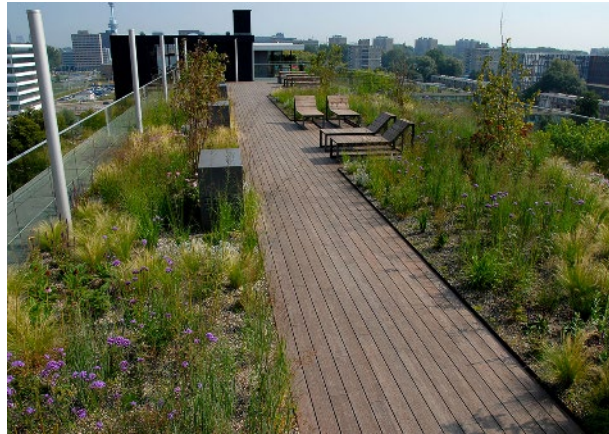


3 action tracks

Track 1
Low scale –
short period



Track 2
Street level –
Communities

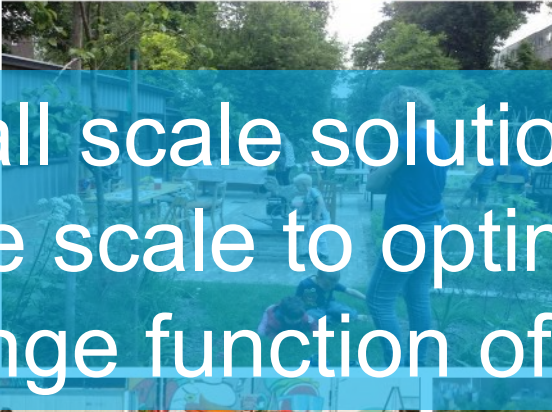


Track 3
Combination
with large
scale





Small scale solutions on a large scale to optimize the sponge function of the city



By the Rotterdammer



Social
And Physical



