

Investing in WASH to help SDGs



UCL

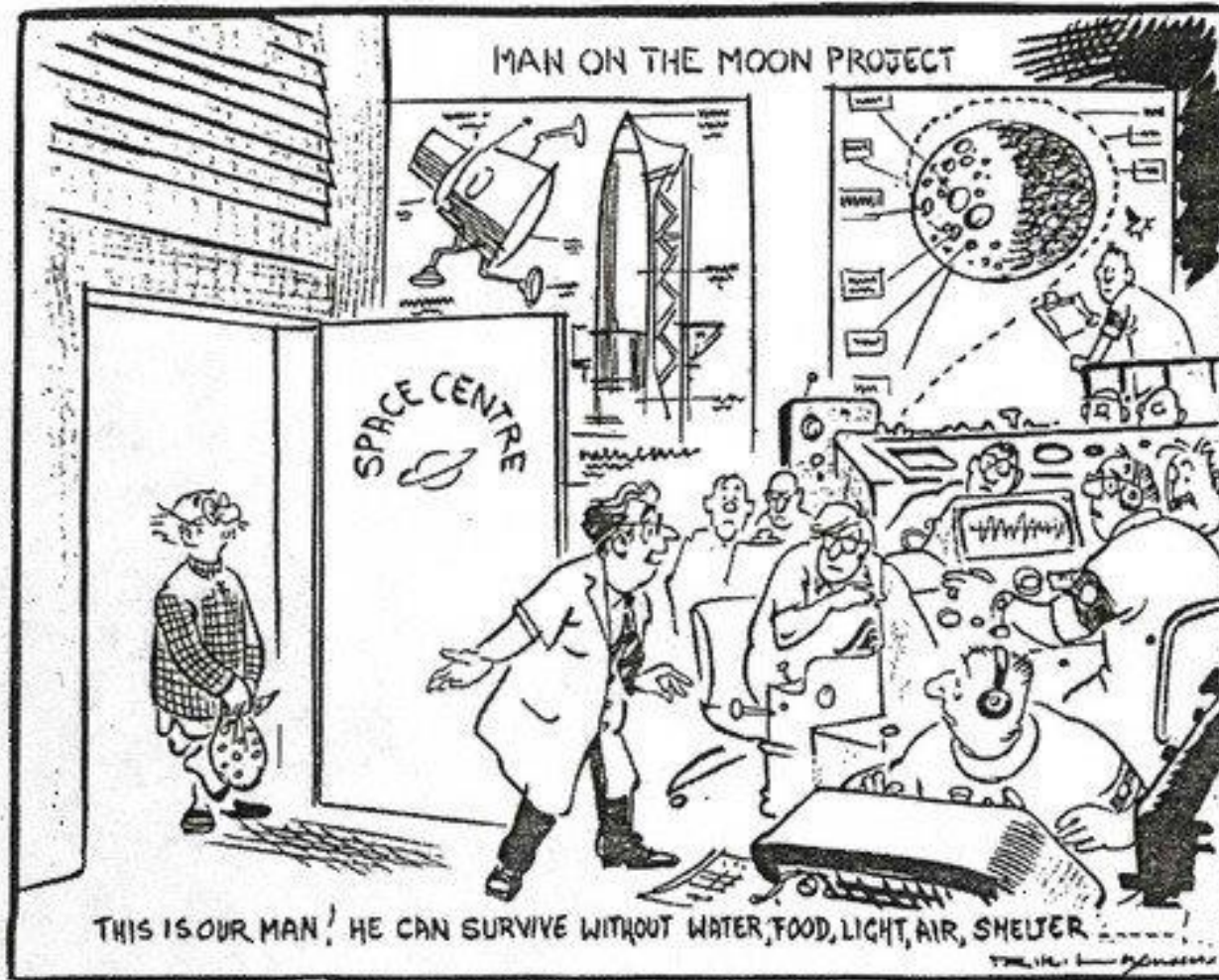
Access to **Drinking Water** Webinar Co-creation in **Africa** #SDG6



26 November 2020
14:00 – 17:00 (UTC+1)

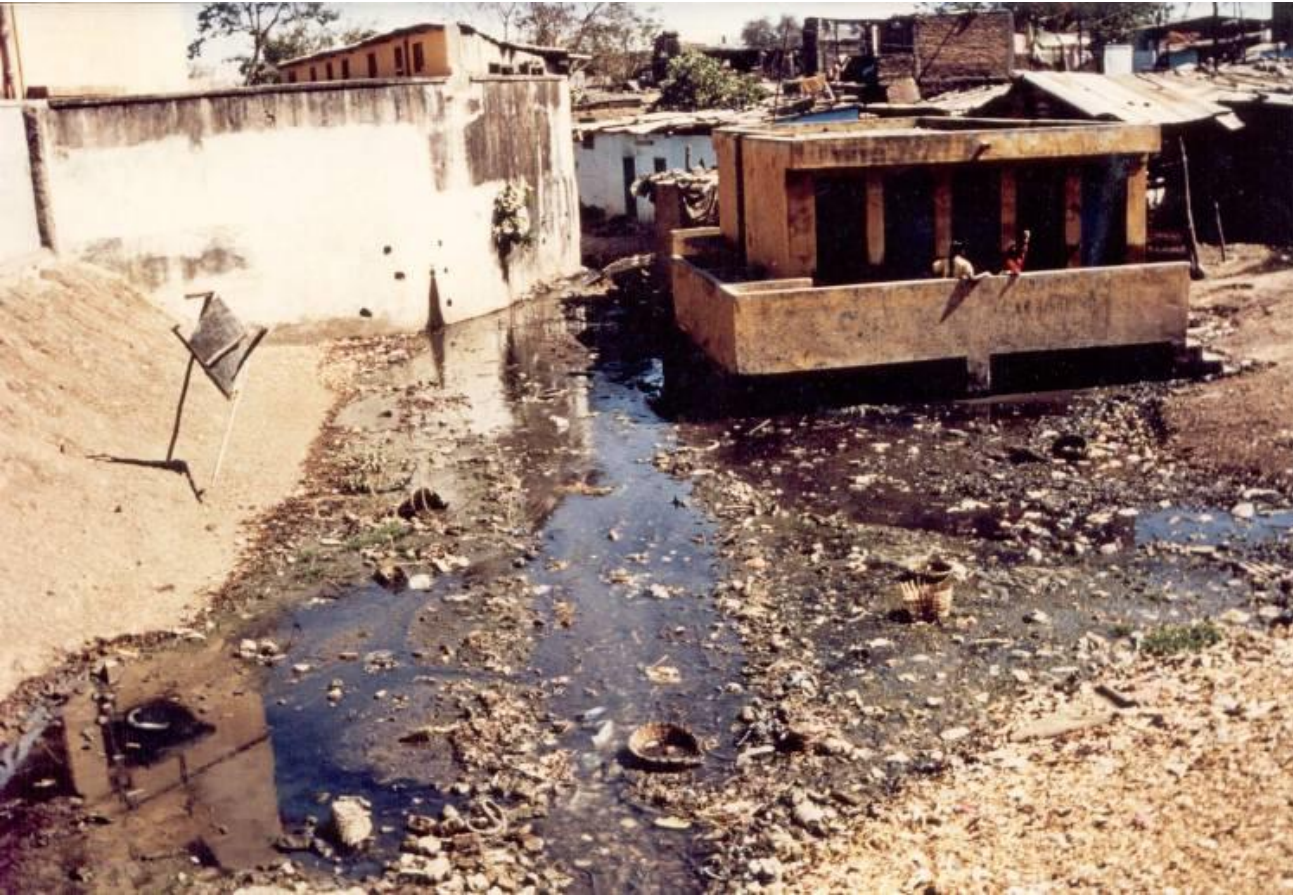


The common man



What gives you the impression that we are not? Of course we are an advanced nation—we will soon have TV, satellite ground station, space rocket, nuclear explosion...!

WASH SOLUTIONS OR PROBLEMS?



IN EUROPE, THE HIGHEST REDUCTIONS IN MORTALITY RATES WERE RECORDED LAST CENTURY WITH THE ADVENT OF SAFE WATER AND PIPED SEWERAGE.

ALL THE SUBSEQUENT ADVANCES IN SCIENCE AND MODERN MEDICINE PUT TOGETHER HAVE NOT MATCHED THIS.

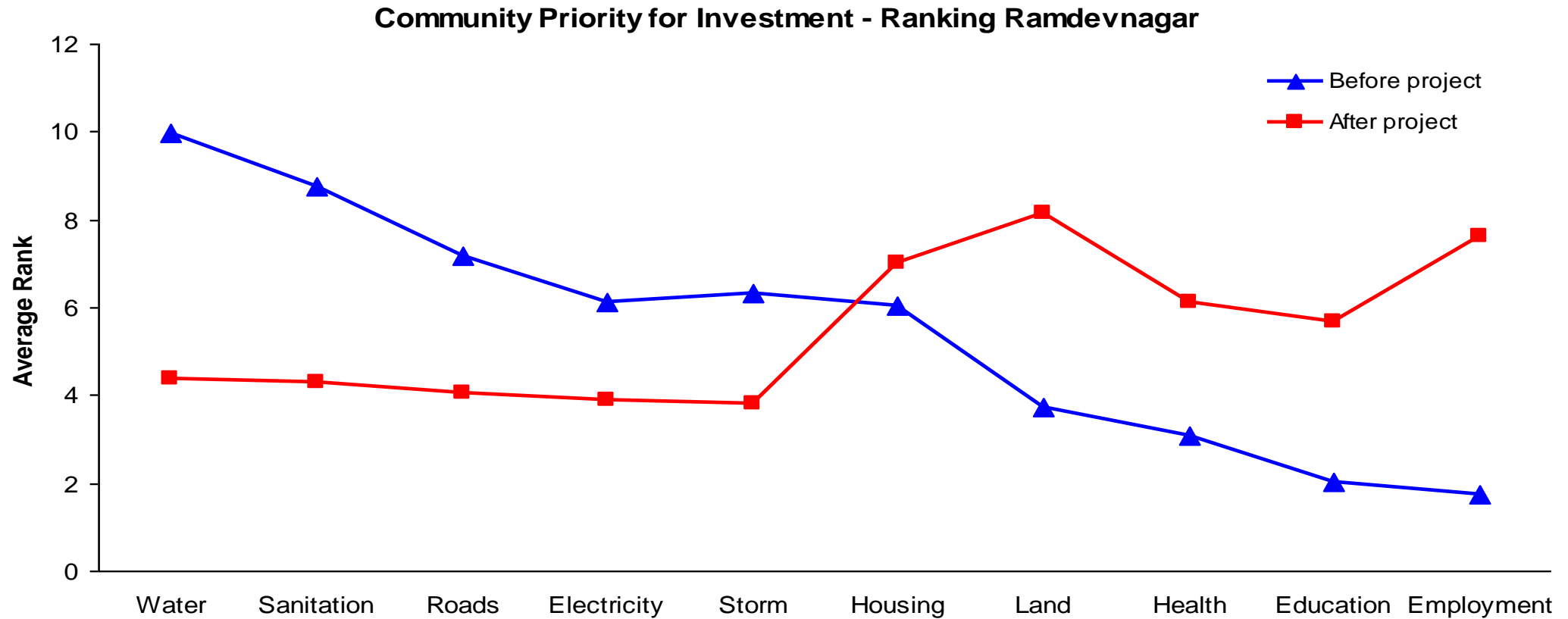
Provide physical infrastructure services through networks servicing individual households (water, sanitation, roads, electricity, rain water, solid waste).

In-situ upgrading with land tenure as a lease.

Use appropriate technologies, high quality data, nature sensitive designs, simplicity and frugality as an approach. This will reduce the gap between costs and affordability.

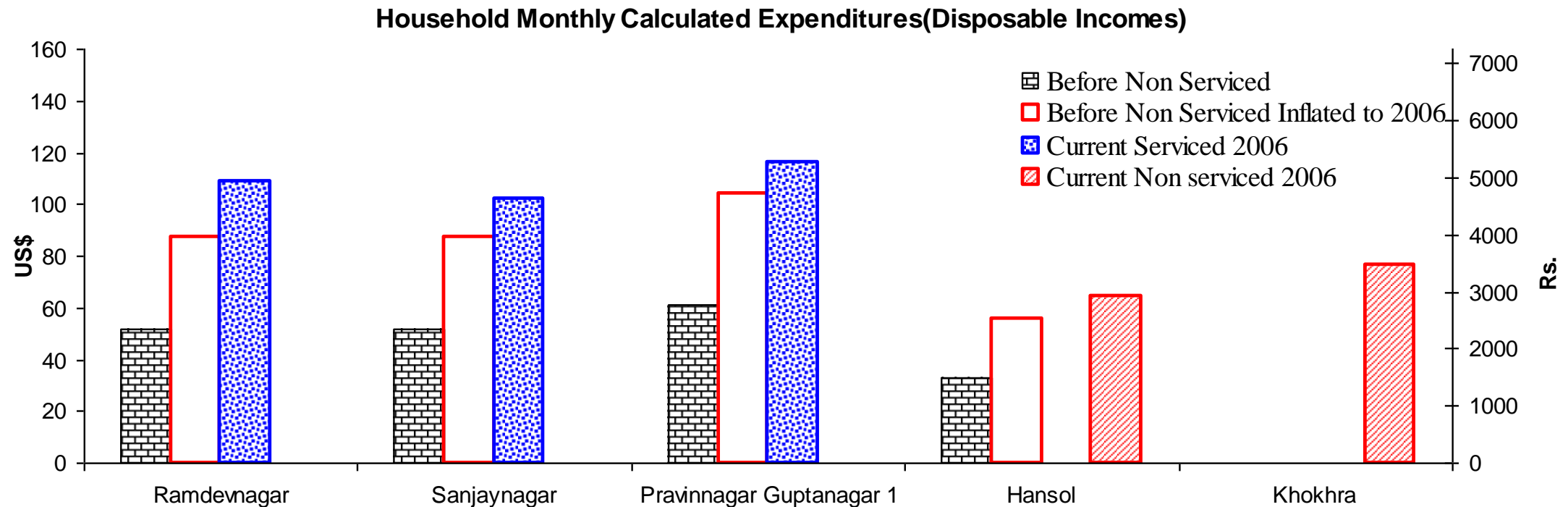
Get over the 'poverty syndrome' by making communities a financial partner. Meeting the huge resource needs through self-reliant partnerships and the untapped latent wealth of the community.

INFRASTRUCTURE CAN THEN ALLEVIATE POVERTY AND IMPROVE HEALTH, EDUCATION, INCOME AND HOUSING.



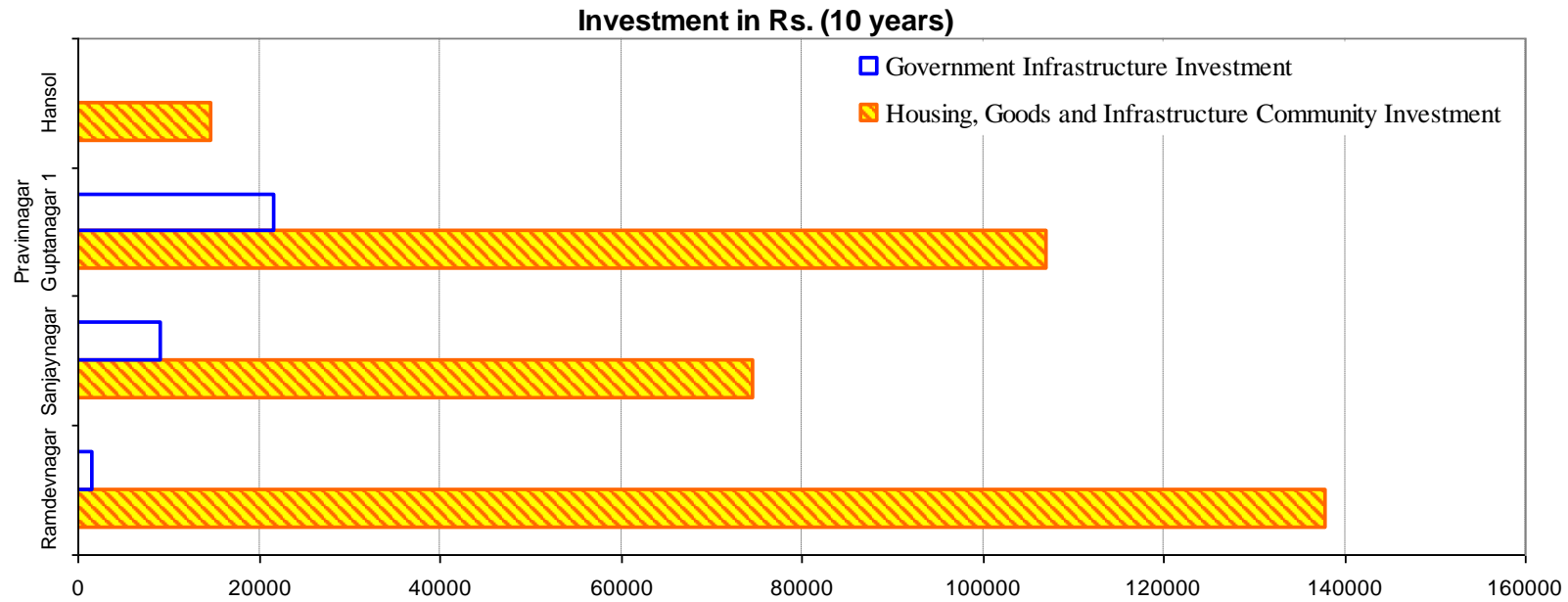
DISPOSABLE INCOME

Based on 500 household interviews in 5 Slums in Gujarat, India.



Water and Sanitation generates housing investment





Communal services



Household services



P Parikh, A McRobie, H Parikh (2012) The Role of Infrastructure in Improving Human Settlements, Urban Design and Planning, Volume 166, Issue 2.



ISULABANTU
COMMUNITY-LED
UPGRADING FOR
SELF-RELIANCE IN
SOUTH AFRICA

LEARN MORE AT:
WWW.ISULABANTU.ORG





Piesang River- more favourable landscape in contrast to Havelock.



Namibia Stop 8 settlement.



The challenging terrain in Havelock.



ISULABANTU
COMMUNITY-LED
UPGRADING FOR
SELF-RELIANCE IN
SOUTH AFRICA

LEARN MORE AT:
WWW.ISULABANTU.ORG



NAMIBIA STOP 8 AND PIESANG RIVER

- Reuse of grey water, rain water harvesting and other measures to optimise use of water for urban farming and address gaps due to erratic water supply
- Further clarity on water consumption and billing
- Incentives to further scale-up current ongoing farming initiatives
- Water, sanitation, education, solid waste and electricity identified as top priorities

HAVELOCK

- Improved solid waste management and cleaning of stream. This will also reduce flood risk.
- Improved sanitation facilities to consider safety
- Water, housing and electricity identified as the top three priorities
- Willingness to pay for household services (water for hot water baths and toilets)

OVERALL

- Integration of services and departments
- Community driven processes are sustainable
- Resilience in a multi-hazard and resource challenged setting
- Recycling and reuse of waste – circular economy



ISULABANTU
COMMUNITY-LED
UPGRADING FOR
SELF-RELIANCE IN
SOUTH AFRICA

LEARN MORE AT:
WWW.ISULABANTU.ORG



A FOCUS ON SANITATION

“...equitable sanitation and hygiene...”

“...for all”

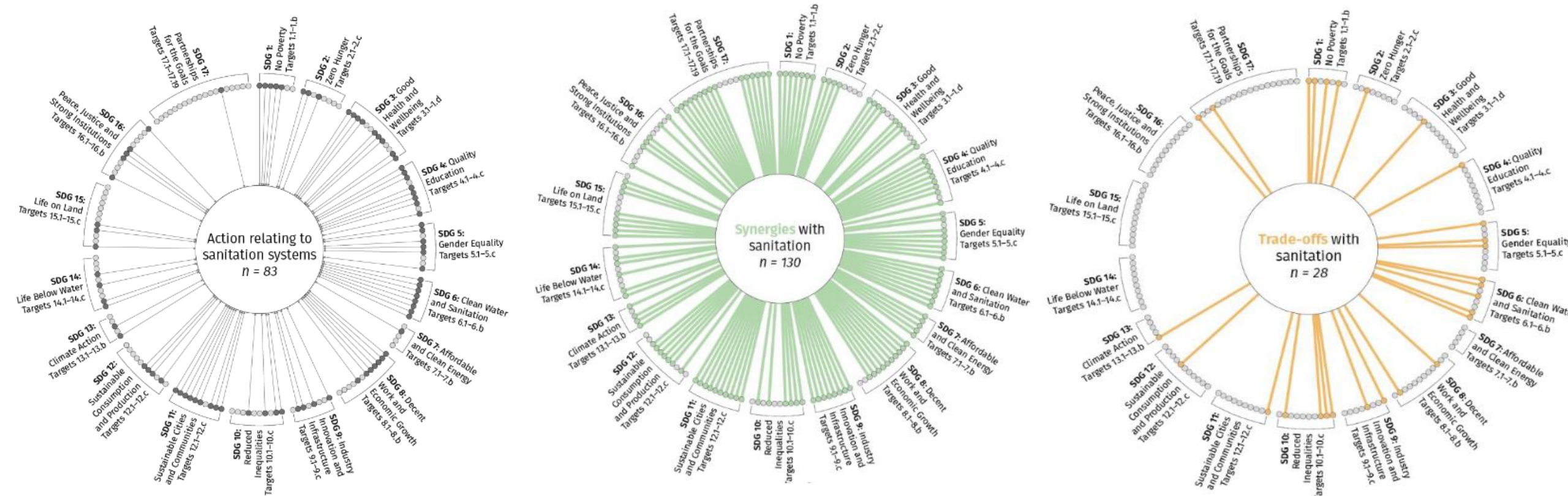
“...end open defecation”

“....needs of women and girls vulnerable people”

“... 'safely-managed' sanitation”

OVERVIEW

- Does the Target **call for action** in relation to sanitation?
- Are there **synergies** for achieving access to adequate, equitable and dignified sanitation and hygiene?
- Are there **trade-offs** for achieving access to adequate, equitable and dignified sanitation and hygiene?



Individual and collective aspirations of greater welfare and wellbeing

Environment and natural resources

Infrastructure services and innovation

Governance and partnerships for the SDGs

SYNERGIES

77%
of SDG
targets



Overlap
with **17**
SDGs



All Targets around

INCLUSIVITY

SOCIAL

DIVERSITY

HUMAN

WELLBEING

Safeguarding water systems through treatment and disposal

Human waste/wastewater for agricultural production



The waste and energy nexus



Safeguard ecosystems and support livelihoods

Faecal-oral disease reduction

Integrated climate action and environmental contamination

TRADE-OFFS

17%
of SDG
targets



More
SYNERGIES
than
TRADE-OFFS



**Barriers to inclusive
interventions**

SCALE OF ACTION

**CONTEXTUAL
CONCERNS**

**POLICY
IMPLEMENTATION**

*Cost and household
affordability*



*Invasive species as
non-native species
may be introduced*



*Promotion of water-
intensive systems*

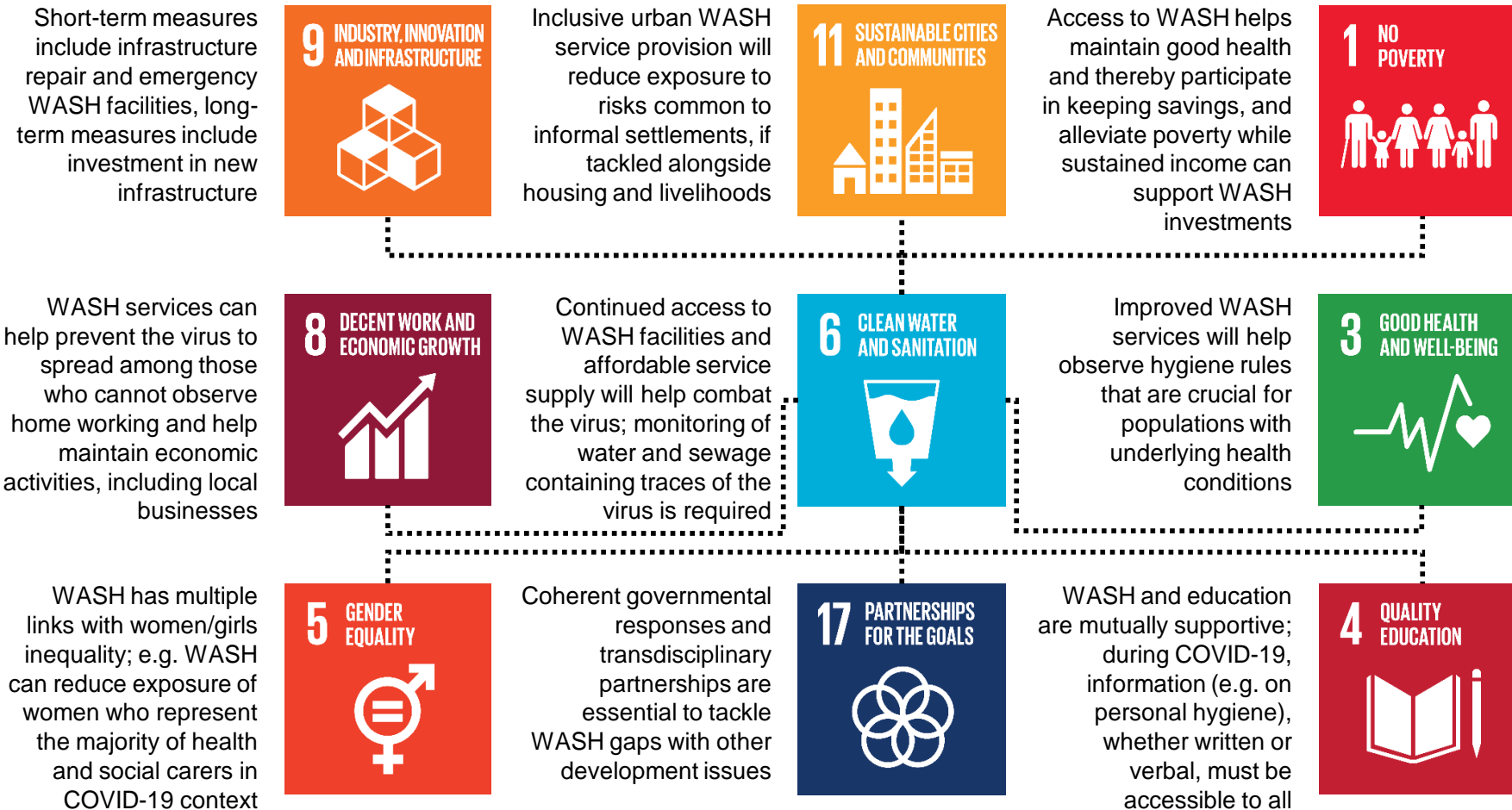
*Mismatch between
international
development
community and local
aspirations*

*Government
taxes*



Hygiene education

- Study identified **linkages between sanitation and all 17 SDGs**
- **Synergies** across multiple levels - individual, household, community, society and environment.
- Delivery of safe sanitation to **improves access** to infrastructure, but also **delivers benefits in other sectors** (health, education).
- Results demonstrate **interconnected and far-reaching benefits** from investments in sanitation.
- From **high-level to more focused investigations**





- ❖ Harmonise investment and actions in WASH
- ❖ Interdisciplinary evidence-driven approaches
- ❖ Context specific case studies
- ❖ Integrated projects
(e.g. water-energy-food security nexus)
- ❖ Cross-sectoral collaborations, nodal agencies

THANK YOU