

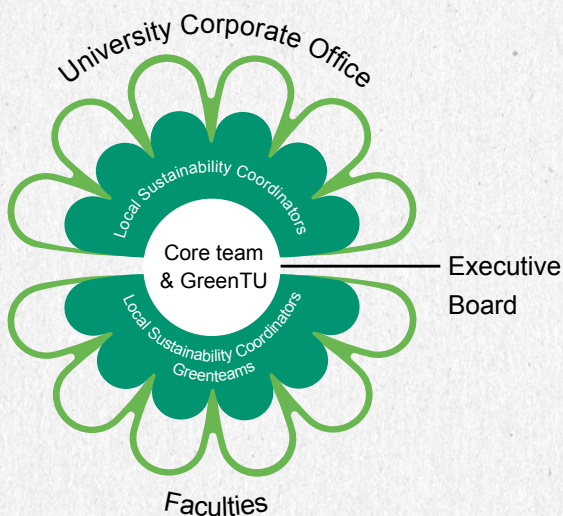
Sustainable TU Delft

All general developments

Background:

In November 2022, TU Delft announced its intention to invest heavily - to the tune of 100 million euros - in making its campus sustainable. During the next few years, action will be taken on a step by step basis towards the creation of a carbon neutral, circular, and climate-adaptive campus, with a focus on improving biodiversity and the quality of life.

Facilitating innovation is a part of the sustainability ambition. With innovation the university helps to face the challenges that the government bodies and other organisations are struggling to meet. The TU Delft Campus will be a testing ground for innovations.



Governance

The organization of the Sustainability Project is structured like a flower with petals. The centre is formed by a core team. This core team touches all faculties, University Corporate Offices and students at TU Delft. Theme Teams have been formed to focus on specific topics of the sustainable transition. At every faculty and University Corporate Office there is a Local Sustainability Coordinator. They work on an action plan to make their faculty/ University Service more sustainable.



Reporting

By monitoring, the university gains insight in the carbon emissions on and from the campus. TU Delft reports annually on scope 1, scope 2, scope 3. Scope 1 for direct emissions, scope 2 for indirect emissions/bought energy and scope 3 for indirect emissions in the supply/value chain. Based on these reports, necessary action is taken.

Education

Based on research, the university works towards the integration of sustainability themes within the existing courses. By doing so, the university educates the engineer of the future.



Communication and social engagement

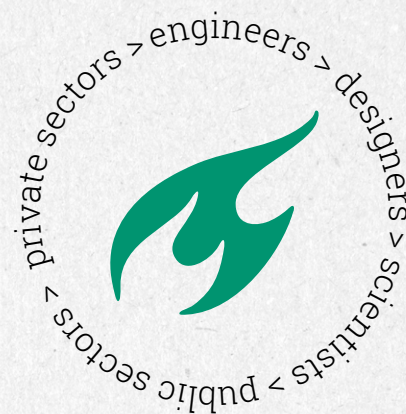
TU Delft develops relevant knowledge for society. In this, the university sets an example on responsible behavior and sustainable business practices. By focusing on a community that knows, feels, and lives up to its sustainability ambitions, everyone can participate. Therefore the university inspires and motivates the TU Delft community by organizing events and activities. Here are some of the activities are organized: Plant a tree day, National Biodiversity Day, Waste Free Week, Climate Drinks, Biodiversity Tours, and lots of workshops and presentations for students on campus.



TU Delft will also be concentrating on all the various aspects that affect the climate and the environment, such as buildings, energy systems, purchasing, waste management, mobility, and food.

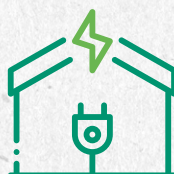
Campus as a Living Lab

The TU Delft Campus will be available as a testing ground for innovations in the fields of sustainability. Experiments will be carried out throughout the campus involving new and sustainable techniques and processes. This will bring together the expertise of our engineers, designers, scientists, and the public and private sectors. Some of the projects being tested include: The Green Village, heating storage, geothermal well, Digital Twin Energy, and the Digital Twin Transport.



Energy systems

TU Delft works towards an emissions-free energy system on the campus, delivered by sustainable sources. Among other things, this includes geothermal energy, solar panels, energy storage through new types of batteries and a heat/cold storage.



Construction & Renovation

Energy consumption at the campus is after procurement the second-largest factor in TU Delft's carbon emissions. This energy is used primarily, directly or indirectly, in the buildings. These should be carbon neutral and circular by 2030. TU Delft will reduce the energy demand. This can be achieved through smart management of buildings, changes to user habits, energy renovations and new energy-positive designs.

Campus facilities



TU Delft works towards sustainable amenities on campus. This includes healthy and varied, local, seasonal, organic food and beverages and less animal and plant-based products in all food venues. The caterer offers food based on the scientific EAT-Lancet diet.



Procurement (collective purchasing of goods) and waste management is the largest contributor to emissions at TU Delft. The university works towards making the procurement supply chain circular. Avoidance of procurement is best, but when new materials or products are required, only sustainably sourced products will be contracted.



Everyone who works or studies at TU Delft uses ICT, AI and data in different ways, and likely more in the future. TU Delft's digital strategy aims to realise hybrid education. This involves digitising administrative processes. This contributes to reducing carbon emissions.



EcoCampus

The university keeps improving a natural, biodiverse campus where people and nature co-exist. Every project on campus must contribute to biodiversity, along with becoming climate-adaptive.



Mobility

We want to create a campus that is both easy and safe to reach – now and in the future: a green, park-like environment that can be explored on foot and is carbon neutral. A place where we use the limited space intelligently and where we stimulate and facilitate the use of sustainable transport.