



“Moving towards a sustainable future together”

App. 200 million turnover

App. 325 Employees

New buildings / renovation

Industrialisation since 2014

Robotisation since 2016

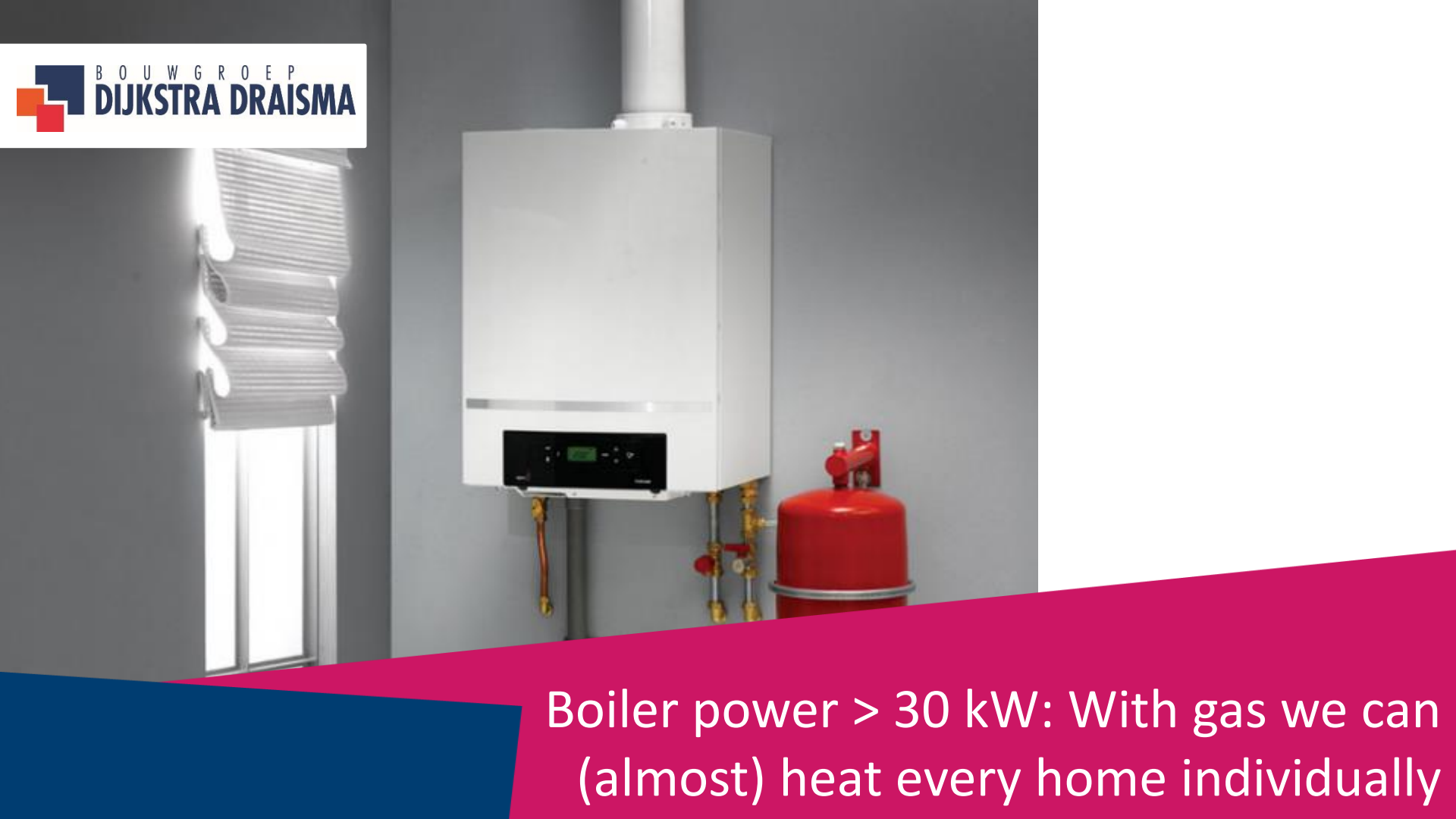


The challenge!
Typology, affordability, technology.



But most importance
SOCIAL ACCEPTANCE





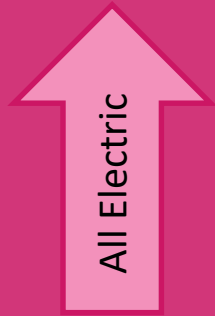
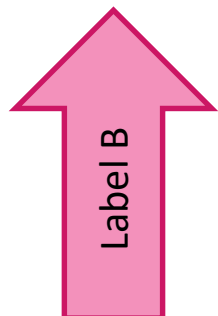
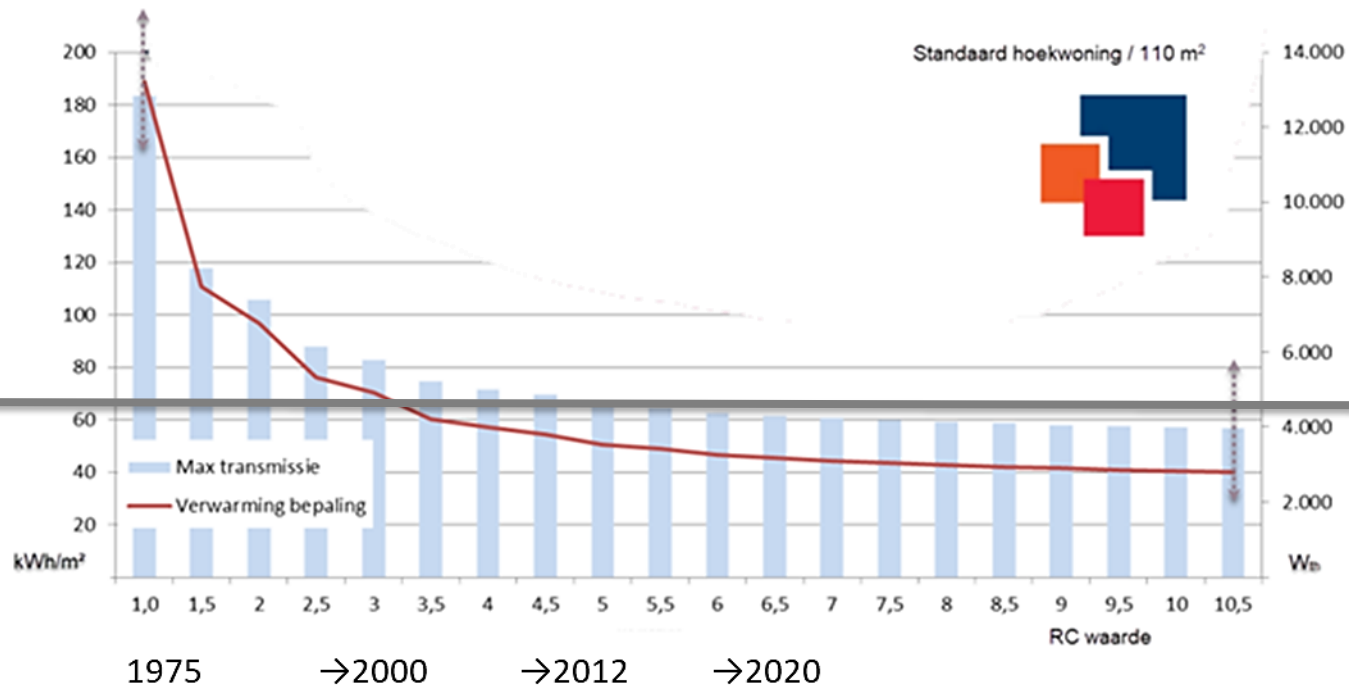
Boiler power > 30 kW: With gas we can (almost) heat every home individually

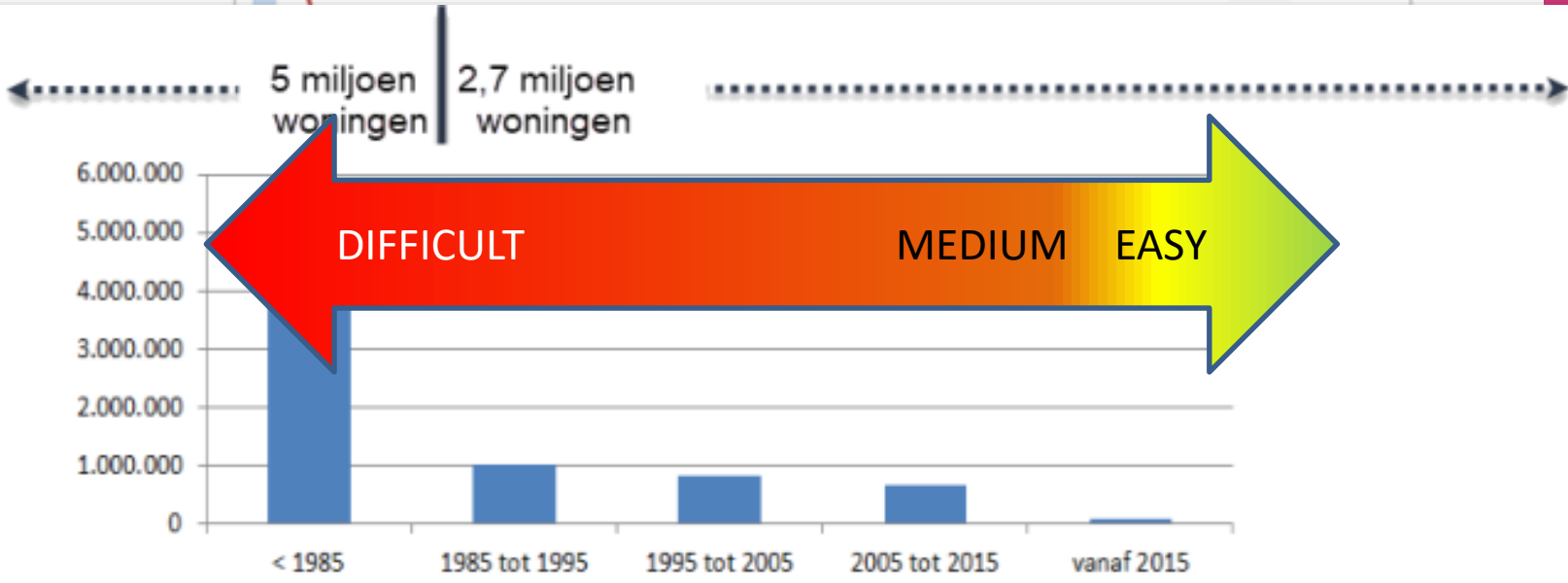
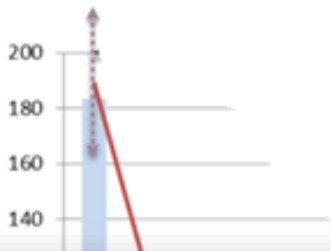
*The energy transition is a challenge for **buildings**, **infrastructure** and the **production of energy**, but above all it is a **social challenge**.*

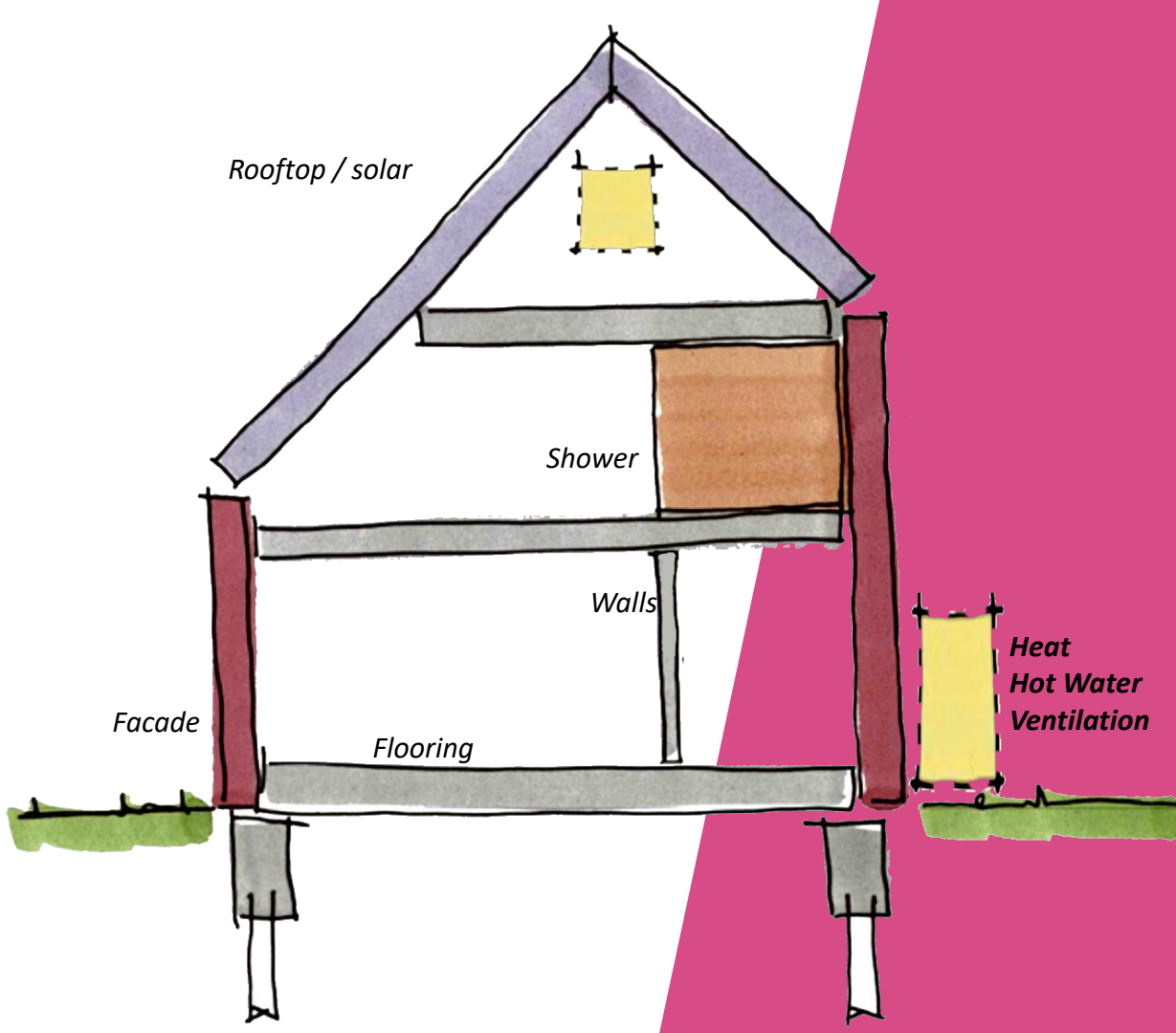
**Extra investment of
€150-250 billion until
2050 + 20-25%**



Most common
heatpump

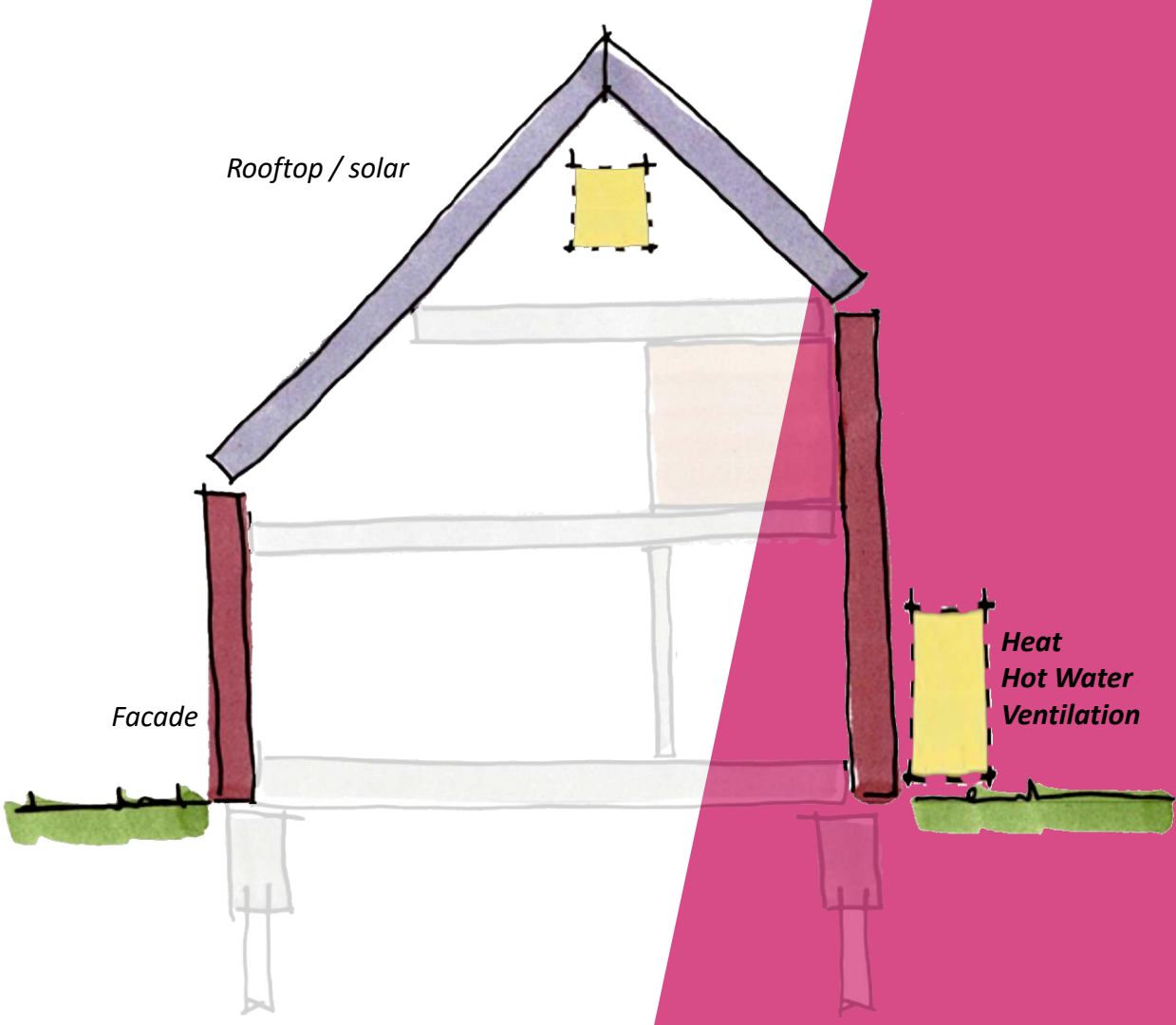






We started to slice buildings into modular pieces

For volume we need several markets (PMC)



Rooftop / solar

Facade

*Heat
Hot Water
Ventilation*

**We started to
slice buildings into
modular pieces**

- RENOVATION -

Gas:

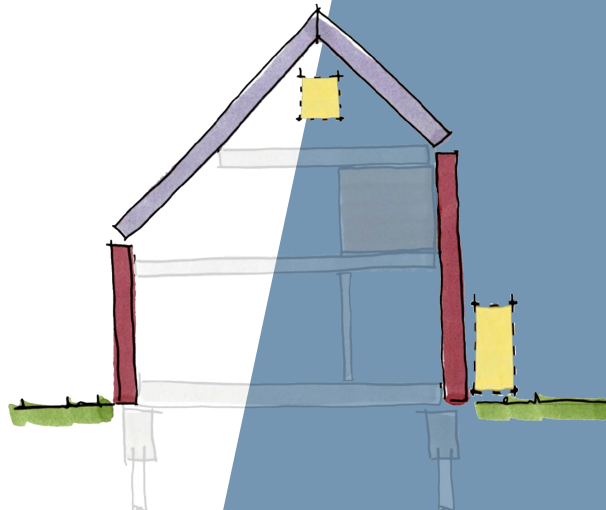
Low insulation
Natural ventilation
High temperature
Comfort ✓

Excess heat / Geothermal

Low or high insulation
All types of ventilation
Low or high temperature
Comfort ✓

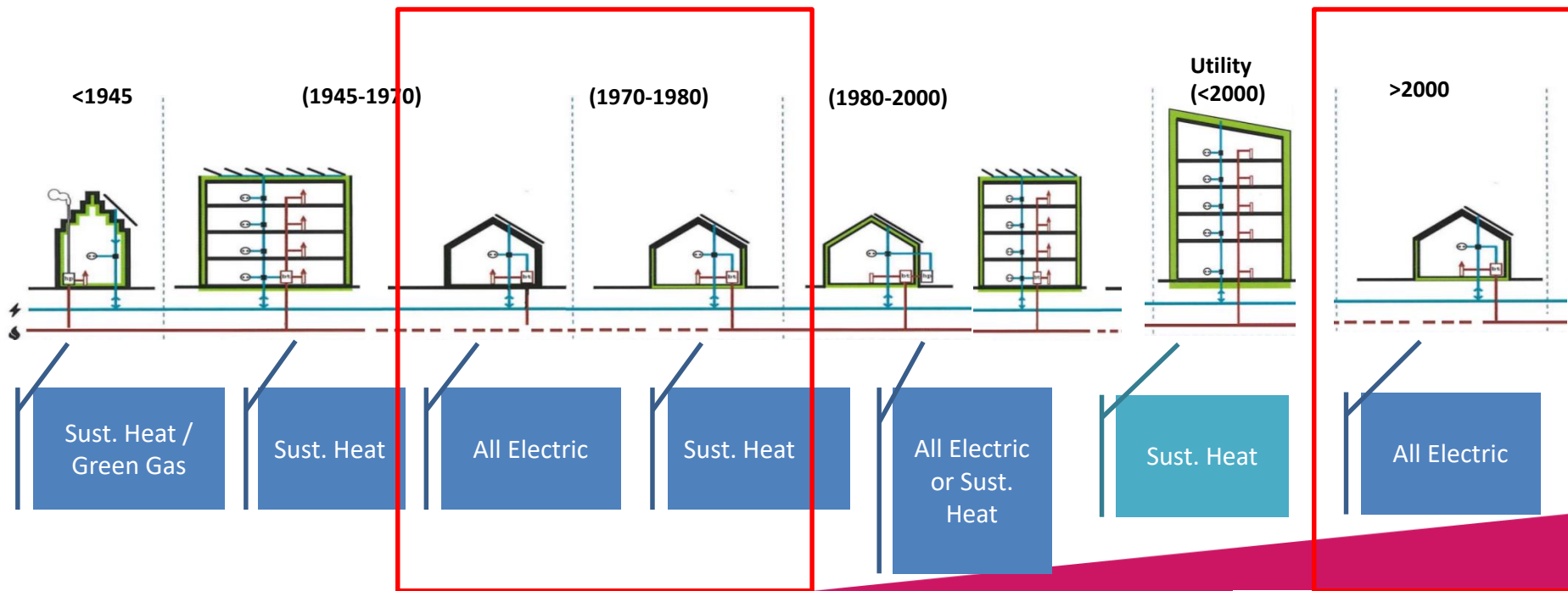
All Electric:

~~Low insulation~~
~~Natural ventilation~~
High temperature
Comfort
Insulation: RC >4,5
Ventilation with heat recovery
Low temperature
Comfort ✓



industrialisation

industrialisation

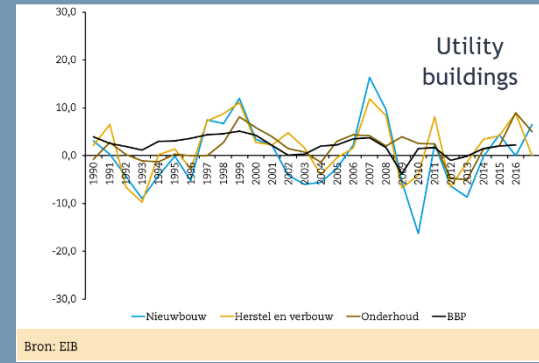
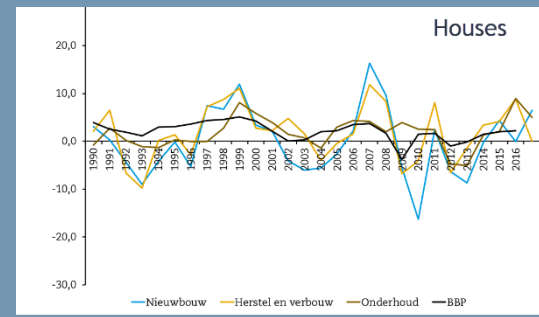
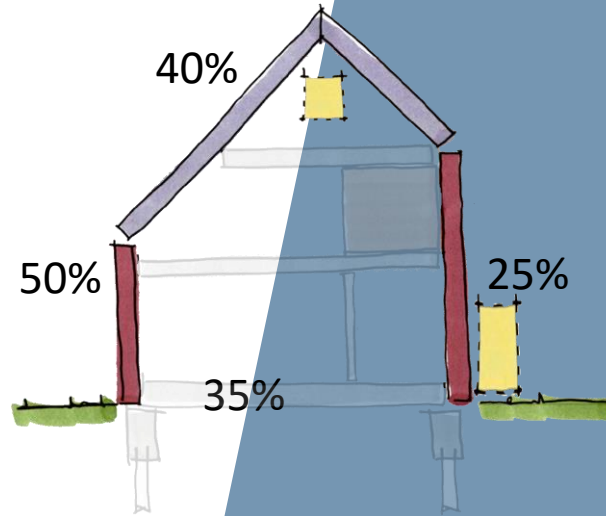


TYPES



Focus: insulation systems for All Electric

% of labour “normal way of thinking”



Bron: EIB

Volatile job market:
return after crisis <12%

From: → PREFAB → INDUSTRIALISATION → ROBOTISATION

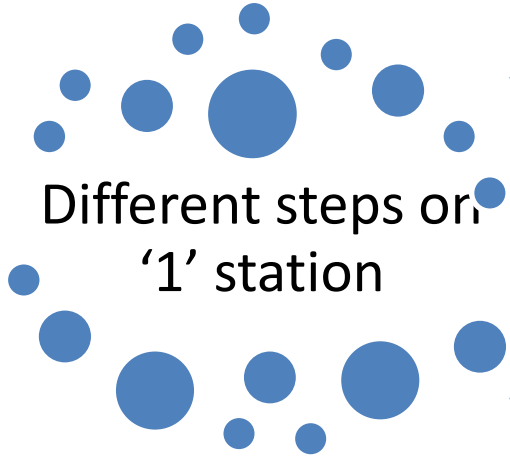


1.000 gebouwen per dag?



From linear
driven IT to
integrated
driven IT and
selected
copartners

Fly to Factory



From

To

And



Assembly



Assembly



Assembly



It is a
challenge
we have
to confront
together

