



## UPCOMING DEFENSES

**DEC 14**

**DEFENSE SARVESH KOLEKAR**  
*Driver's Risk Field. A Step Towards a Unified Driver Model*

10:00

**DEC 15**

**DEFENSE WILLEM HOGENDOORN**  
*Suspension Dynamics In Transitional Pipe Flow*

10:00

**DEC 16**

**DEFENSE CARMEN KOIJ**  
*Towards unmanned ships. A task based analysis to identify economically viable low manned ship concepts*

10:00

**DEC 16**

**DEFENSE JIA FU**  
*On the powder metallurgy, additive manufacturing and welding of oxide dispersion strengthened*

12:30

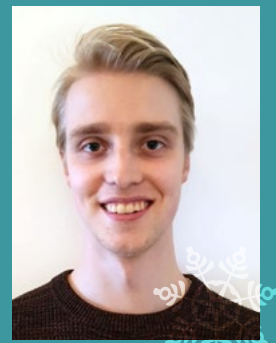
## UPCOMING EVENTS

**JAN 00**

**NEW YEAR'S EVENT**  
Depending on Covid regulations... Stay tuned for updates!

## LET'S INTRODUCE:

Hi! My name is Robin and I started my PhD back in February of this year in the BME department. The topic of my research is needle channel planning for patient-tailored cervical cancer brachytherapy applicators. This research is part of the ARCHITECT-project, which is a collaboration between the TU Delft and the Erasmus MC, and aims to improve dose conformity. I recently joined the PhD Council and will be managing communication between the council, the PhD community and others. If you have any questions, do not hesitate to contact me or pass by the MISIT-lab! Hope to see you soon!



## CHRISTMAS EVENT UPDATE

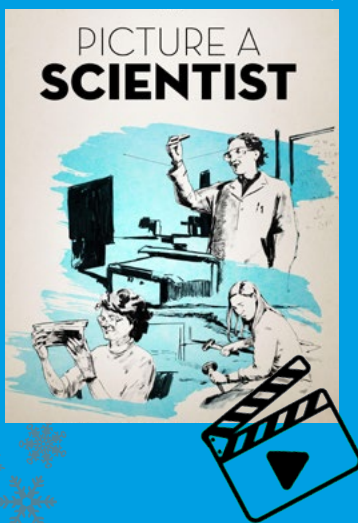
Due to the current stricter Covid policy, sadly, the planned Christmas event cannot take place. But stay tuned, because as soon as it is possible again, we will organise a get together! Maybe not in Christmas jumper, but we will meet again. Stay healthy and see you in 2022!



# HAPPY HOLIDAYS

## ROUND TABLE DISCUSSION GENDER & INCLUSIVITY

On Thursday, the 25th of November at 4 pm, we organized our last (online) round table discussion of 2021. The topic was the ever-relevant one of gender in academia, and the speaker was Francesca Grazian, a PhD from EEMCS, and member of that faculty's Diversity and Inclusion team. The event was attended by around 15 PhDs from the 3mE faculty. In her talk, Francesca presented statistics relevant to 3mE and TU Delft as a whole that highlighted the differences between men and women at different levels in academia. She also elaborated on the ways that women are disadvantaged/sidelined in the workplace and how often this happens in seemingly innocuous ways that are actually micro-aggressions. She urged the attendees to be aware of these commonplace situations and to actively check their own behavior and the behavior of their peers in order to combat them. Francesca also presented findings from research that corroborated the points in her presentation, showing that there were patterns in the conditions of women in academia across the world. Her talk was well-received by the audience and an intense discussion ensued, with most attendees largely agreeing on the points Francesca made. Many attendees had also already seen the movie associated with the talk, "Picture A Scientist", which recounts the experiences of female academics, and which is available to watch free for TU Delft employees by following [this link](#), when logged into the TU Delft VPN. We encourage you also to go check it out and hope you will tune in to our future round table discussions in 2022, where we will continue to cover pressing issues related to academia, as always!



## STATISTICAL HELPDESK

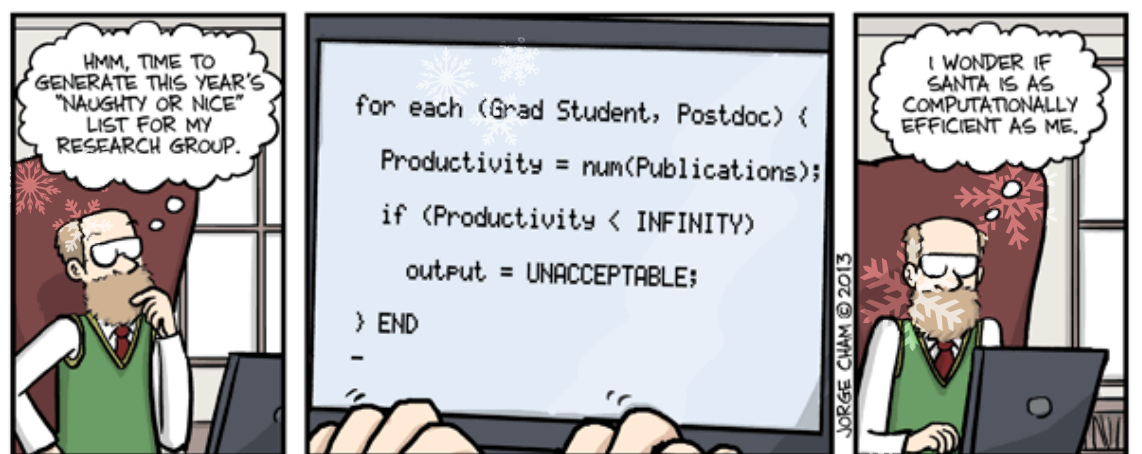
Statistics and statistical modeling plays an important part with a lot of the research done at the TU Delft. Especially for this kind of cutting edge research, classical statistical methods, like the ones taught to our students in the introductory course Statistics, often do not suffice anymore. With modern, computing intensive methods, it is possible to use less restrictive models and techniques tailored to your problem to get more relevant information from your data. The [Statistical Helpdesk](#) was started to offer you these methods for your problems!

Who can use this Helpdesk?

All researchers from the TU Delft can use this helpdesk. Your request for assistance will be assessed on the basis of availability of one of our group members and compatibility of the question with our expertise. Master students working on their final thesis, can use this Helpdesk via their supervisor. The meeting will be arranged with the supervisor and the MSc student can join. It is often advisable to think about which statistical methods you would want to use already at the design of an experiment (before gathering the data).

How does it work?

Fill out the form "[Statistical Helpdesk](#)", containing a short description of your research and your problem, and plan a first meeting!



WWW.PHDCOMICS.COM

## A WARM WELCOME TO...

Serafim Korovin  
Suryanarayanan Sanu

**DCSC**

Pieter van Altena  
Chao Song

**PME**

Anton Kooijmans

**BME**

Sowmya Kumar

**PE**

Jiaxiang Yi

**MSE**

Lasse Peters

**COR**

...AS NEW MEMBERS OF OUR 3ME PHD COMMUNITY!

## CONSULTATION HOURS GRADUATESCHOOL

If you have any doubts about your PhD trajectory, the number of GS courses you still need to do or the credits you can receive for an online course, Mascha Toppenberg from Graduate School is available for online consultation, every Wednesday from 13.00 till 14.00.

You can reach her via standard Skype: [graduateschool-3me](#).

or via Skype for Business: [m.p.i.toppenberg@tudelft.nl](mailto:m.p.i.toppenberg@tudelft.nl).



LET'S STAY IN TOUCH

[WEBSITE](#) [EMAIL](#) [INSTAGRAM](#)